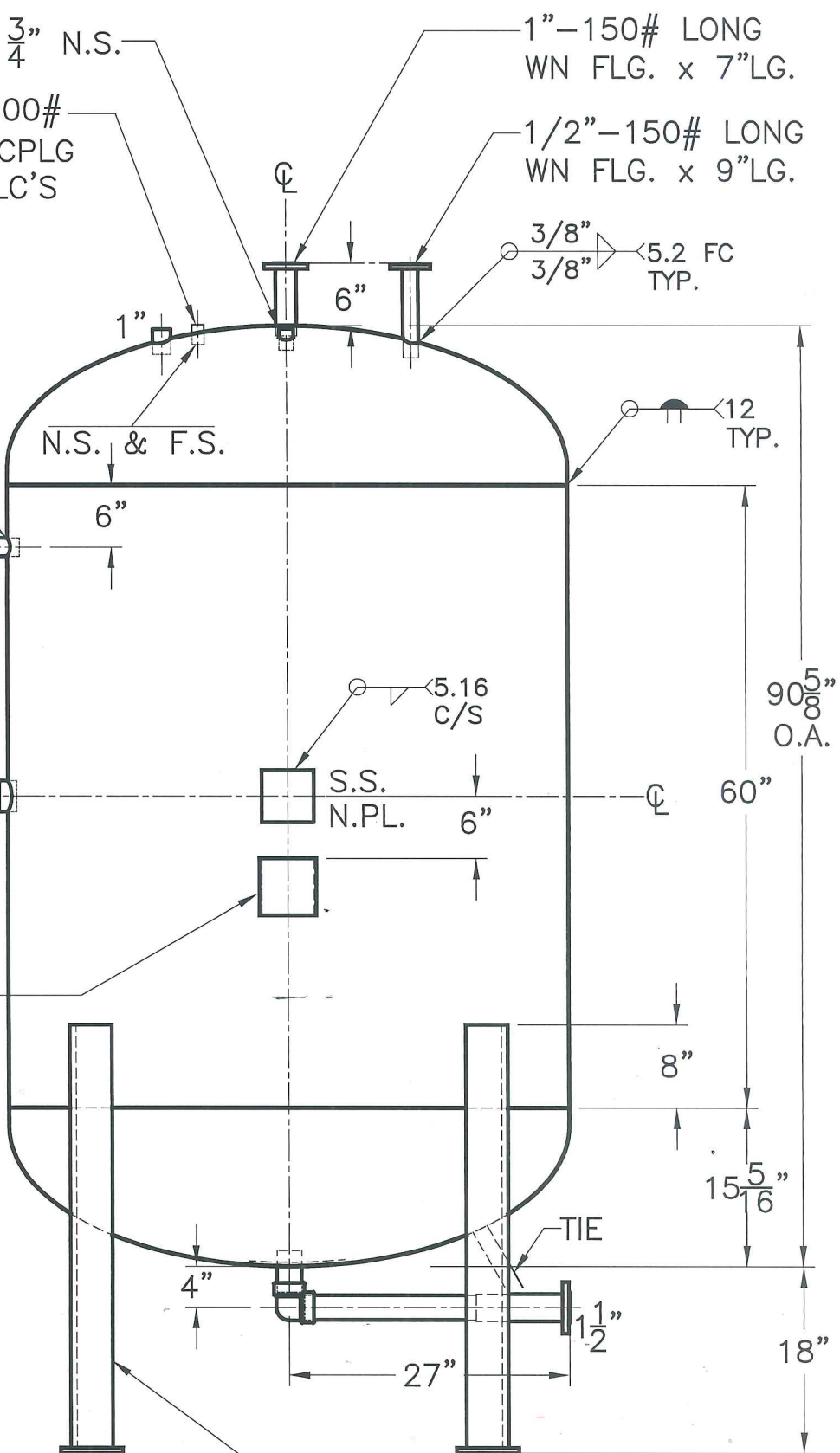
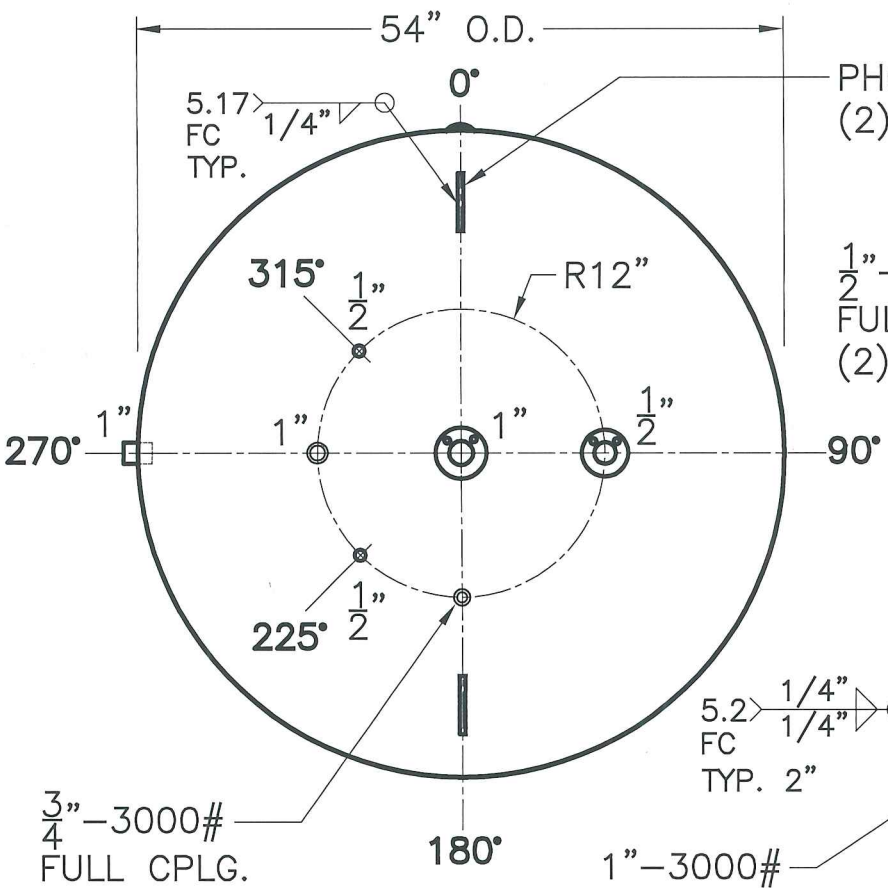


JOB No. _____
 DATE: _____

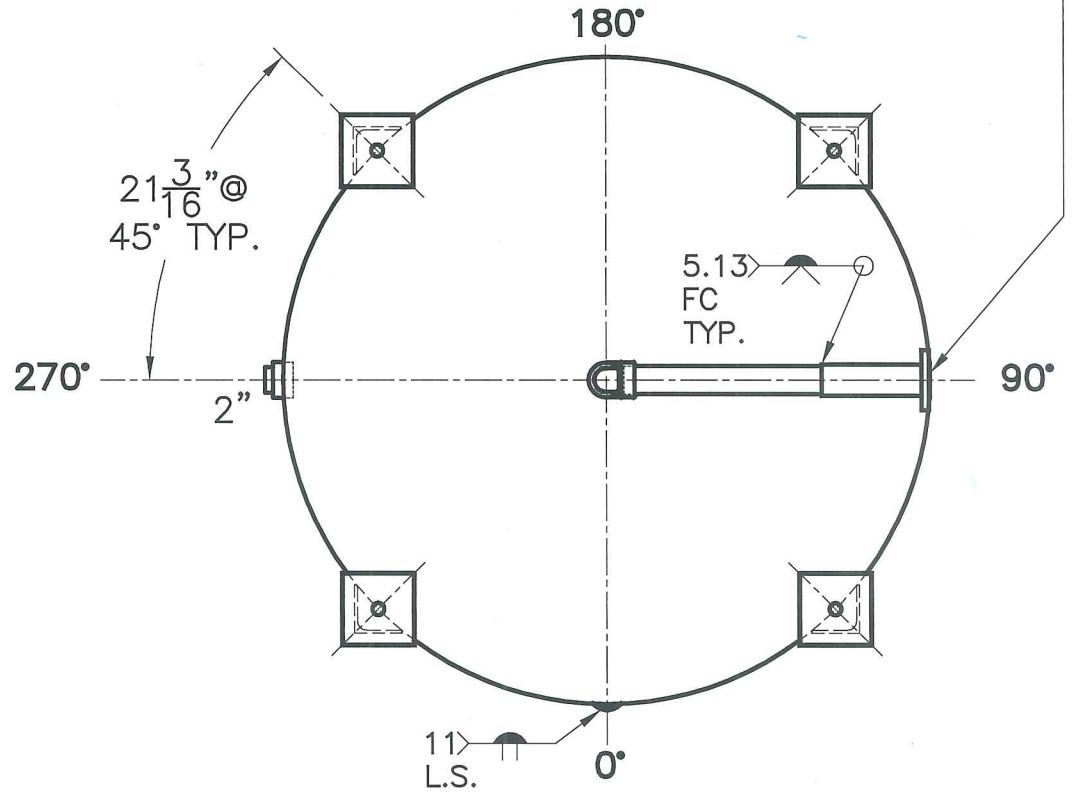


SHELL / HEADS	
.375" SA-612	.375" SA-612
M.A.W.P. 250 PSIG. @ 200 °F	M.A.W.P. 250 PSIG. @ 200 °F
M.D.M.T. -20 °F @ 250 PSIG.	M.D.M.T. -20 °F @ 250 PSIG.
ASME SECTION VIII DIV. 1, 2017	ASME SECTION VIII DIV. 1, 2017
X-RAY: RT-4 SPOT L.S. & HEAD G.S.	X-RAY: RT-4 SPOT L.S. & HEAD G.S.
GALLONS: 779	WT. 2180 LBS.
SERIAL NO.	
N.B.	

NOTE: 1) 2) PIPES SA-106-B SMLS. HYDRO @ 325 PSIG. MIN.

(4) 4" x 4" x 3/8" THK. x 40 13/16" LG. ANGLE LEGS
 (4) 6" x 6" x 1/2" THK. x PAD W/ 7/8" Ø HOLE

1 1/2" - 150# LONG WN FLG. x 9" LG. W/ 2" SCH. 80 PIPE x 16 1/2" LG. W/ 2" - 3000# SOCKET WELD 90° ELL W/ 2" SCH 80 PIPE x 4" LG.



FOR: PA-942-B	
VERT. LPG PROCESS TANK	REV. 12-5-18
NON CORROSIVE SERVICE	DATE: 11-12-18
SURFACE AREA = 135.7 SQ. FT.	
INSIDE: UNPAINTED & DYHYDRATE	
OUTSIDE: PRIME	
LEG ZONE: 3-15 KM.	
BY: J.G./B.C.	SCALE: 3/4" = 12"
ROY E. HANSON JR. MFG.	
LOS ANGELES, CA 90021	