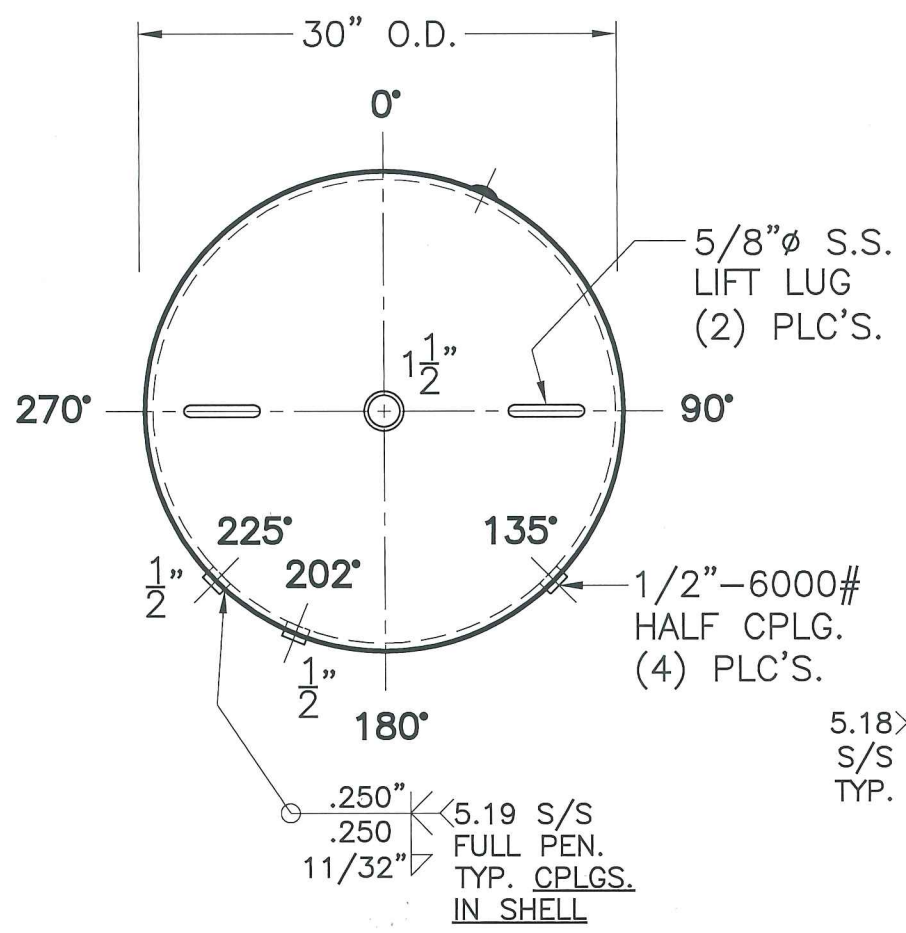


DATE	BY
6-4-15	JG
6-5-15	JG
6-25-15	RH
7-20-15	JG



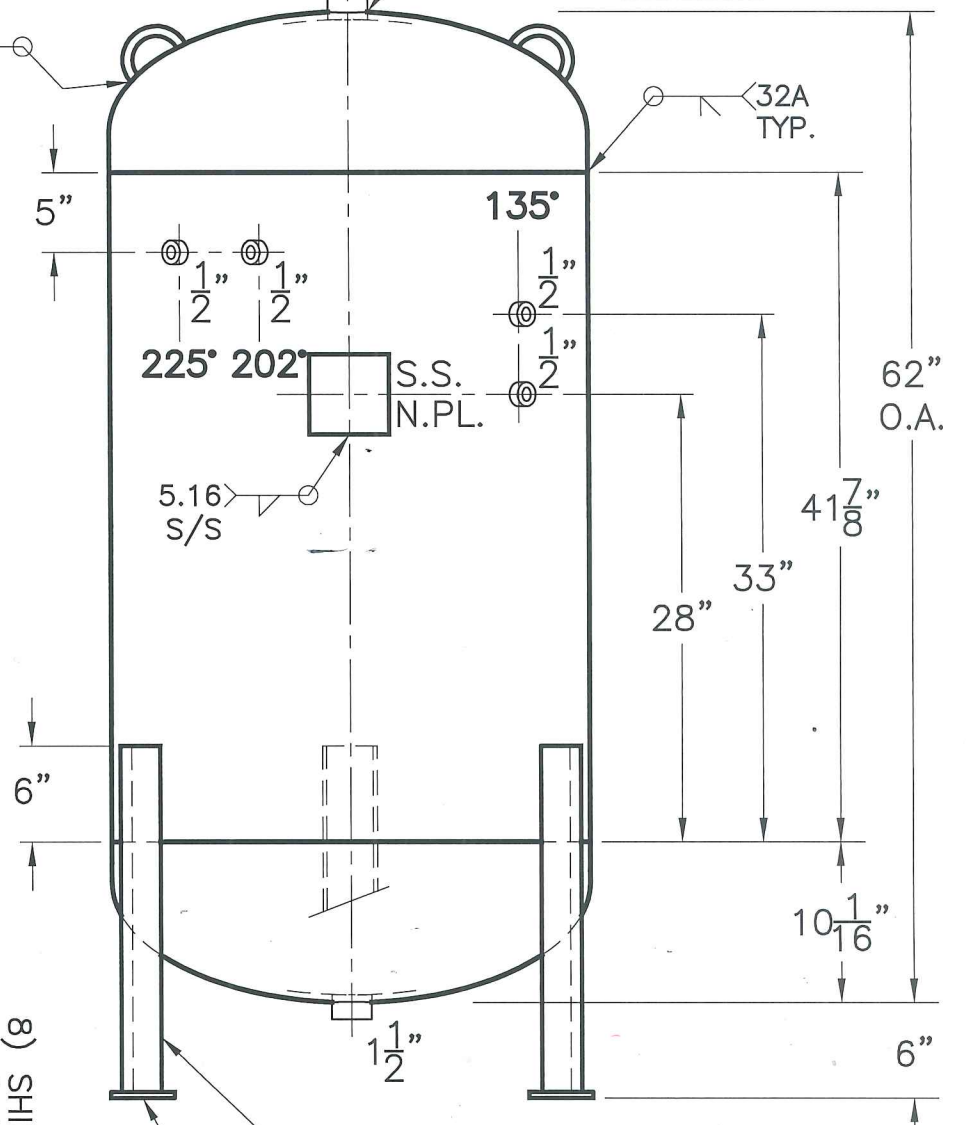
1 1/2"-3000#
HALF CPLG.
WITH DRY SEAL
FEMALE THREADS
(2) PLC'S.

1/2"-6000#
HALF CPLG.
(4) PLC'S.

.250" .250"
11/32" 5.19 S/S
FULL PEN.
TYP. CPLGS.
IN SHELL

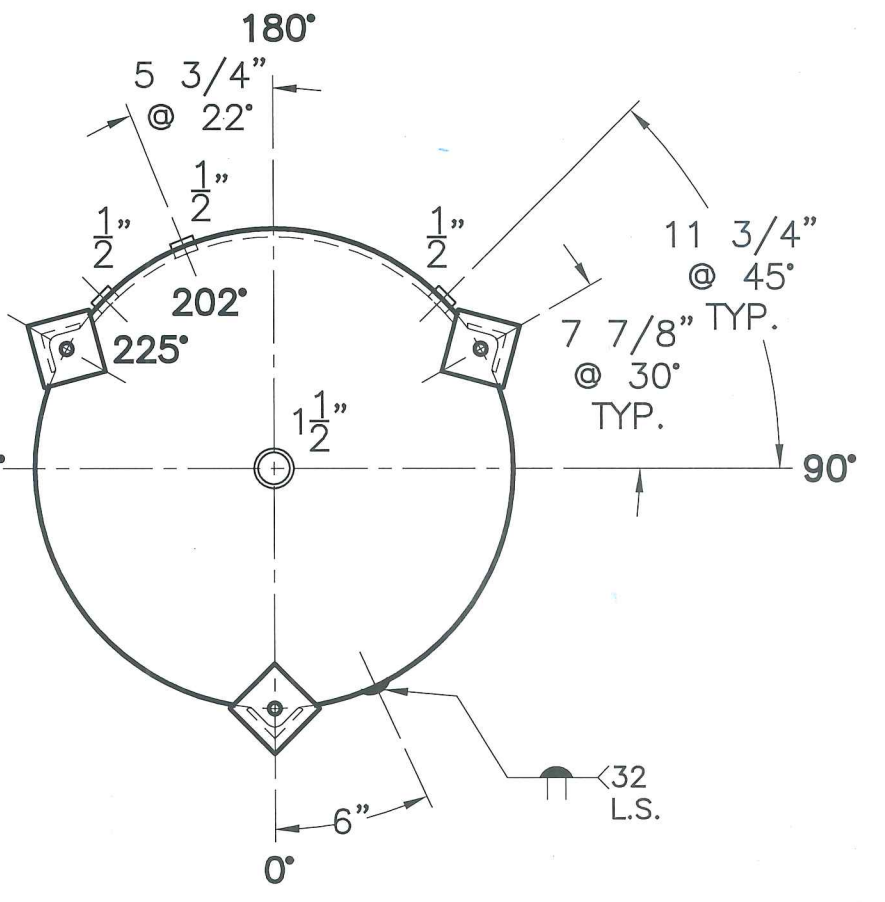
5.18 S/S
TYP.

.312" .312"
11/32" 5.19 S/S
FULL PEN.
TYP. CPLGS.
IN HEADS



(3) 3"x 3"x 1/4"THK.
x 21 11/16"LG. ANGLE LEGS
304 S.S.

(3) 4"x 4"x 3/8"THK.
PAD W/ 3/4"Ø HOLE
304 S.S.



- NOTE: 1) HYDRO @ 715 PSIG. MIN.
2) ALL FNPT'S SA-182-304 OR 316 S.S.
3) ALL FNPT'S FLUSH INSIDE.
4) PLASTIC PLUG ALL FNPT FOR SHIPPING.
5) HYDRO WITH CLEAR WATER.
6) PREHEAT TO 200°F BEFORE WELDING.
7) WELD O.D. W/ 5/16" WELDS. REMOVE AFTER HYDRO.
8) SHIP LOOSE. (2) EACH TANK. S.S. BUSHINGS.
1 1/2" MALE DRY SEAL THREADS x 1/2" FEMALE NPT.
HYDRO BOTH 1 1/2" CPLGS. W/ 3/8" SA-455 BLANK OFF.

SHELL / HEADS	
.625" SA-240-304	2:1 S.E.
(.472" MIN.)	
.500" SA-240-304	
M.A.W.P.	550 PSIG. @ 200 °F
M.D.M.T.	0 °F @ 550 PSIG.
ASME. SECTION VIII	DIV. 1, 2013
X-RAY:	RT-4 SPOT L.S. ONLY
GALLONS:	159 WT. 975 LBS.
SERIAL NO.	
N.B.	

FOR:	
VERT. DRY HYDROGEN/OXYGEN GAS TANK FOR NON-CORROSIVE SERVICE	
SURFACE AREA = 44.3 SQ. FT.	
INSIDE: CLEAN, UNLINED & DEHYDRATED	
OUTSIDE: BEAD BLAST, EPOXY, WHITE POLYURETHANE TOP COAT	
BY: E.S. / S.E.	SCALE: 1"=12"
LEG-ZONE 4-15 KM.	
ROY E. HANSON JR. MFG.	
1600 E. WASHINGTON BLVD. LOS ANGELES, CA 90021	
REV. 7-20-15	DATE: 6-4-15
MB-752-B	