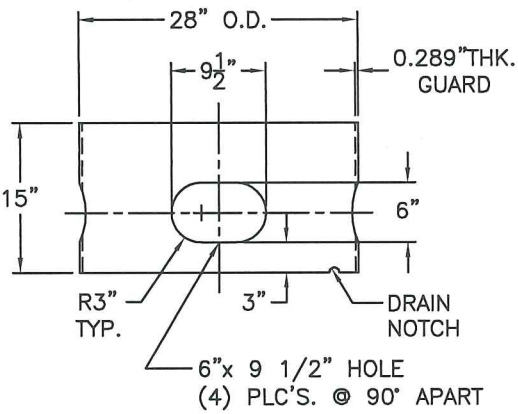
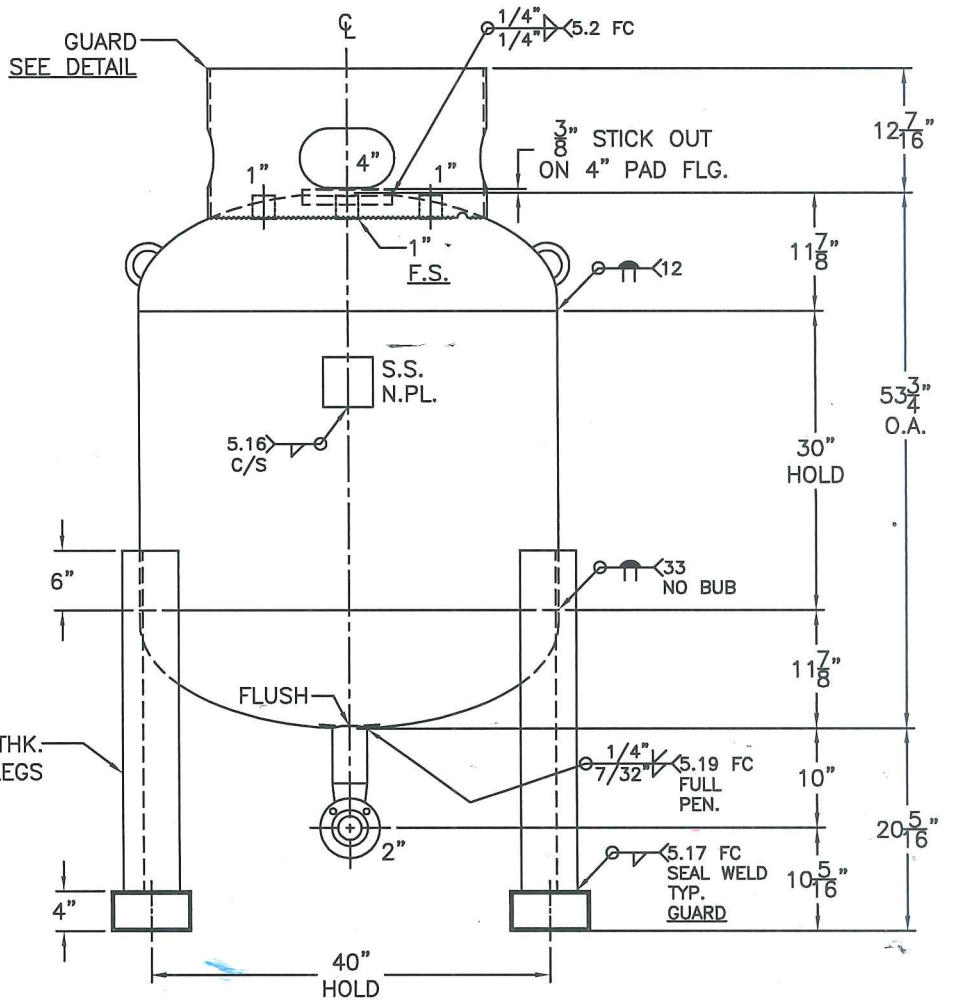
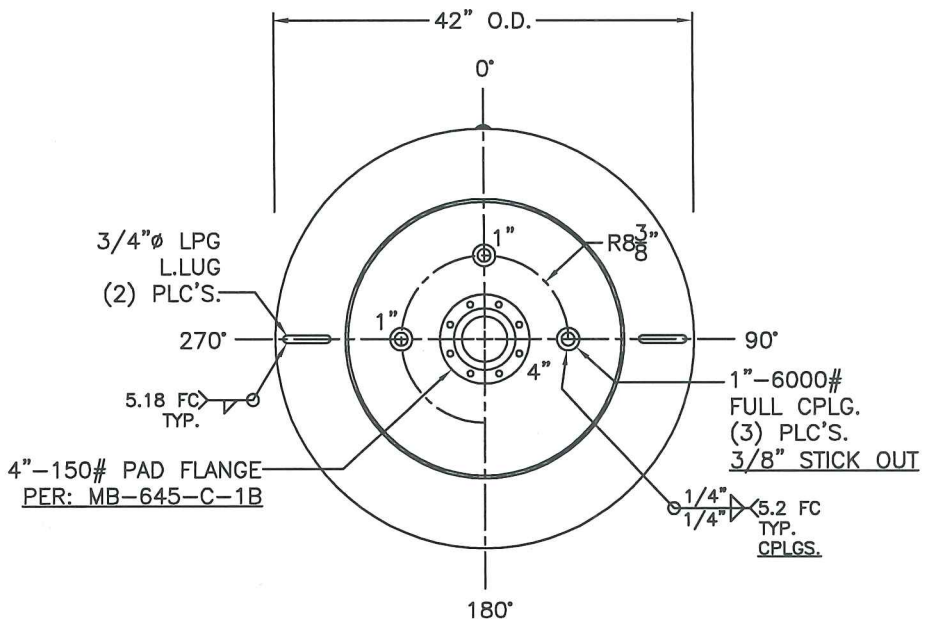


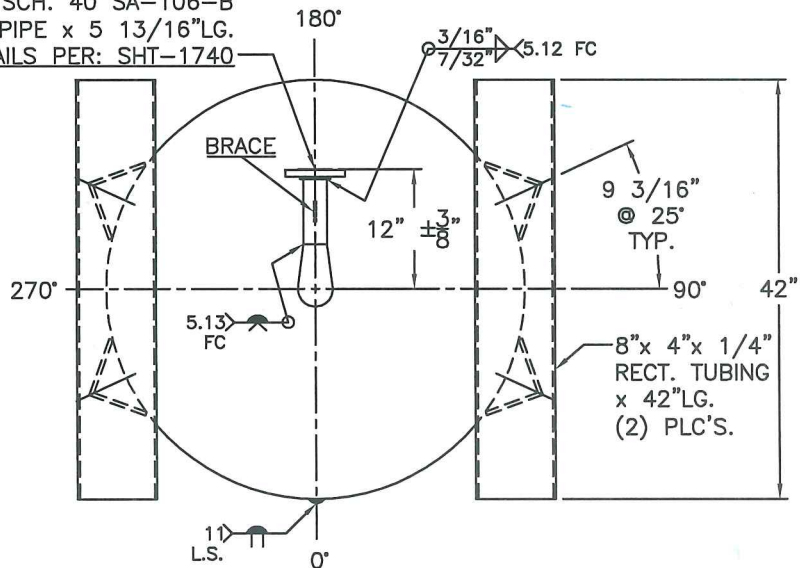
DATE	BY
1-20-12	BC



GUARD DETAIL

(4) 6"x 6"x 3/8"THK.
x 34 3/16"LG. ANGLE LEGS

1/4" RECESS-
2"-150# R.F.S.O. FLG.
W/ 2" SCH. 40 SA-106-B
PIPE x 7 1/4"LG.
W/ 3"x 2" STD. WT.
L.R. REDUCING ELL.
W/ 3" SCH. 40 SA-106-B
PIPE x 5 13/16"LG.
DETAILS PER: SHT-1740



NOTE: 1) HYDRO @ 195 PSIG. MIN. FOR (10) MINUTES MIN.
2) WELD BTM. HEAD PRIOR TO WELDING TOP HEAD.
3) DEHYDRATE AFTER HYDROTEST.
4) (2) SPOT X-RAY PER TANK-(1) G.S. & (1) L.S.

SHELL / HEADS	
TOP-.250" SA-455	2:1 S.E.
JOGGLE	
BTM-.250" SA-455	2:1 S.E.
TRIM	
.250" SA-455	
M.A.W.P. -15 PSIG. @ 180 °F	
M.A.W.P. 150 PSIG. @ 180 °F	
M.D.M.T. -20 °F @ 150 PSIG.	
ASME SECTION VIII DIV. 1, 2010 ADD 2011	
X-RAY: RT-4 SPOT G.S. & L.S.	
GALLONS: 274	WT. 1090 LBS.
SERIAL NO.	
N.B.	
FOR: MB-646-C	
DATE: 1-20-12	REV.
VERT. NITROGEN/SILICA TANK	
FULL VACUUM	
NON-CORROSIVE SERVICE	
SURFACE AREA = 57.0 SQ. FT.	
INSIDE: SAND BLAST WITH LW-21(b)	
OUTSIDE: SAND BLAST, PRIME & LPG WHITE	
BY: E.S. / B.C. SCALE: 1"=12"	
ROY E. HANSON JR. MFG.	
1600 E. WASHINGTON BLVD.	
LOS ANGELES, CA 90021	