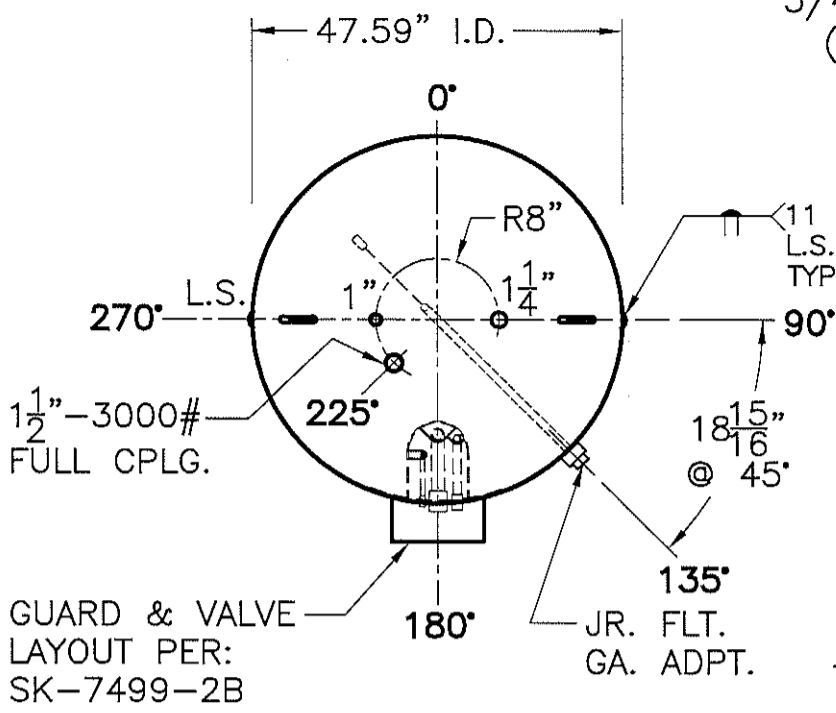


JOB No. \_\_\_\_\_  
 DATE: \_\_\_\_\_



GUARD & VALVE LAYOUT PER: SK-7499-2B

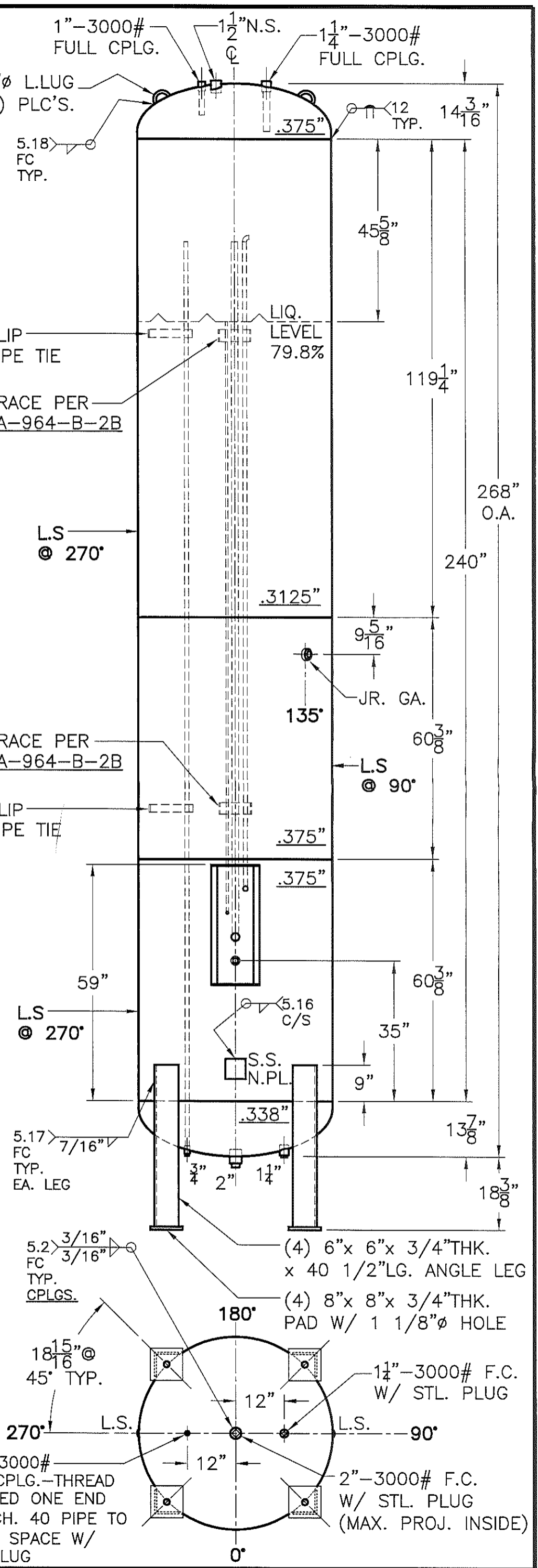
EACH TANK  
 2 - R.V.  
 2 - FLOAT GA.  
 BY CUST.  
 2 TANKS

D.T. N.P.L.	56 3/4"
LIQUID LEVEL	79.8%
	43 5/8"

SHELL/HEADS	
TOP .375" SA-516-70 2:1 S.E.	(.373" MIN.) - BEVEL
BTM. .338" SA-612 2:1 S.E.	(.326" MIN.) - BEVEL
	.3125" SA-612 - TOP
	.375" SA-612 - LOWER
M.A.W.P. 250 PSIG. @ 200 °F	
M.D.M.T. -20 °F @ 250 PSIG.	
ASME SECTION VIII DIV. 1, 2019	
X-RAY: RT-4 SPOT .3125" L.S. ONLY	
GALLONS: 1999 W.C. WT. 4770 LBS.	
SERIAL NO.	
N.B.	

NOTE: 1) HYDRO @ 325 PSIG. MIN.  
 2) WELDS TO, OR JOINING SA-612 HAVE W.P.S. W/ SUFFIX "B".  
 3) INTERNAL PIPES PER: PA-964-B-2B.  
 4) 1999 GALLONS ARE GROSS U.S. GALLONS.  
 5) IBC 2018: WIND LOAD: 115 mph, CAT: III  
 SEISMIC: SITE C, FACTOR: 1.25, RISK CAT: III

FOR: VERT. L.P.G. TANK.	PA-964-B	REV. 6-7-21
SURFACE AREA = 287.6 SQ. FT.	DATE: 5-24-21	
C.F.M. REQ'D. = 5568		
INSIDE: UNPAINTED		
OUTSIDE: PRIME		
BY: J.G./B.C.	SCALE: 1/2"=12"	
<b>ROY E. HANSON JR. MFG.</b>		
LOS ANGELES, CA 90021		



3/4"-3000# FULL CPLG.-THREAD REMOVED ONE END W/ SCH. 40 PIPE TO VAPOR SPACE W/ STL. PLUG

(4) 6"x 6"x 3/4"THK. x 40 1/2"LG. ANGLE LEG  
 (4) 8"x 8"x 3/4"THK. PAD W/ 1 1/8"Ø HOLE  
 1 1/4"-3000# F.C. W/ STL. PLUG  
 2"-3000# F.C. W/ STL. PLUG (MAX. PROJ. INSIDE)