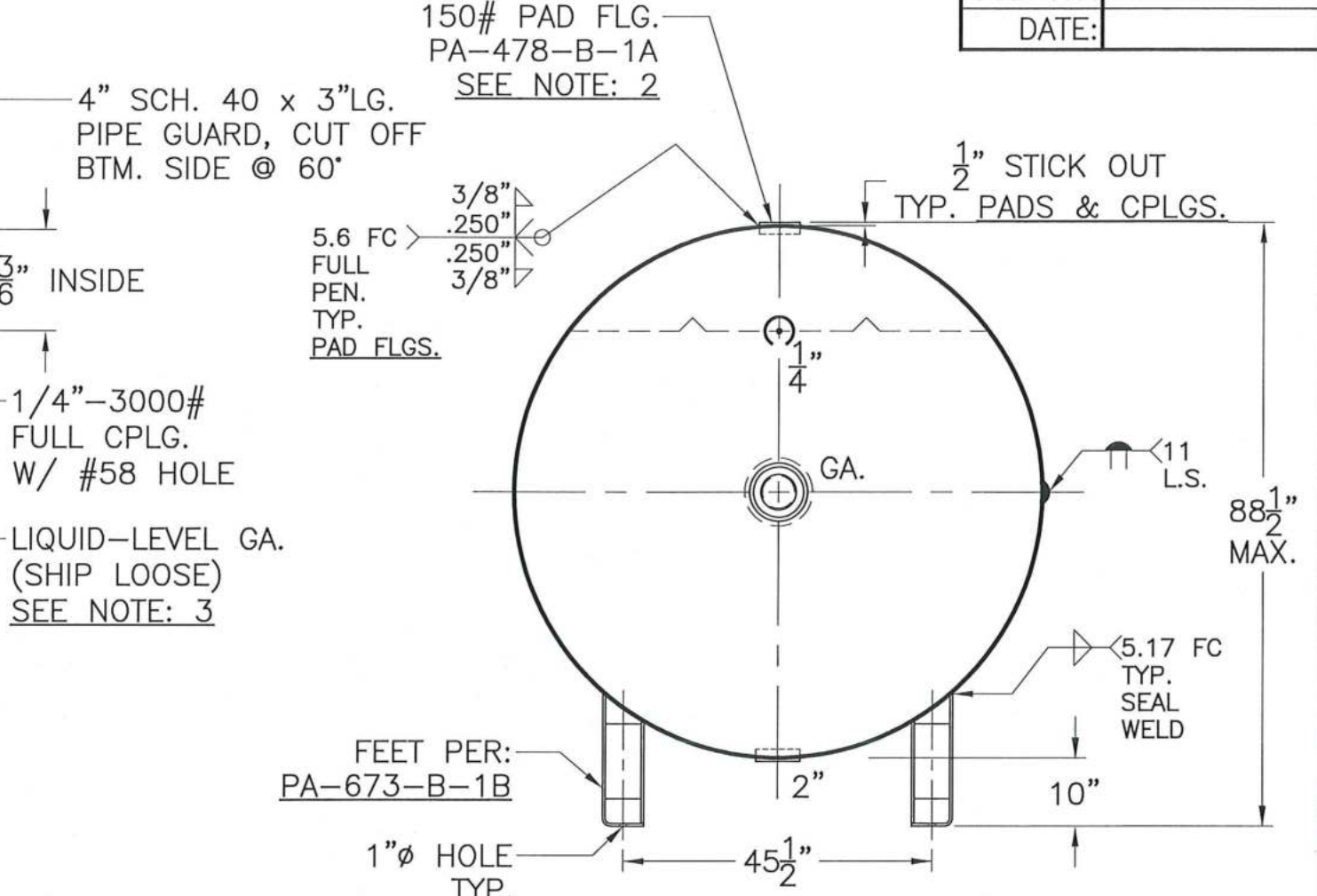
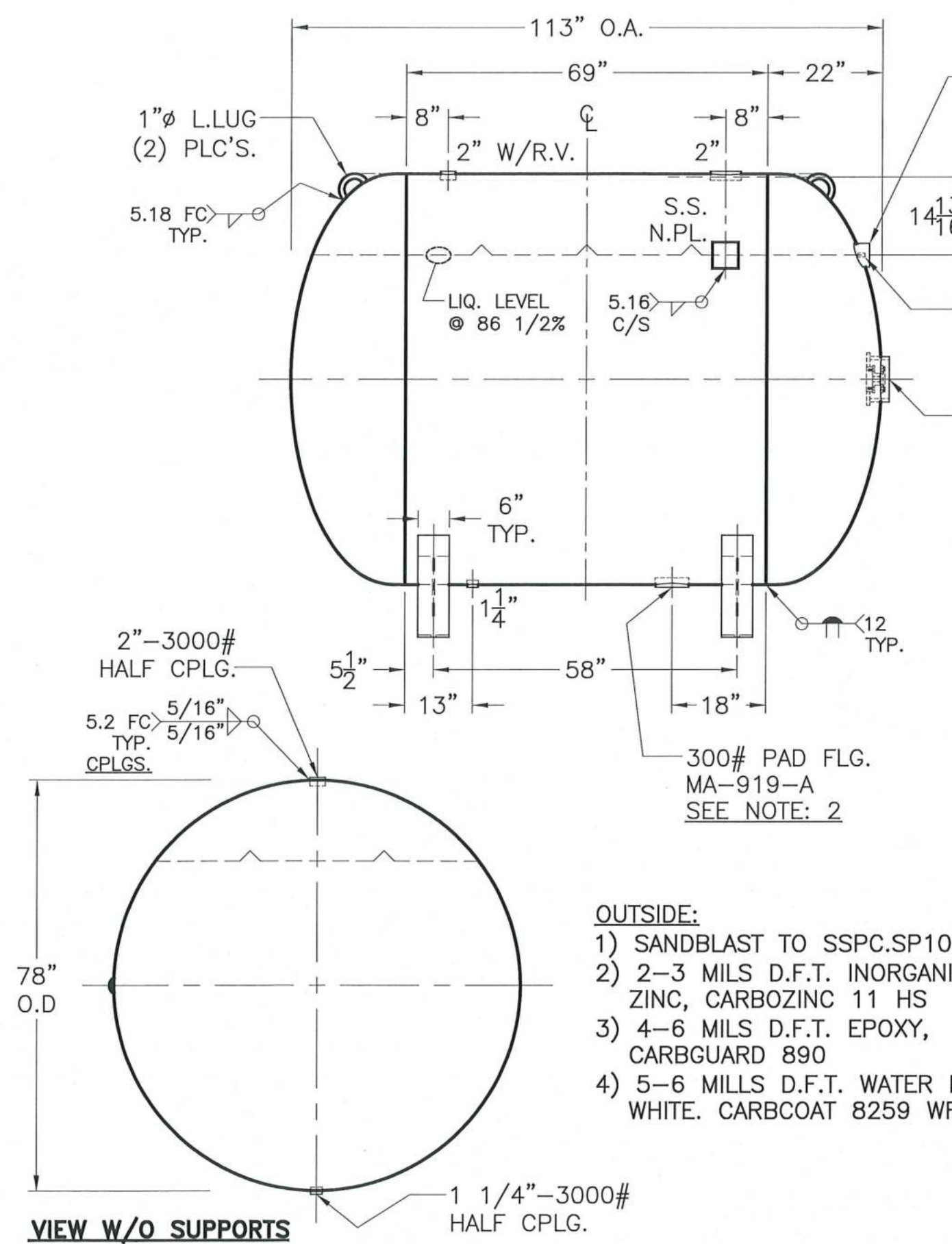


JOB No. _____
 DATE: _____



- 5) ALL VALVES EXCEPT 1/4" OUTAGE & 2" R.V. BY CUSTOMER.
- 4) WELDS TO OR, JOINING SA-612 HAVE WPS W/SUFFIX "B".
- 3) FLOAT GA. DETAIL PER: PA-913-B-2A.
- 2) BOLT HOLES ON PAD FLGS. TO STRADDLE TANK CENTERLINE.
- NOTE. 1) HYDRO @ 325 PSIG. MIN.

- OUTSIDE:**
- 1) SANDBLAST TO SSPC.SP10
 - 2) 2-3 MILS D.F.T. INORGANIC ZINC, CARBOZINC 11 HS
 - 3) 4-6 MILS D.F.T. EPOXY, CARBGUARD 890
 - 4) 5-6 MILS D.F.T. WATER BASE WHITE. CARBCOAT 8259 WR

SHELL / HEADS	.625" SA-516-70 2:1 S.E. (.531" MIN.)	PA-913-B	REV. 2-1-19
			DATE: 7-23-15
		FOR:	
	.500" SA-612	HORIZ. LPG TANK	
		SURFACE AREA = 218.7 SQ. FT.	
		C.F.M. REQ'D = 4428	
M.A.W.P. 250 PSIG. @ 130 °F		INSIDE: UNPAINTED	
M.D.M.T. -20 °F @ 250 PSIG.			
ASME. SECTION VIII DIV. 1, 2017		OUTSIDE: SEE NOTE:	
X-RAY: RT-4 SPOT L.S. & SPOT HEADS G.S.			
GALLONS: 2000	WT. 5490 LBS.	BY: J.G./B.C.	SCALE: 1/2"=12"
SERIAL NO.		ROY E. HANSON JR. MFG.	
N.B.		LOS ANGELES, CA 90021	

VIEW W/O SUPPORTS