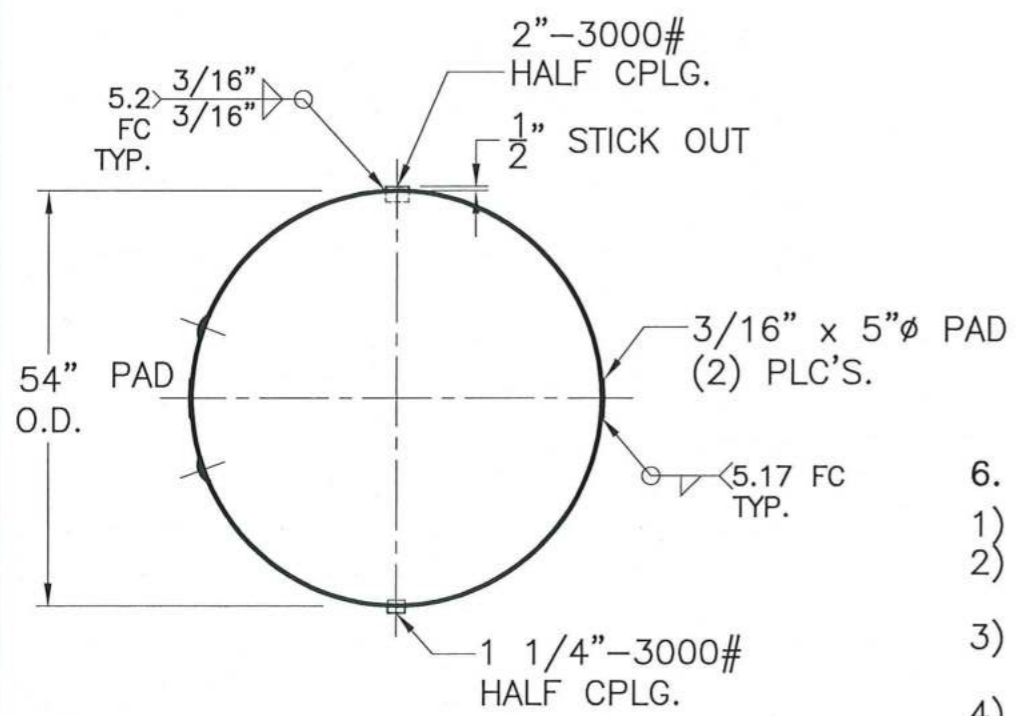
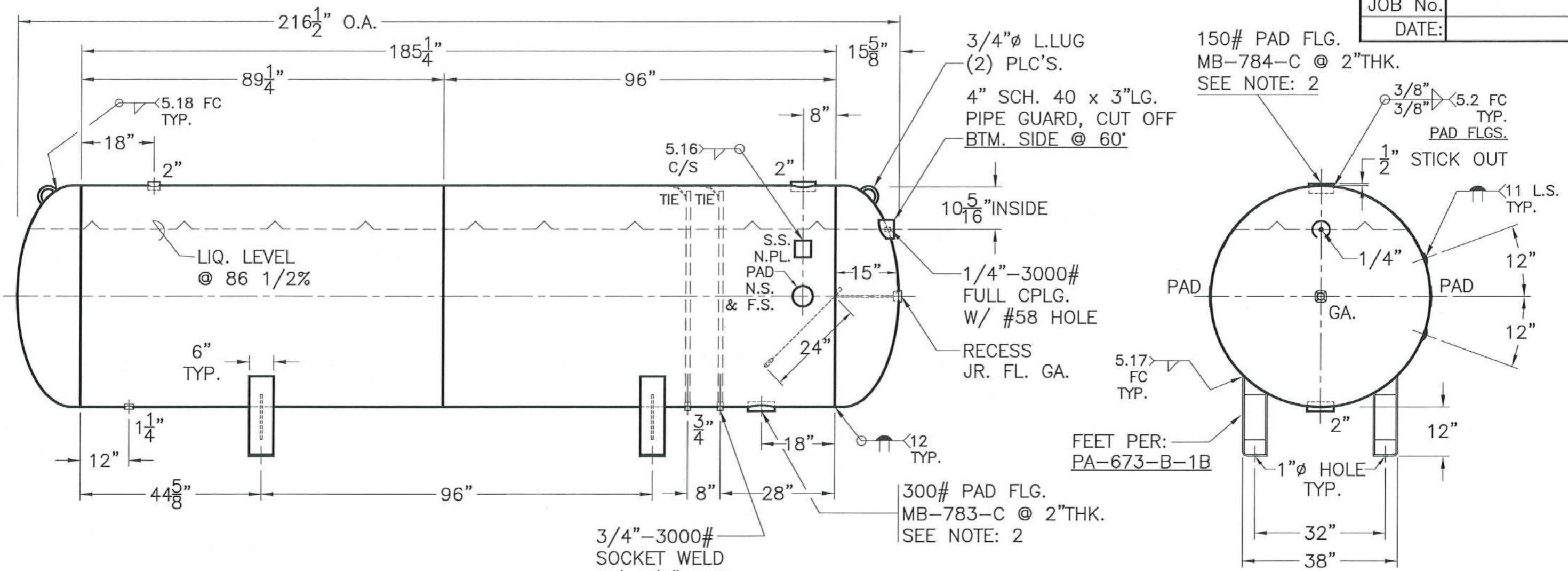


JOB No. _____
DATE: _____



VIEW W/O SUPPORTS

6. OUTSIDE:
- 1) SANDBLAST TO SSPC.SP10
 - 2) 2-3 MILS D.F.T. INORGANIC ZINC, CARBOZINC 11 HS
 - 3) 4-6 MILS D.F.T. EPOXY, CARBOGUARD 890
 - 4) 5-6 MILS D.F.T. WATER BASE WHITE CARBOCOAT 8259 WR

- 4) C.F.M. REQ'D = 5242.6
 - 3) USE FLOAT GA. - PO 57987 OR LATER.
 - 2) BOLT HOLES ON PAD FLG'S TO STRADDLE TANK CENTERLINE.
- NOTE. 1) HYDRO @ 325 PSIG. MIN.

SHELL / HEADS	.375" SA-516-70 2:1 S.E.	PA-673-B	REV. 4-10-20
			DATE: 8-29-95
		FOR:	
		HORIZ. PROPANE TANK	
		SURFACE AREA = 267.3 SQ. FT.	
		INSIDE: UNPAINTED	
	M.A.W.P. 250 PSIG. @ 130 °F		
	M.D.M.T. -20 °F @ 250 PSIG.	OUTSIDE: S.BLAST & SEE NOTE: 6	
	ASME. SECTION VIII DIV. 1, 2019		
	X-RAY: RT-4 SPOT L.S. & HDS. G.S.		
	GALLONS: 2000 WT. 4595 LBS.	BY: J.G.	SCALE: 1/2"=12"
	SERIAL NO.	ROY E. HANSON JR. MFG.	
	N.B.	LOS ANGELES, CA 90021	