

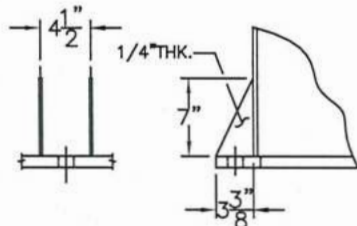
LEGEND

MARK	QTY.	DESCRIPTION	SERVICE
M1	1	24" M.WAY W/PAD & DAVIT PER: AG-598-C-1A	MANWAY
N1	1	4"-150# R.F.S.O. FLG. W/ SCH 120 PIPE x 7 5/16" LG.	INLET
N2	1	4"-150# R.F.S.O. FLG. W/ SCH 120 PIPE x 7 5/16" LG.	OUTLET
N3	1	1 1/2"-150# R.F.S.O. FLG. W/SCH 80 PIPE x 10" LG.	PSV
N4	1	2"-150# R.F.S.O. FLG. W/ SCH 80 PIPE x 10" LG.	VENT
N5	1	1 1/2"-150# R.F.S.O. FLG. W/SCH 80 PIPE x 7" LG.	PI CONN
N6	1	2"-150# R.F.S.O. FLG. W/ SCH 80 PIPE x 62 3/4" LG. W/SCH 80 90° L.R. ELL W/SCH 80 PIPE x 9" LG.	DRAIN
N7	1	1 1/2"-150# R.F.S.O. FLG. W/SCH 80 PIPE x 7" LG.	INSTR CONN

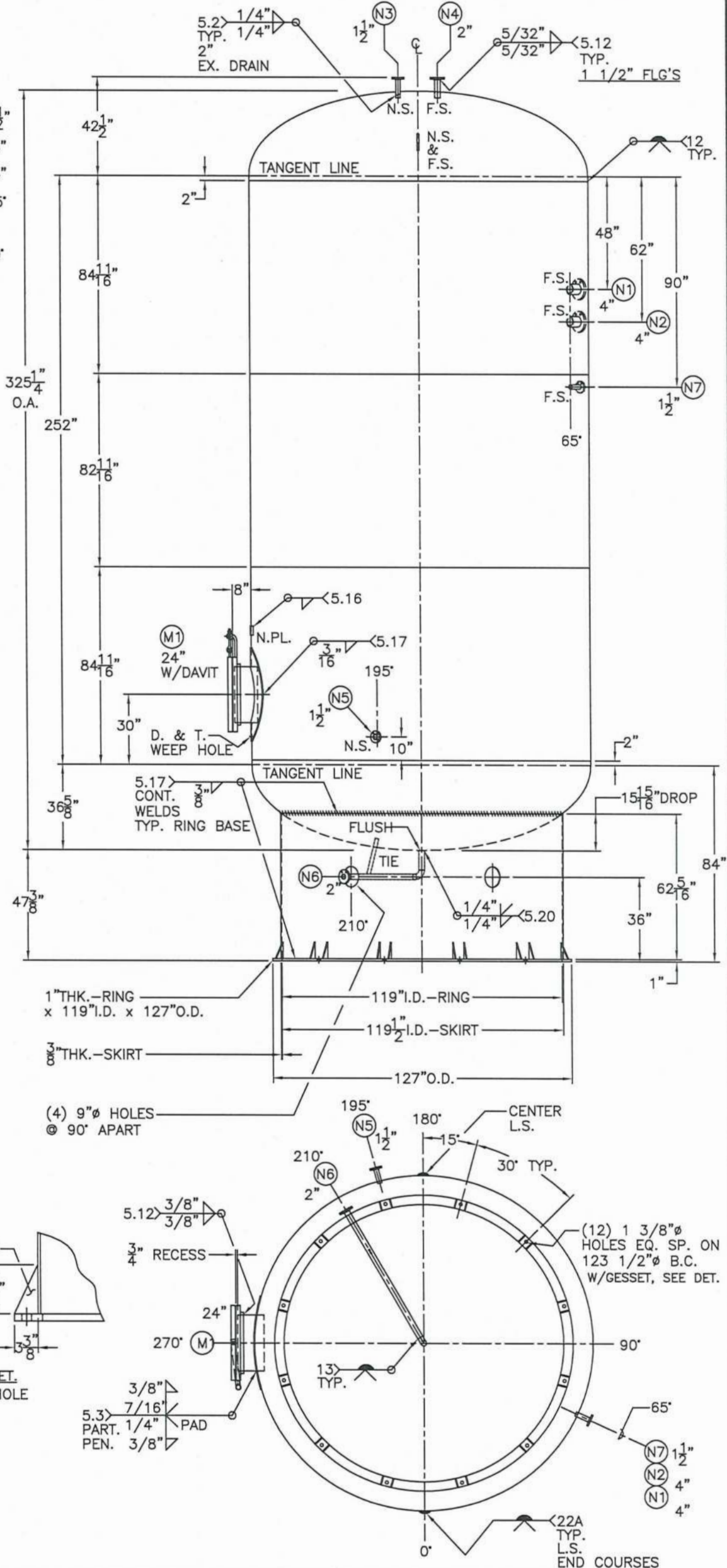
NEWPORT CHEMICAL DISPOSAL FACILITY
 NECDF PROJECT
 EQUIP. TITLE: AIR RECEIVER FOR INSTRUMENT AIR
 TAG NUMBER: O-M-2001-A
 PURCHASE ORDER NO: 735320-00201
 SECTION III, LETTER ITEM NO: 15480 - 1548002
 1548005, 1548006, 1548010

SHELL / HEADS	
M.A.W.P.	142 PSIG. @ 200 °F
M.D.M.T.	-20 °F @ 142 PSIG.
ASME SECTION VIII	DIV. 1, 1998 ADD 2000
X-RAY:	RT-2 SEE NOTE: 3
GALLONS:	21000 WT. 34195 LBS.
SERIAL NO.	
N.B.	

NOTE: 1) 3) FULL L.S. & SPOT HEAD G.S. PLUS 100% ON HEAD
 2) SPlice BY HEAD MANUFACTURE:
 PRE HEAT BEFORE WELDING TO 150F.
 HYDRO @ 185 PSIG. MIN. - 2000 ADDENDA.



GUSSET DET.
(2) PER HOLE



AG-619-C	
FOR:	AG-619-C
DATE:	1/22/01
REV:	8/16/01
INSIDE:	UNPAINTED
OUTSIDE:	PRIME
TAG:	O-M-2001-A
VERT. AIR TANK	
BY: J.G. / BILL	SCALE: 3/8"=12"
ROY E. HANSON JR. MFG.	
1924 COMPTON AVE.	
LOS ANGELES, CA 90011	