

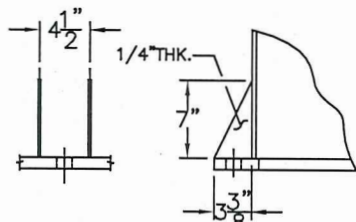
LEGEND

MARK	QTY.	DESCRIPTION	SERVICE
M1	1	24" M.WAY W/PAD & DAVIT PER: AG-598-C-1A	MANWAY
N1	1	4"-150# R.F.S.O. FLG. W/ SCH 120 PIPE x 7 5/16" LG.	INLET
N2	1	4"-150# R.F.S.O. FLG. W/ SCH 120 PIPE x 7 5/16" LG.	OUTLET
N3	1	1 1/2"-150# R.F.S.O. FLG. W/SCH 80 PIPE x 10" LG.	PSV
N4	1	2"-150# R.F.S.O. FLG. W/ SCH 80 PIPE x 10" LG.	VENT
N5	1	1 1/2"-150# R.F.S.O. FLG. W/SCH 80 PIPE x 7" LG.	PI CONN
N6	1	2"-150# R.F.S.O. FLG. W/ SCH 80 PIPE x 62 3/4" LG. W/SCH 80 90° L.R. ELL W/SCH 80 PIPE x 9" LG.	DRAIN
N7	1	1 1/2"-150# R.F.S.O. FLG. W/SCH 80 PIPE x 7" LG.	INSTR CONN

NEWPORT CHEMICAL DISPOSAL FACILITY
NECDF PROJECT
EQUIP. TITLE: AIR RECEIVER INSTRUMENT AIR
TAG NUMBER: O-M-2001-B
PURCHASE ORDER NO: 735320-00201
SECTION III, LETTER ITEM NO: 15480 - 1548002
1548005, 1548006, 1548010

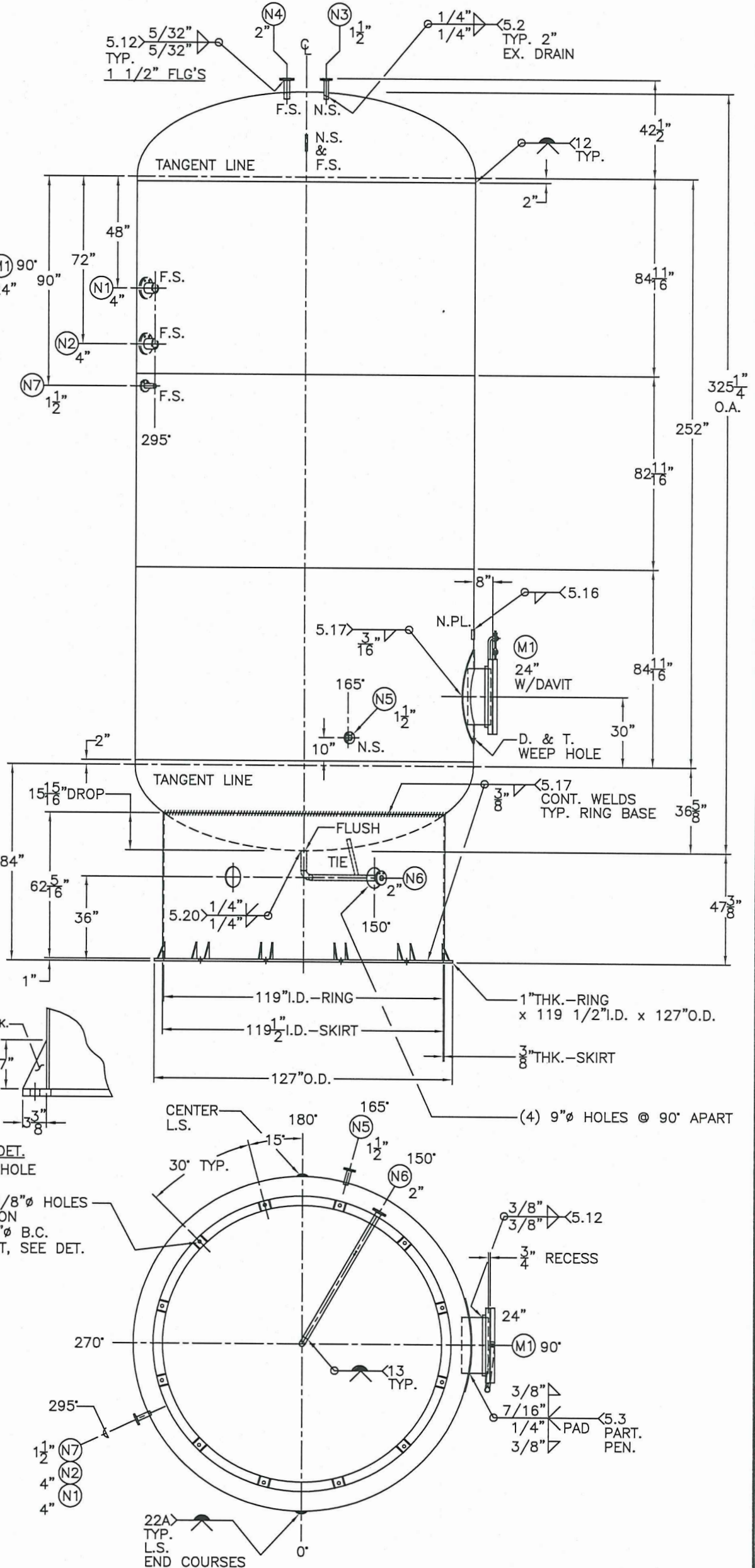
SHELL / HEADS	
MA.W.P.	142 PSIG. @ 200 °F
M.D.M.T.	-20 °F @ 142 PSIG.
ASME SECTION VIII	DIV. 1, 1998 ADD 2000
X-RAY:	RT-2 SEE NOTE: 3
GALLONS:	21000 WT. 34195 LBS.
SERIAL NO.	
N.B.	

NOTE: 1) HYDRO @ 185 PSIG. MIN. - 2000 ADDENDA.
2) PRE HEAT BEFORE WELDING TO 150°F.
3) FULL U.S. & SPOT HEAD G.S. PLUS 100% ON HEAD
SPICE BY HEAD MANUFACTURE:
W/ GUSSET, SEE DET.



GUSSET DET.
(2) PER HOLE

(12) 1 3/8" Ø HOLES
EQ. SP. ON
123 1/2" Ø B.C.
W/GUSSET, SEE DET.



BY: J.G. / BILL SCALE: 3/8"=12"
ROY E. HANSON JR. MFG.
1924 COMPTON AVE.
LOS ANGELES, CA 90011

AG-598-C
REV. 8/16/01
DATE: 11/22/00

FOR: VERT. AIR TANK
TAG: O-M-2001-B
INSIDE: UNPAINTED
OUTSIDE: PRIME