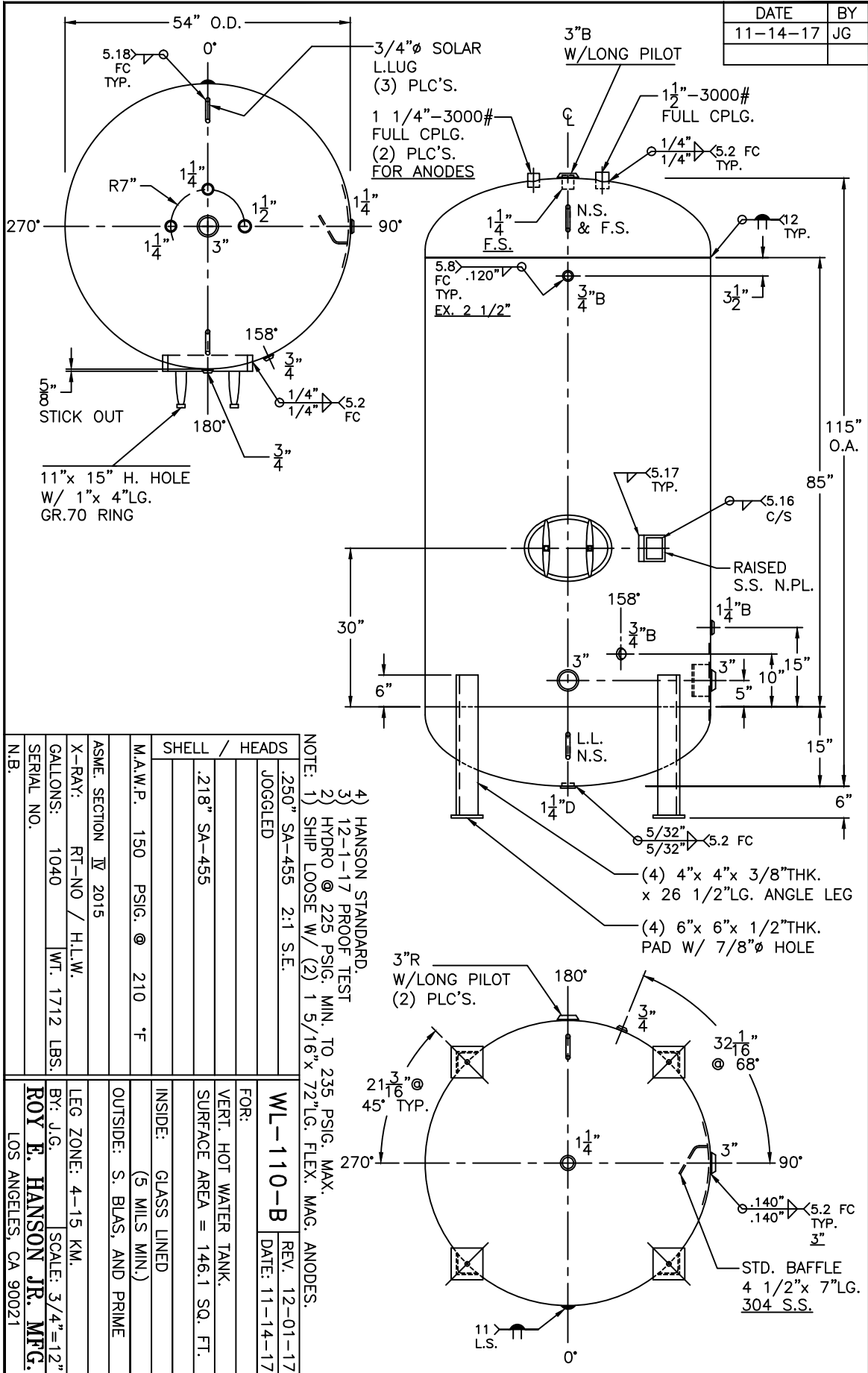


DATE	BY
11-14-17	JG



ASME SECTION IV 2015		M.A.W.P. 150 PSIG. @ 210 °F		SHELL / HEADS	
X-RAY: RT-NO / H.L.W.		.218" SA-455		JOGGLED	
GALLONS: 1040		WT. 1712 LBS.		.250" SA-455 2:1 S.E.	
SERIAL NO.		N.B.		4) HANSON STANDARD.	
N.B.				3) 12-1-17 PROOF TEST	
				2) HYDRO @ 225 PSIG. MIN. TO 235 PSIG. MAX.	
				NOTE: 1) SHIP LOOSE W/ (2) 1 5/16" x 72" LG. FLEX. MAG. ANODES.	
LEG ZONE: 4-15 KM.		FOR: WL-110-B		REV. 12-01-17	
BY: J.G.		SCALE: 3/4"=12"		DATE: 11-14-17	
ROY E. HANSON JR. MFG.		VERT. HOT WATER TANK.		SURFACE AREA = 146.1 SQ. FT.	
LOS ANGELES, CA 90021		INSIDE: GLASS LINED		OUTSIDE: S. BLAS. AND PRIME	