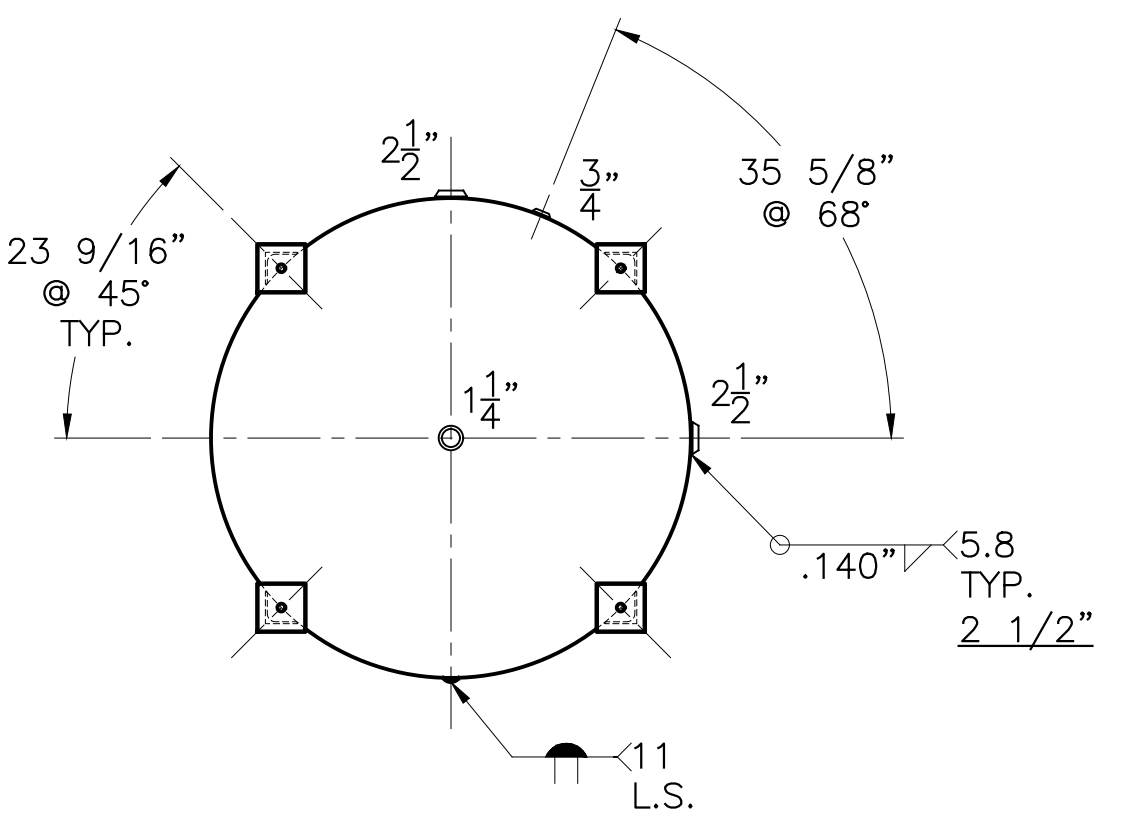


(4) 4"x 4"x 1/2" THK. x 27" LG. ANGLE LEG
 (4) 6"x 6"x 1/2" THK. PAD W/ 7/8" Ø HOLE



NOTE: 1) 2) 5-6-04 PROOF TEST.
 HYDRO @ 188 PSIG. MIN. TO 197 PSIG. MAX.

SHELL / HEADS		.225" SA-455 2:1 S.E. (.199" MIN.)	
M.A.W.P.	125 PSIG. @ 180 °F	FOR:	HANSON STANDARD
ASME SECTION	IV 2001 ADD. 2003	VERT. HOT WATER TANK	
X-RAY:	RT-NO / H.L.W.	SURFACE AREA = 185.0 SQ. FT.	
GALLONS:	1450 WT: 2075 LBS.	INSIDE: EPOXY LINED	
SERIAL NO.		OUTSIDE: PRIME	
N.B.		LEG-ZONE 4-15 KM.	
		CAD-"B" SIZE UNDER "ES"-SERIES	
		BY: E.S. SCALE: 1/2"=12"	
		ROY E. HANSON JR. MFG.	
		1924 COMPTON AVE. LOS ANGELES, CA 90011	
		REV. 9-13-04	
		DATE: 9-13-89	