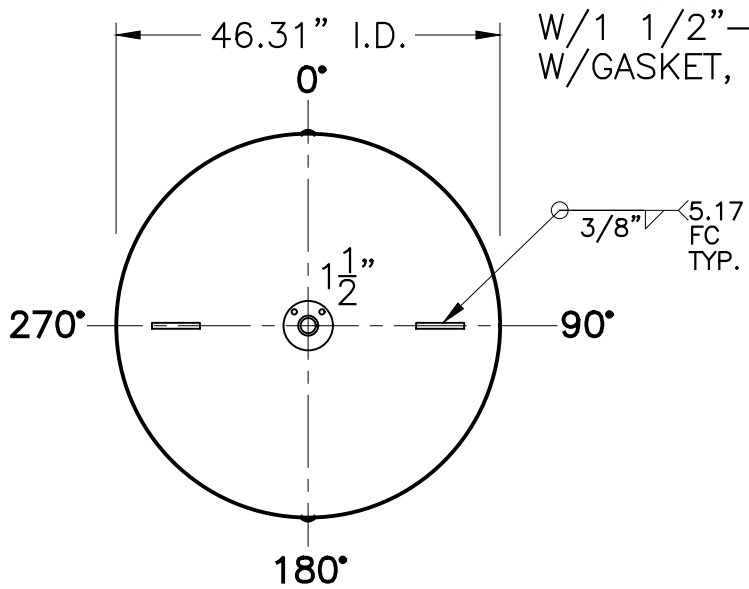


DATE	BY
7-10-13	R.H.
8-23-13	R.H.

1 1/2"-600# R.F.S.O.  
 FLG. W/SCH 160, SA106B  
 PIPE x 7"LG.  
 W/1 1/2"-600# R.F. BLIND  
 W/GASKET, BOLTS & NUTS

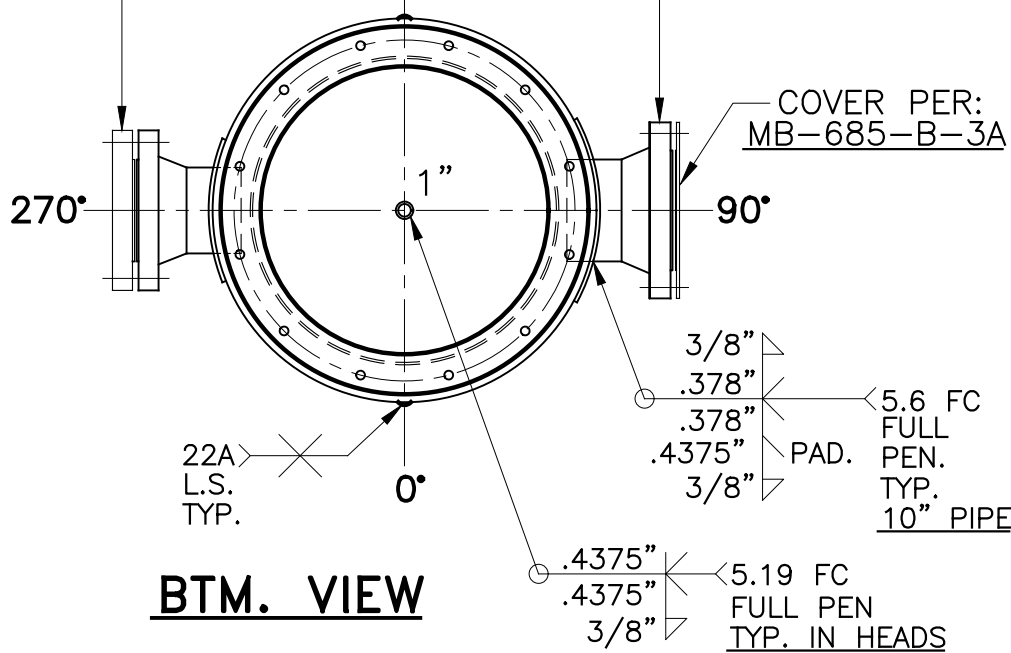
3/4"THK. L.LUG  
 PER: MA-338-A  
 (2) PLC'S



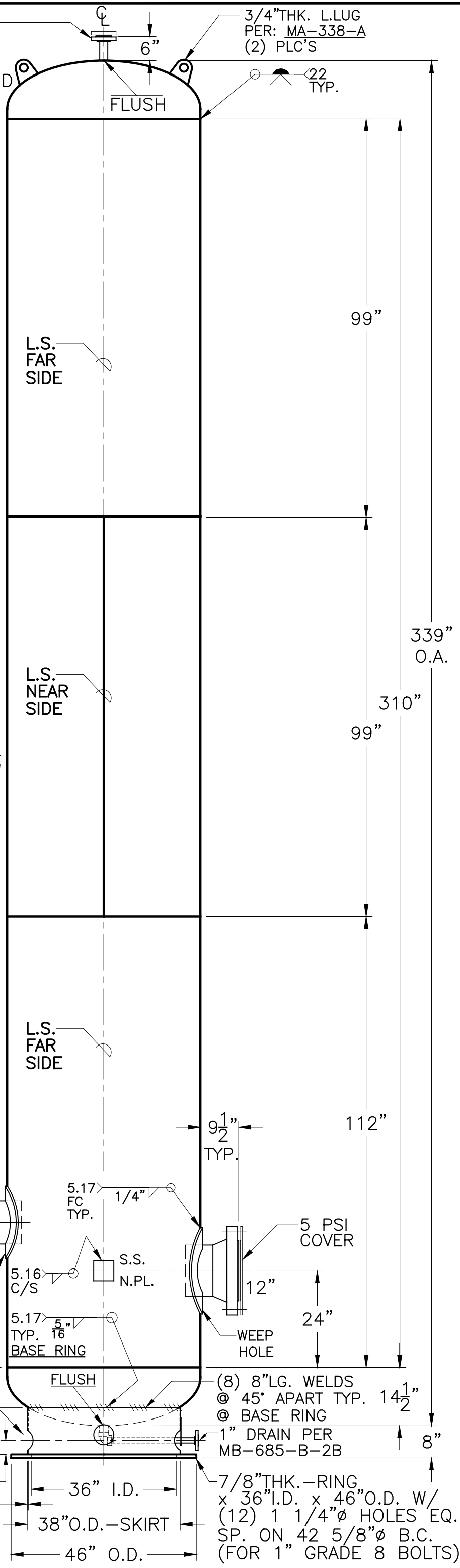
**TOP VIEW**

10"-600# R.F.W.N. FLG.  
 W/BLIND FLG.  
 PER: MB-685-B-1A  
 INSPECTION OPENING 180°

12"-600# R.F.W.N. FLG.  
 PER: MB-685-B-2A



**BTM. VIEW**



SHELL/HEADS	
HOT FORMED	.770" MIN. SA-516-70 2:1 S.E.
.756" SA-516-70	
M.A.W.P.	640 PSIG. @ 350 °F
M.D.M.T.	-20 °F 640 PSIG
ASME. SECTION VIII DIV. 1, 2010 ADD 2011	
X-RAY: RT-4 100% L.S. & SPOT ALL G.S.	
GALLONS: 2400	WT. 13,410 LBS.
SERIAL NO.	
N.B.	

NOTE: 1) HYDRO @ 832 PSIG. MIN.  
 2) PRE HEAT TO 150°F BEFORE WELDING.  
 3) TNEMEC N69-1211 HIGH BUILD EPOXY  
 BASE: 5.5 TO 9.0 MIL WET FILM THK, 4.0 TO 6.0 MIL DRY  
 FILM THK - TNEMEC SERIES 1075 POLYURETHANE ENAMEL  
 TOP: 3.5 TO 5.0 MIL WET FILM THK, 2.0 TO 3.0 MIL DRY  
 FILM THK - TOP COAT COLOR: ANSII 61 GRAY  
 4) 5 PSI NITROGEN CHARGE.  
 5) STATIC HEAD = 0.11 PSIG.  
 6) MARK: OOFGS-TNK 111, 121 & 131.

<b>MB-685-B</b>	
FOR: VERT. FUEL GAS TANK	REV. 8-22-13
SURFACE AREA = 347.9 SQ. FT.	DATE: 1-2-13
FOR NONCORROSIVE SERVICE	
UW-21 (b)	
INSIDE: UNPAINTED & DEHYDRATED	
OUTSIDE: SEE NOTE: 3	
BY: J.G./C.J.	SCALE: 1/2"=12"
<b>ROY E. HANSON JR. MFG.</b>	
1600 E. WASHINGTON BLVD.	
LOS ANGELES, CA 90021	