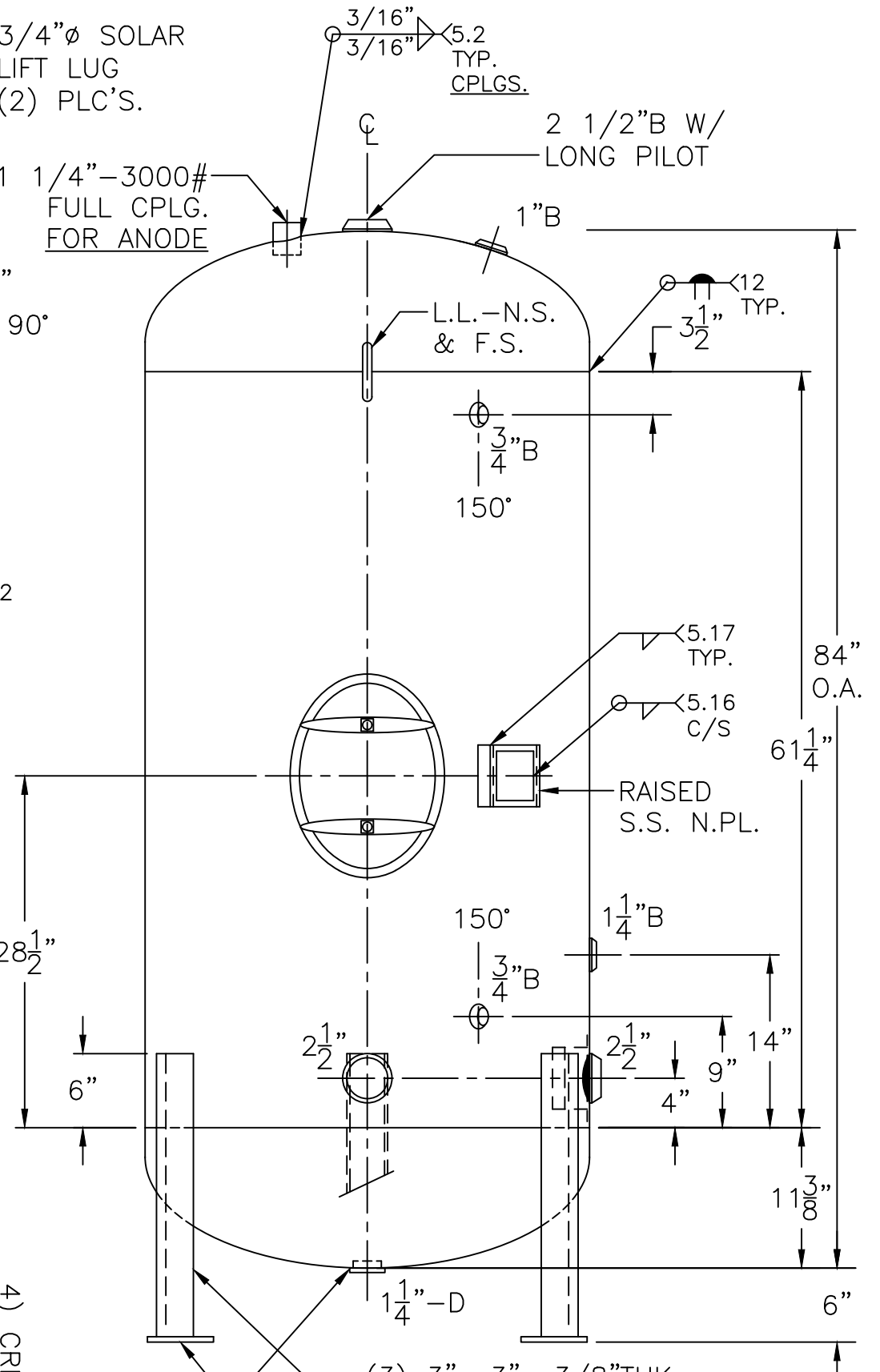
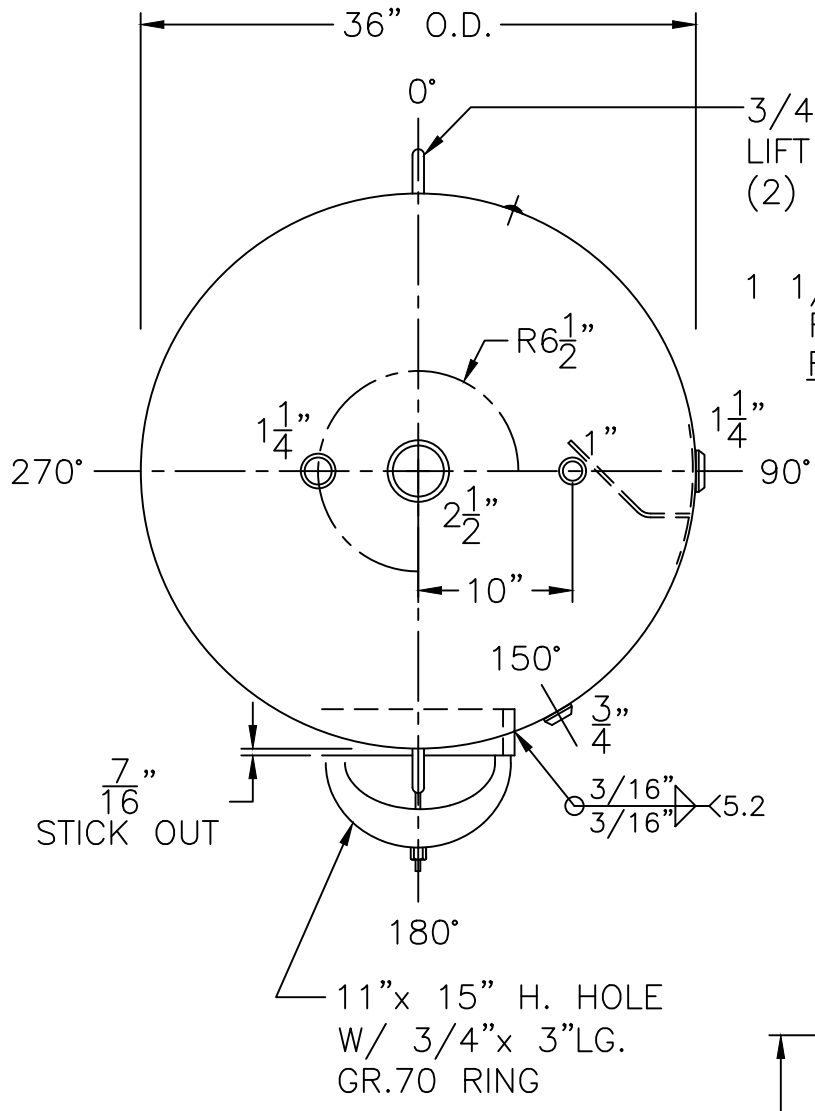
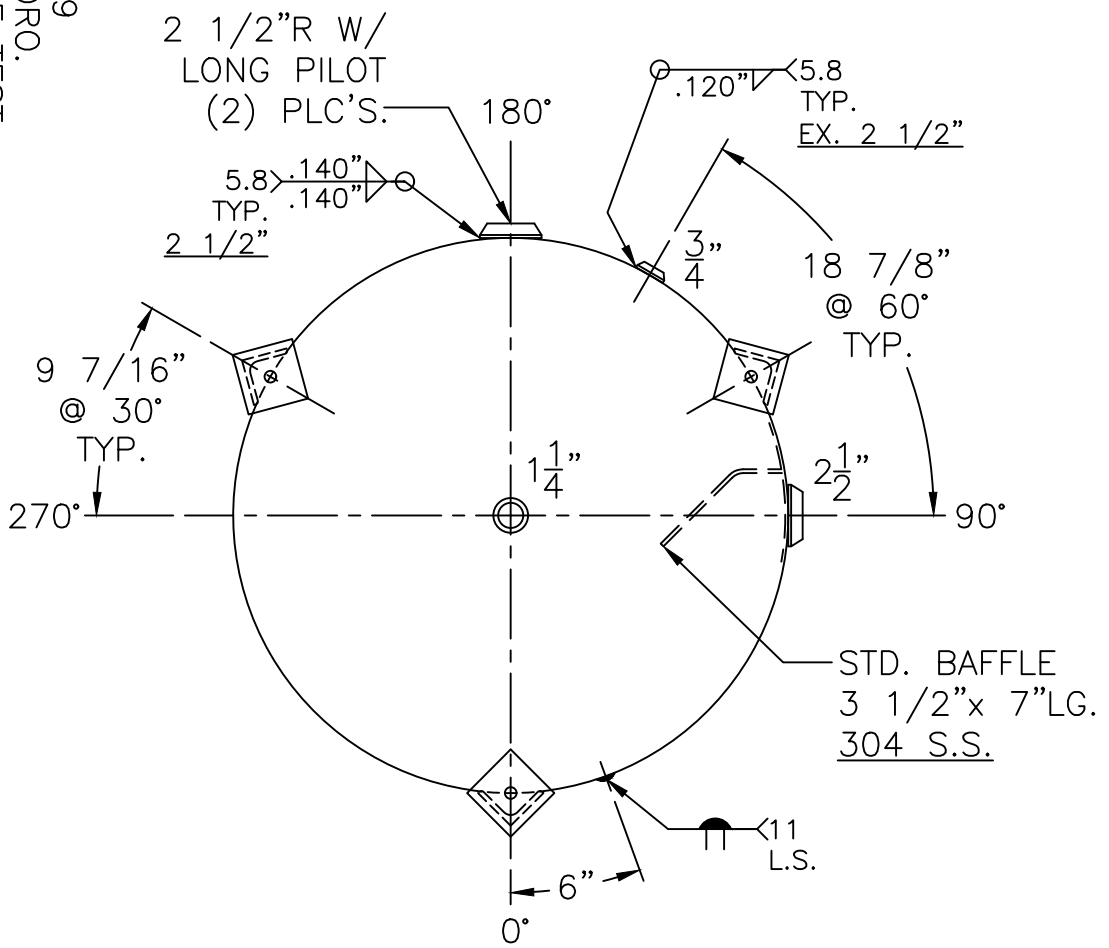


JOB No. _____
 DATE: _____



(3) 3" x 3" x 3/8" THK. x 22 15/16" LG. ANGLE LEGS
 (3) 4" x 4" x 7/16" THK. PAD W/ 7/8" ϕ HOLE



NOTE: 1) SHIP LOOSE W/ (1) 1 5/16" x 60" LG. FLEX. MAG. ANODE.
 2) 4-1-04 PROOF TEST.
 3) 240 PSIG. HYDRO.
 4) CRN #1624.789

SHELL / HEADS		M.A.W.P. 160 PSIG. @ 210 °F	
.166" SA-414-G		ASME SECTION IV 2019	
JOGGLE		X-RAY: RT-NO / H.L.W.	
.189" SA-414-G 2:1 S.E.		GALLONS: 335 WT. 677 LBS.	
SERIAL NO.		N.B.	
GS-36-335-V		FOR: HANSON STANDARD	
DATE: 5-29-90		VERT. WATER TANK	
REV: 2-21-20		SURFACE AREA = 70.6 SQ. FT.	
FOR: HANSON STANDARD		INSIDE: GLASS LINED	
DATE: 5-29-90		(5 MILS MIN.)	
REV: 2-21-20		OUTSIDE: PRIME	
DATE: 5-29-90		SF: 1.5 LEG-ZONE 4-15 KM.	
REV: 2-21-20		CAD "B" SIZE UNDER STD. SERIES	
DATE: 5-29-90		BY: J.A. SCALE: 1" = 12"	
REV: 2-21-20		ROY F. HANSON JR. MFG.	
DATE: 5-29-90		LOS ANGELES, CA 90021	