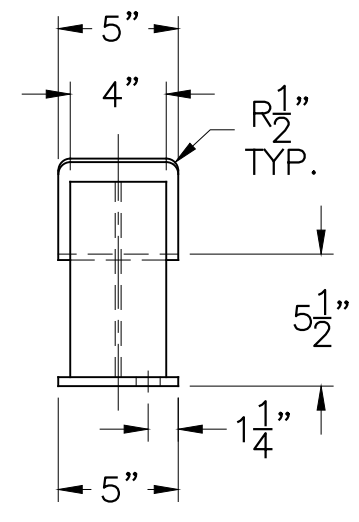
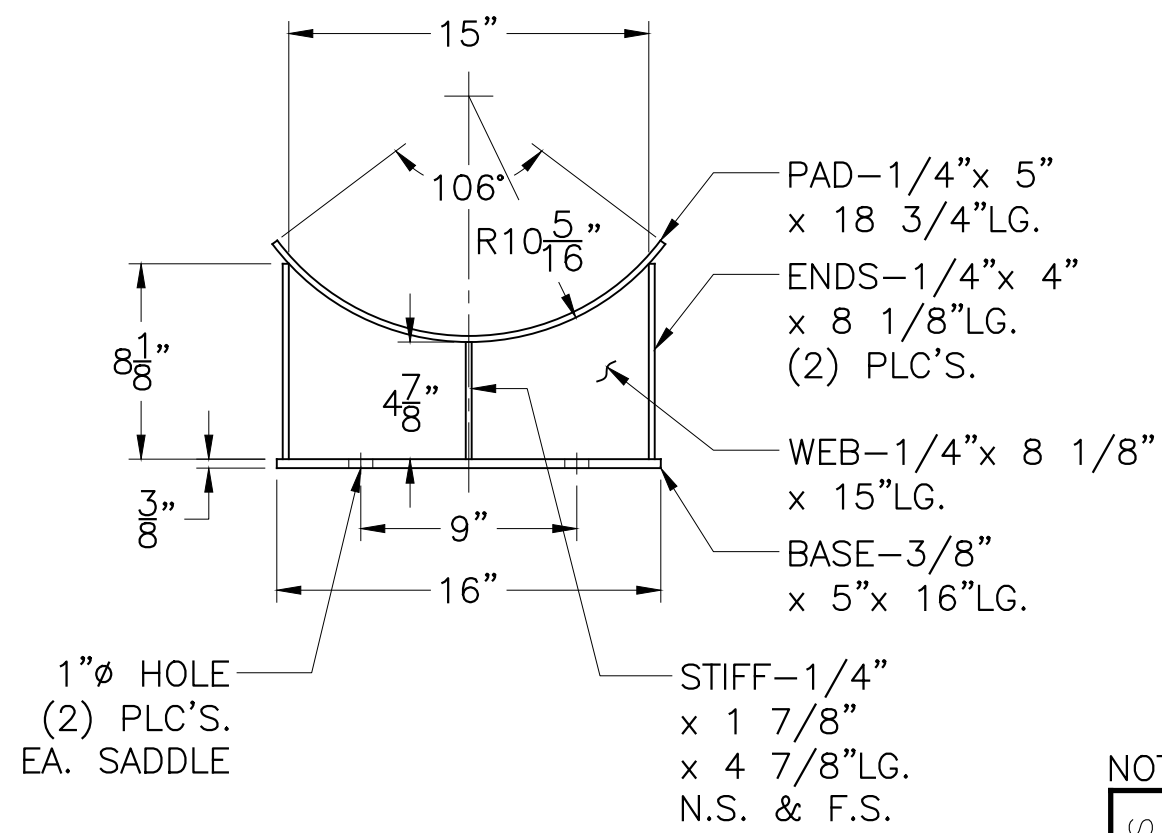
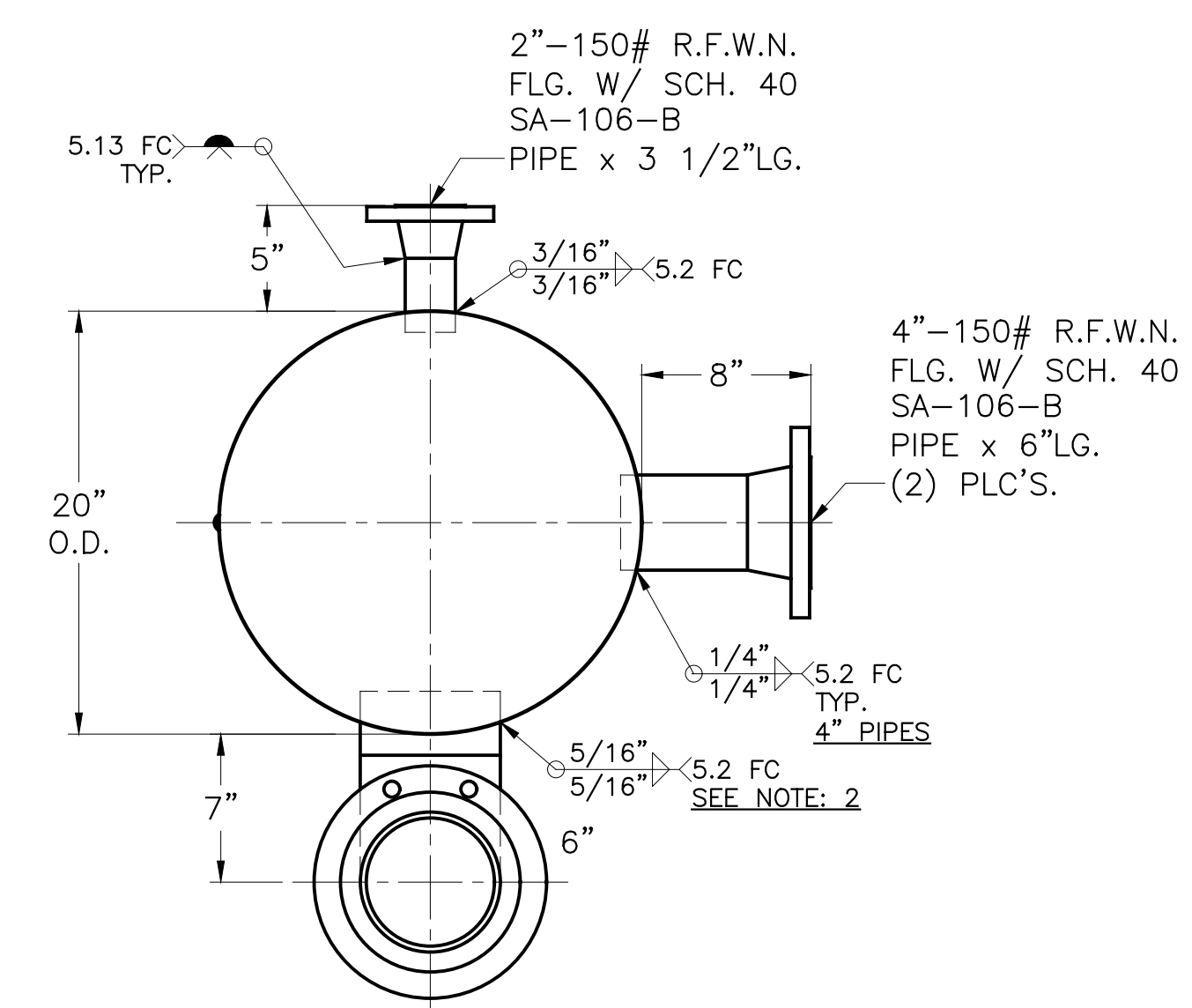
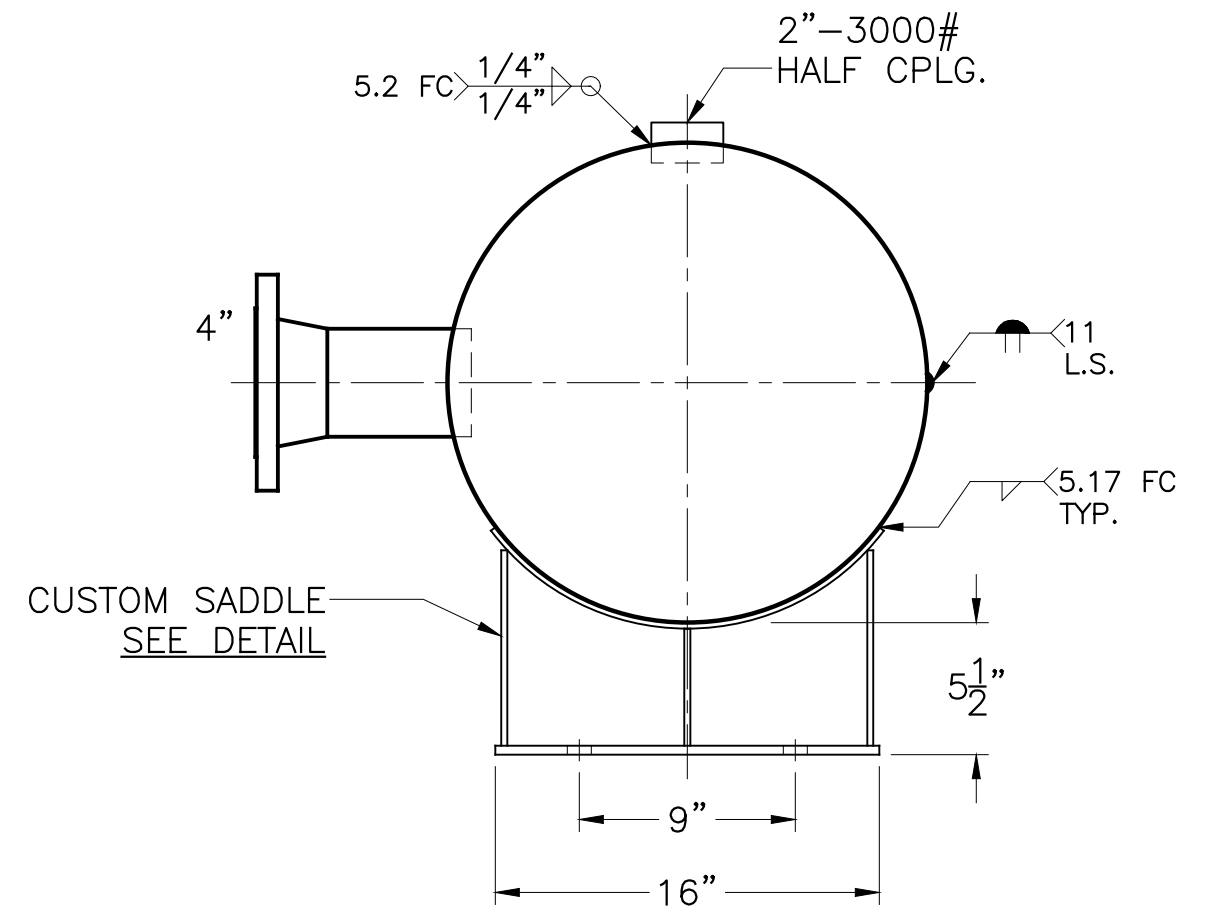
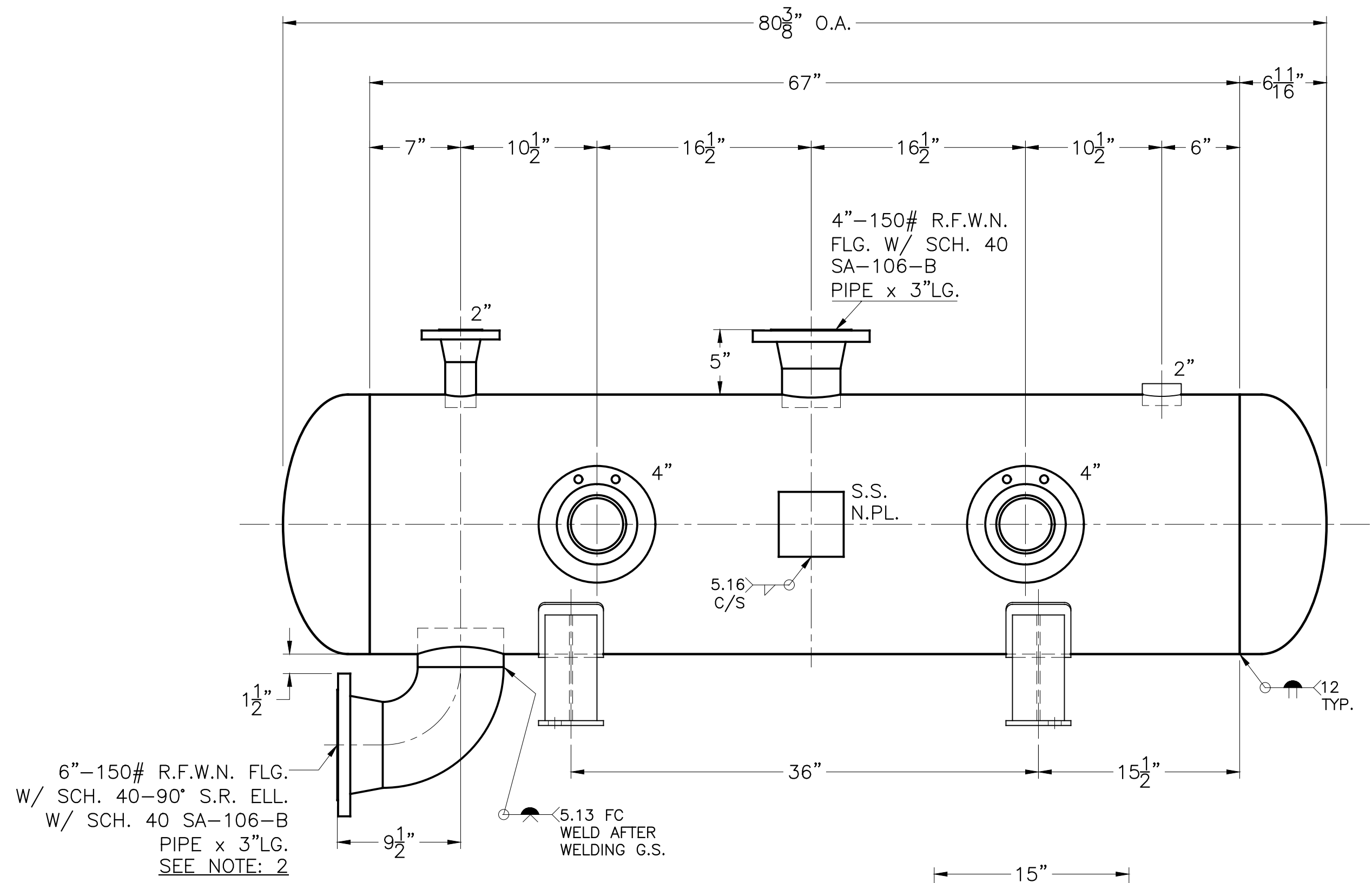


DATE	BY
12-2-15	JG
12-15-15	JG



- 2) FIRST: WELD 6" PIPE TO SHELL
SECOND: WELD HEAD TO SHELL GIRTH SEAM
THIRD: INSTALL 6" ELBOW WITH FLANGE AFTER WELDING G.S.

NOTE: 1) HYDRO @ 26 PSIG. MIN.

VIEW W/O SUPPORTS

SHELL / HEADS	.375" SA-455 2:1 S.E.	MB-764-C	REV. 12-17-15
			DATE: 12-2-15
		FOR:	
	.375" SA-455	HORIZ. OIL TANK	
		FOR NON-CORROSIVE SERVICE	
		SURFACE AREA = 36.7 SQ. FT.	
		INSIDE: UNPAINTED	
M.A.W.P.	15 PSIG. @ 180 °F	OUTSIDE: PRIME	
M.D.M.T.	-20 °F @ 15 PSIG.		
ASME. SECTION VIII	DIV. 1, 2013		
X-RAY:	RT-NO		
GALLONS:	96	WT. 795 LBS.	BY: E.S. / B.C. SCALE: 1/8"=1"
SERIAL NO.			ROY E. HANSON JR. MFG.
N.B.			LOS ANGELES, CA 90021