

PIPE SUPPORT PLATE DTL.
(BLAST & ZINC PRIME SKIRT)

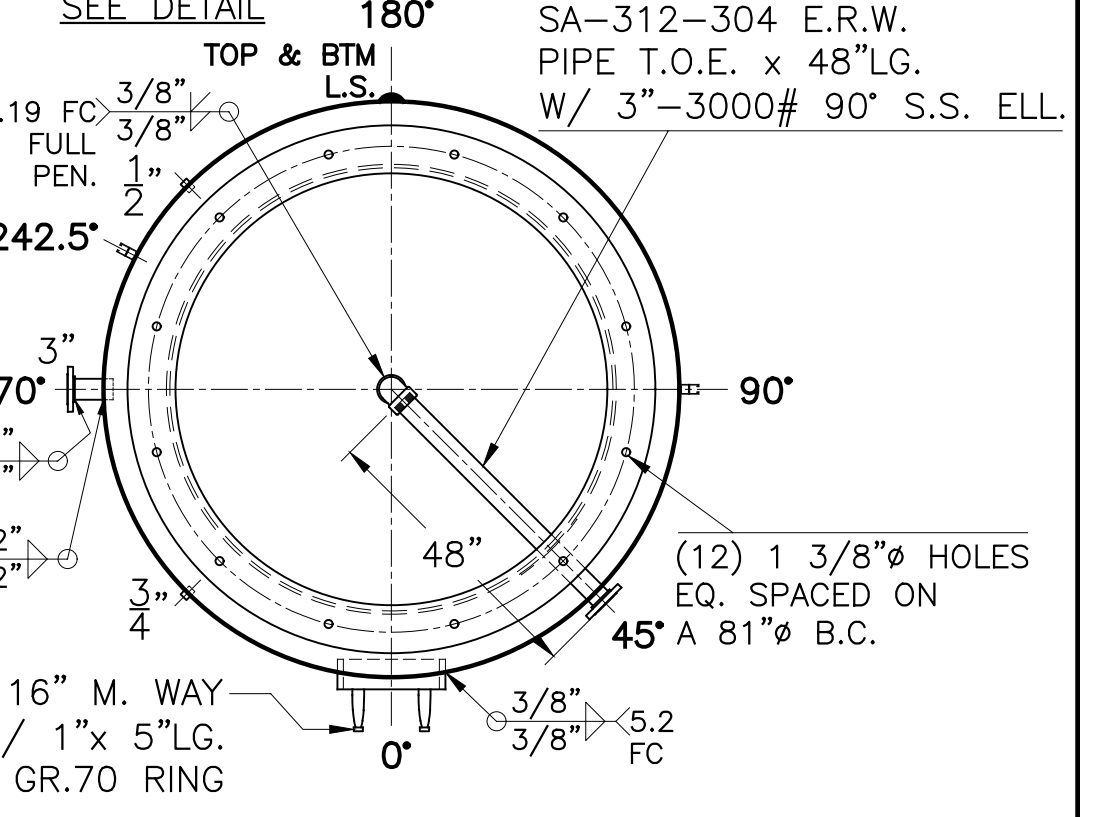
DATE	BY
2-10-16	JG
2-24-16	JG
3-2-16	JG
3-8-16	JG

SHELL / HEADS	
.375" SA-455	2:1 S.E.
(.356" MIN.)	
M.A.W.P. 125	PSIG. @ 180 °F
M.D.M.T. -20	°F @ 125 PSIG
ASME SECTION VIII DIV. 1, 2015	
X-RAY: RT-4 SPOT L.S. ONLY	
GALLONS: 7500	WT. 11,800 LBS.
SERIAL NO.	
N.B.	

WO-724-B	
FOR: VERT. HOT WATER TANK	REV. 3-8-16
SURFACE AREA = 583.4 SQ. FT.	DATE: 10-9-15
INSIDE: EPOXY LINED	
OUTSIDE: PRIME & R-16	
BY: E.S. / R.V.	SCALE: 3/8"=12"
ROY E. HANSON JR. MFG.	
LOS ANGELES, CA 90021	

- NOTE: 1) HYDRO @ 163 PSIG. MIN.
 2) ALL FNPT'S SA-182-304 S.S.
 3) THREAD PROTECT 3" PIPE & 3/4" NIPPLES.
 4) USE TEMPLATE MADE FOR THE BASE BOLT HOLES AND SHIP TEMPLATE WITH TANK.
 5) DO NOT PAINT N.P.L.

12"x 16" M. WAY W/ 1"x 5"LG. GR.70 RING



3"-150# R.F.S.O. C.S. FLG. W/ SCH. 40 SA-312-304 E.R.W. PIPE T.O.E. x 48"LG. W/ 3"-3000# 90° S.S. ELL.

1 1/4"THK.-BASE x 72" I.D. x 88" O.D.

5/8"THK.-SKIRT

1 1/4"THK.-BASE x 72" I.D. x 88" O.D.

CONT. WELD OUTSIDE ONLY

3 1/16" Ø HOLE

RAISED S.S. N.P.L. F.S.

2"LG. FILLET WELD TOP & BTM.

1/2"-3000# FULL CPLG.

3" PIPE SKIRT O.D.

3/4"THK. L.LUG PER: WO-724-B-1A (4) PLC'S.

12"LG. S.S. UNISTRUT (4) PLC'S.

3"-150# R.F.S.O. C.S. FLG. W/ SCH. 40 SA-312-304 E.R.W. PIPE x 7 5/8"LG. (4) PLC'S.

4"-150# FULL CPLG.

5.2 3/8" C/S TYP.

5.17 FC 3/8" TYP.

5.2 3/8" C/S

3"-150# R.F.S.O. C.S. FLG. W/ SCH. 40 SA-312-304 E.R.W. PIPE x 7 5/8"LG. (4) PLC'S.