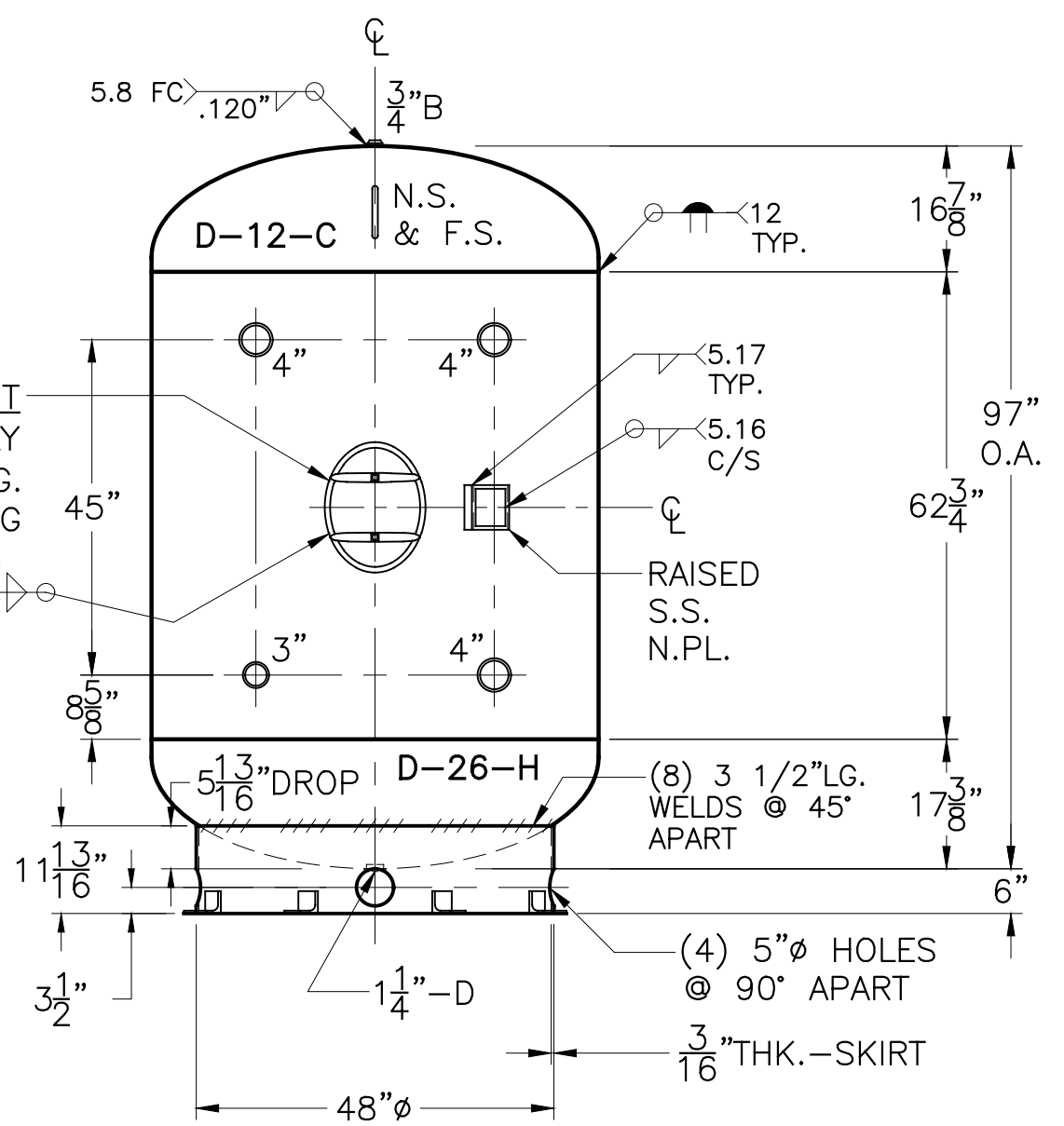
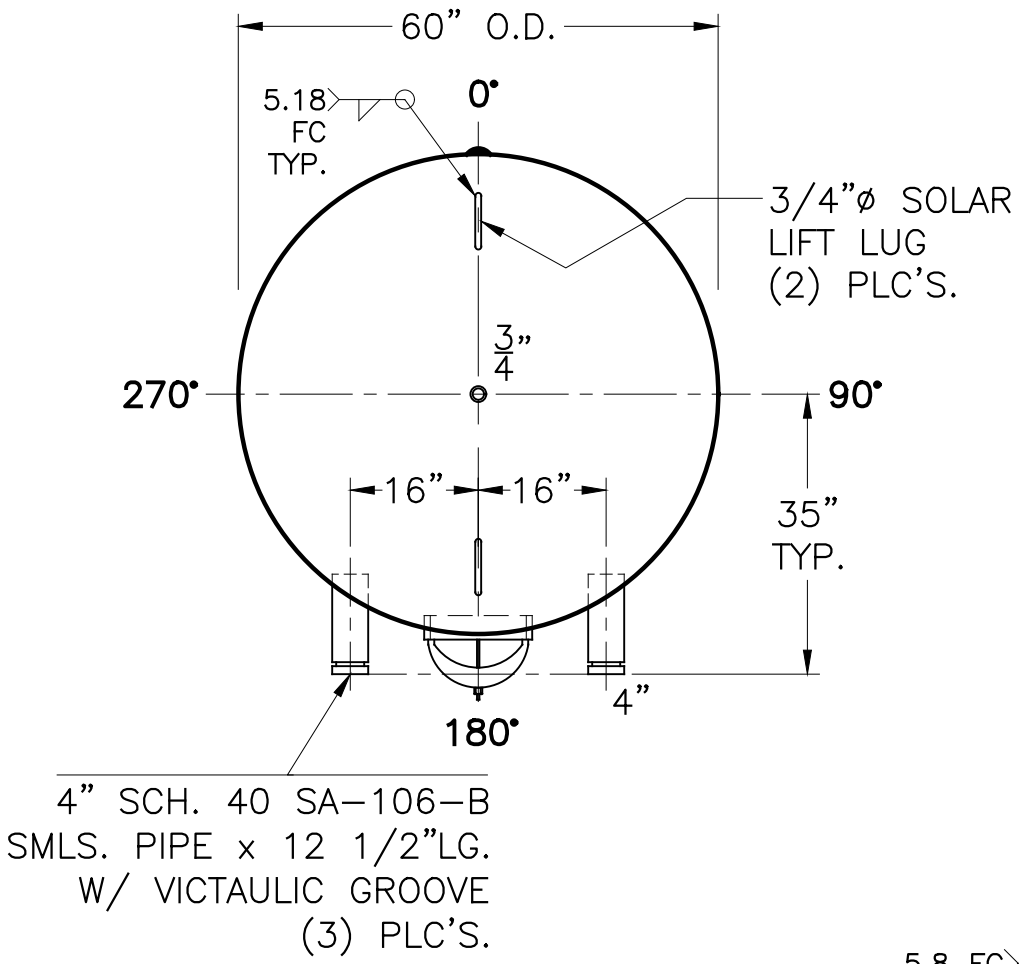


| DATE     | BY |
|----------|----|
| 12-17-15 | JG |
| 12-28-15 | JG |
| 12-29-15 | JG |
| 12-30-15 | RH |
| 12-31-15 | JG |



11/16" STICK OUT  
12" x 16" M. WAY  
W/ 3/4" x 3" LG.  
GR.70 RING

NOTE: 1) TAG: CST-2  
2) HYDRO @ 163 PSIG. MIN.

3" SCH. 40 SA-106-B SMLS. PIPE x 12 1/2" LG. W/ VICTAULIC GROOVE

(8) 3" x 3" x 3/8" THK. x 3" LG. ANGLE CLIPS W/ 7/8"  $\phi$  HOLE ON 51"  $\phi$  B.C.

| SHELL / HEADS                  |               |
|--------------------------------|---------------|
| .252" SA-455                   | 2:1 S.E.      |
| (.226" MINIMUM)                |               |
| M.A.W.P. 125 PSIG. @ 250 °F    |               |
| M.D.M.T. -20 °F @ 125 PSIG.    |               |
| ASME SECTION VIII DIV. 1, 2015 |               |
| X-RAY: RT-NO                   |               |
| GALLONS: 1040                  | WT. 1920 LBS. |
| SERIAL NO.                     |               |
| N.B.                           |               |

| TANK "B"                     |                   |
|------------------------------|-------------------|
| WO-790-B                     | REV. 12-31-15     |
|                              | DATE: 12-17-15    |
| FOR: VERT. WATER/GLYCOL TANK |                   |
| SURFACE AREA = 150.0 SQ. FT. |                   |
| INSIDE: UNPAINTED            |                   |
| OUTSIDE: PRIME & R-16        |                   |
| BY: E.S. / C.J.              | SCALE: 1/2" = 12" |
| ROY E. HANSON JR. MFG.       |                   |
| LOS ANGELES, CA 90021        |                   |

