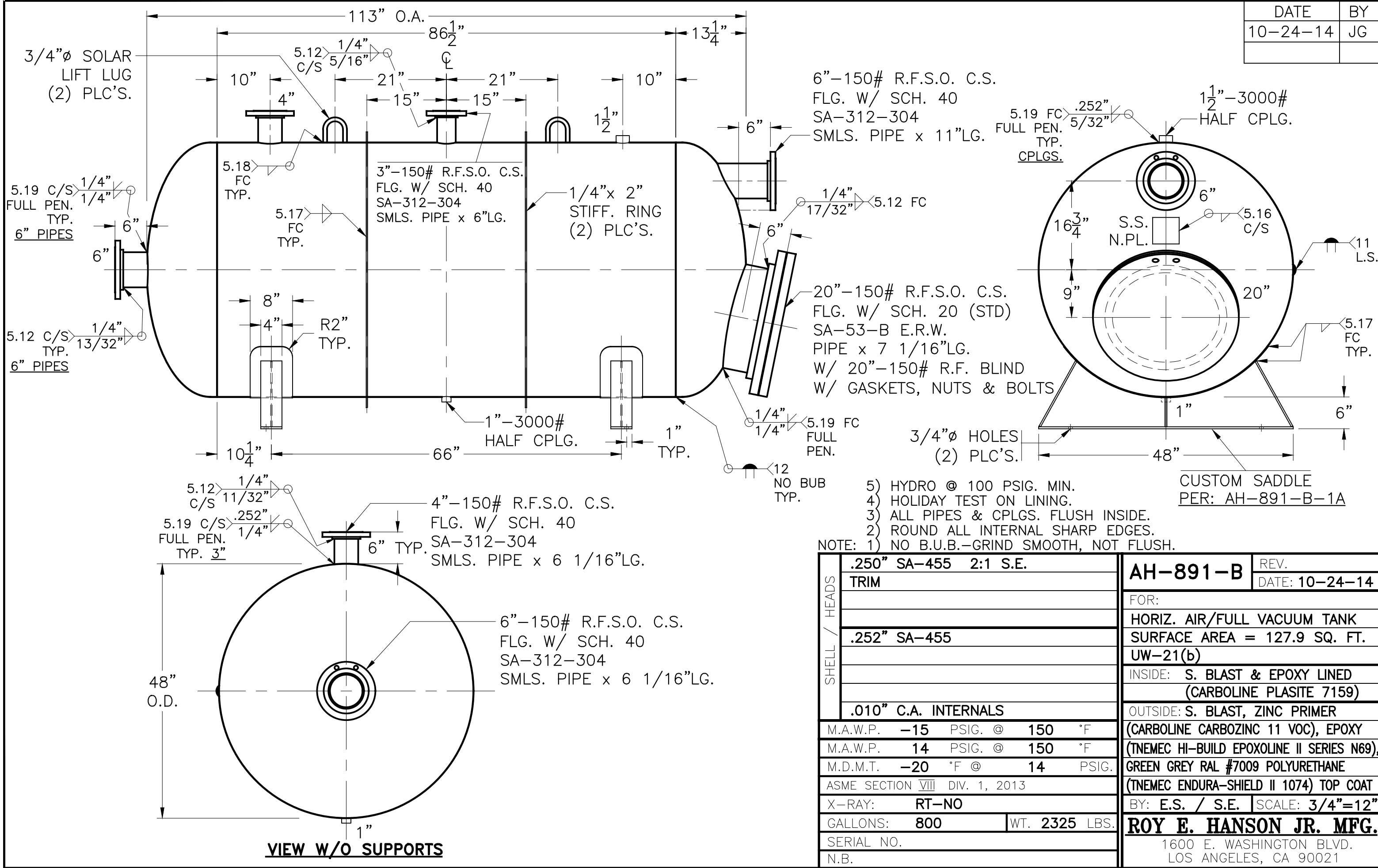


DATE	BY
10-24-14	JG



6"-150# R.F.S.O. C.S.  
 FLG. W/ SCH. 40  
 SA-312-304  
 SMLS. PIPE x 11"LG.

1 1/2"-3000#  
 HALF CPLG.  
 5.19 FC  
 FULL PEN.  
 TYP.  
 CPLGS.

3"-150# R.F.S.O. C.S.  
 FLG. W/ SCH. 40  
 SA-312-304  
 SMLS. PIPE x 6"LG.

1/4"x 2"  
 STIFF. RING  
 (2) PLC'S.

20"-150# R.F.S.O. C.S.  
 FLG. W/ SCH. 20 (STD)  
 SA-53-B E.R.W.  
 PIPE x 7 1/16"LG.  
 W/ 20"-150# R.F. BLIND  
 W/ GASKETS, NUTS & BOLTS

3/4"Ø HOLES  
 (2) PLC'S.

CUSTOM SADDLE  
 PER: AH-891-B-1A

- 5) HYDRO @ 100 PSIG. MIN.
- 4) HOLIDAY TEST ON LINING.
- 3) ALL PIPES & CPLGS. FLUSH INSIDE.
- 2) ROUND ALL INTERNAL SHARP EDGES.
- NOTE: 1) NO B.U.B.-GRIND SMOOTH, NOT FLUSH.

SHELL / HEADS	.250" SA-455 2:1 S.E.	
	TRIM	
	.252" SA-455	
	.010" C.A. INTERNALS	
	M.A.W.P.	-15 PSIG. @ 150 °F
	M.A.W.P.	14 PSIG. @ 150 °F
	M.D.M.T.	-20 °F @ 14 PSIG.
	ASME SECTION VIII DIV. 1, 2013	
	X-RAY: RT-NO	
	GALLONS:	800 WT. 2325 LBS.
SERIAL NO.		
N.B.		

AH-891-B	REV.
	DATE: 10-24-14
	FOR:
	HORIZ. AIR/FULL VACUUM TANK
	SURFACE AREA = 127.9 SQ. FT.
	UW-21(b)
	INSIDE: S. BLAST & EPOXY LINED (CARBOLINE PLASITE 7159)
	OUTSIDE: S. BLAST, ZINC PRIMER (CARBOLINE CARBOZINC 11 VOC), EPOXY (TNEMEC HI-BUILD EPOXOLINE II SERIES N69), GREEN GREY RAL #7009 POLYURETHANE (TNEMEC ENDURA-SHIELD II 1074) TOP COAT
	BY: E.S. / S.E. SCALE: 3/4"=12"
	<b>ROY E. HANSON JR. MFG.</b> 1600 E. WASHINGTON BLVD. LOS ANGELES, CA 90021

