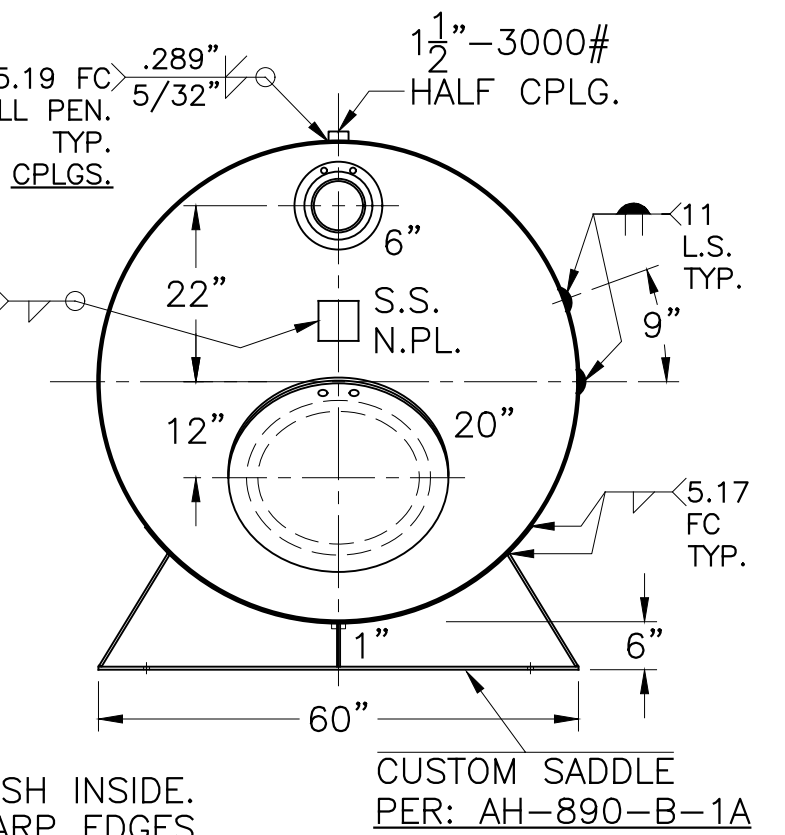
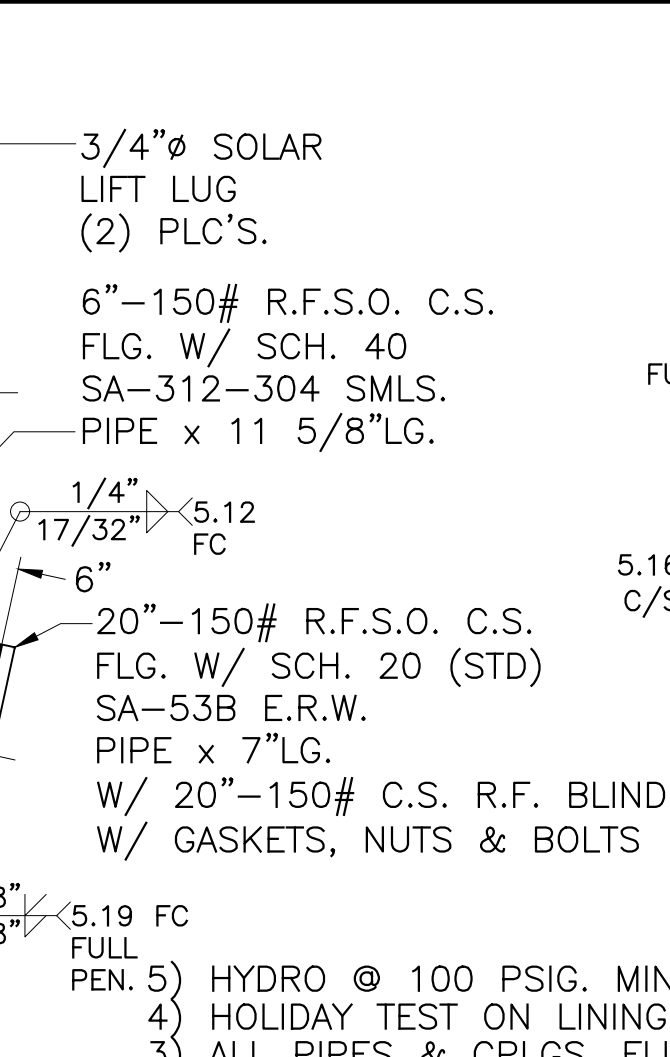
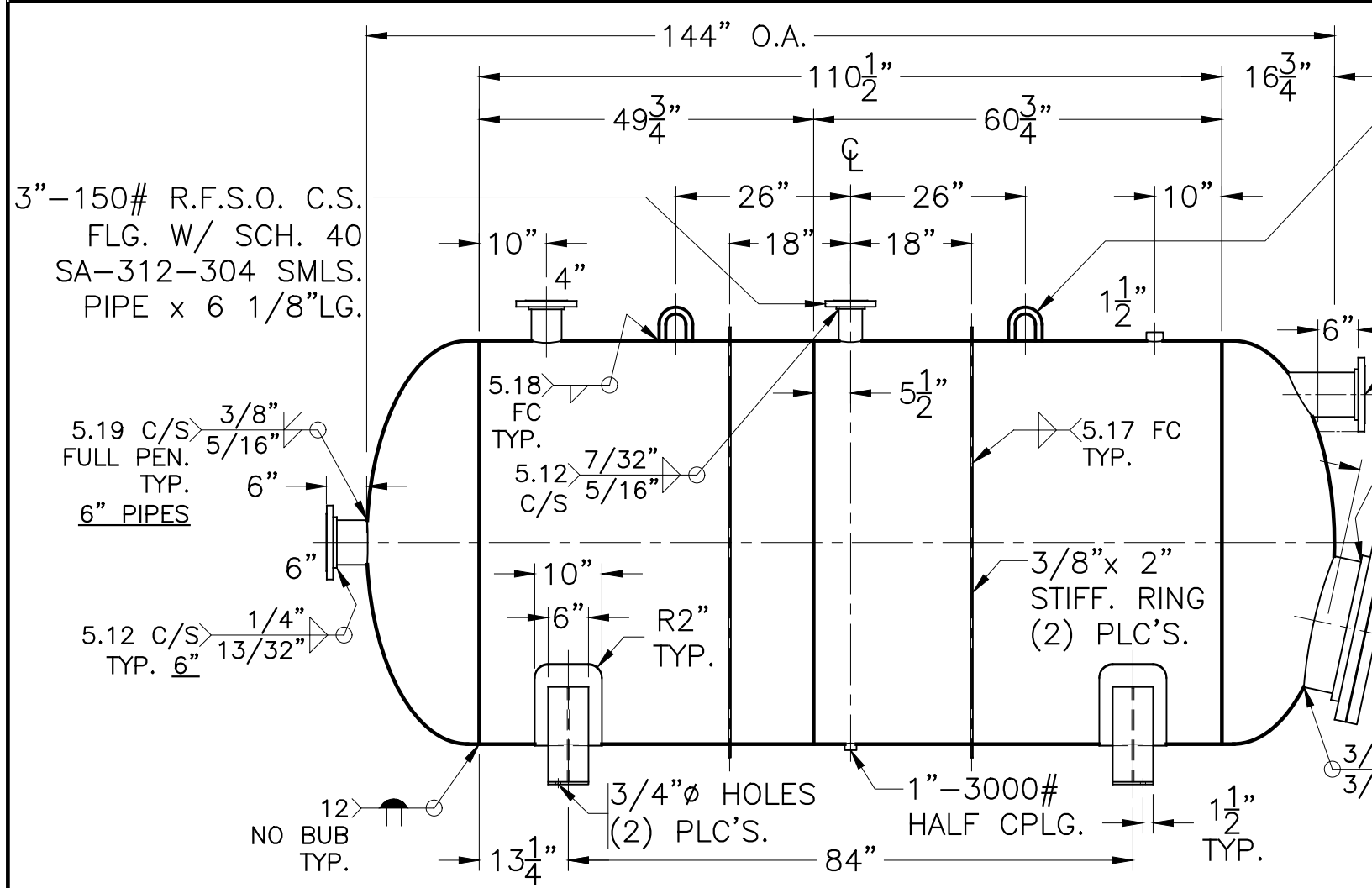
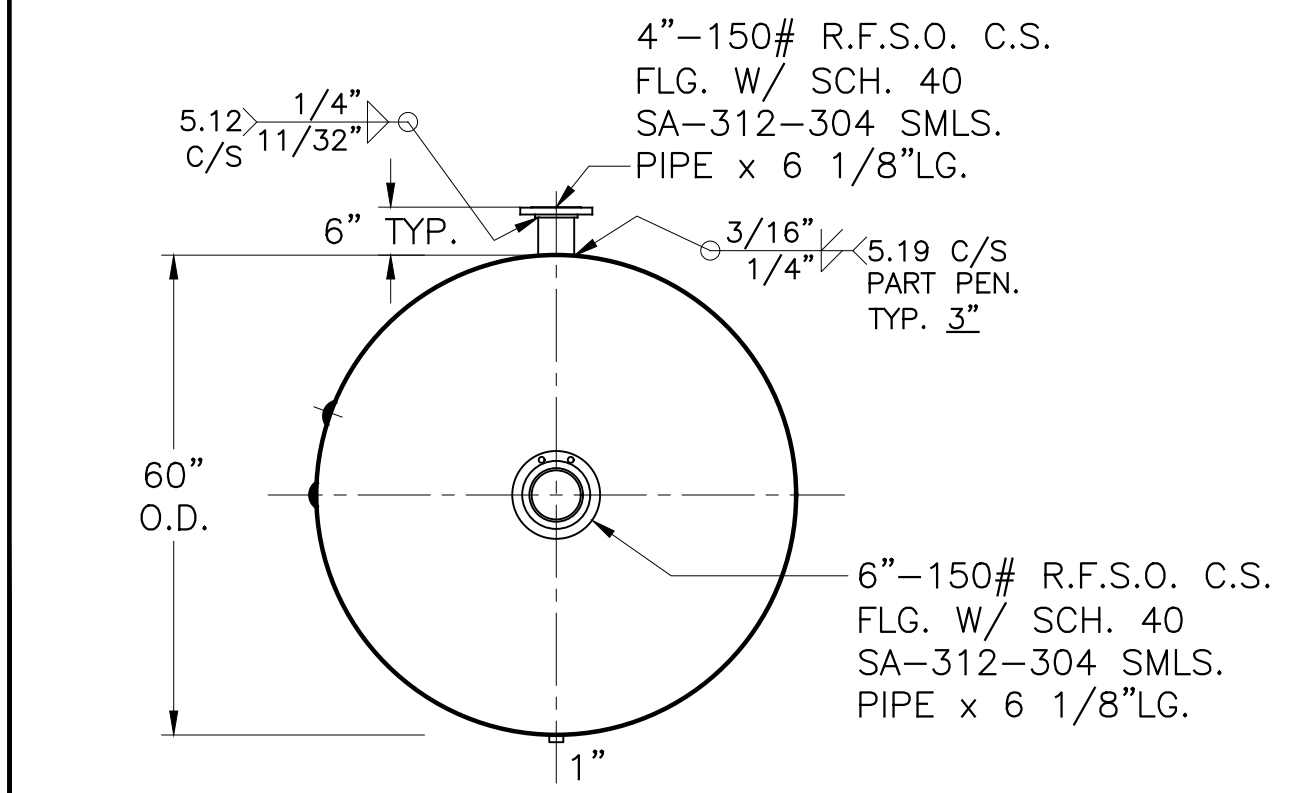


DATE	BY
10-23-14	JG
10-24-14	JG



- NOTE: 1) NO B.U.B.-GRIND SMOOTH, NOT FLUSH.
2) ROUND ALL INTERNAL SHARP EDGES.
3) ALL PIPES & CPLGS. FLUSH INSIDE.
4) HOLIDAY TEST ON LINING.
5) HYDRO @ 100 PSIG. MIN.



VIEW W/O SUPPORTS

SHELL / HEADS	.375" SA-455 2:1 S.E. (.370" MIN.)
	TRIM
	.289" SA-455
	.010" C.A.-INTERNAL FOR HEAD & SHELL
M.A.W.P.	-15 PSIG. @ 150 °F
M.A.W.P.	14 PSIG. @ 150 °F
M.D.M.T.	-20 °F @ 14 PSIG.
ASME. SECTION VIII DIV. 1, 2013	
X-RAY: RT-NO	
GALLONS:	1600
WT.	4002 LBS.
SERIAL NO.	
N.B.	

AH-890-B	REV. 10-24-14
	DATE: 10-23-14
FOR:	
HORIZ. AIR/FULL VACUUM TANK	
SURFACE AREA = 203.4 SQ. FT.	
UW-21(b)	
INSIDE: S. BLAST & EPOXY LINED (CARBOLINE PLASITE 7159)	
OUTSIDE: S. BLAST, ZINC PRIMER (CARBOLINE CARBOZINC 11 VOC), EPOXY (TNEMEC HI-BUILD EPOXOLINE II SERIES N69), GREEN GREY RAL #7009 POLYURETHANE (TNEMEC ENDURA-SHIELD II 1074) TOP COAT	
BY: E.S. / STEVE	SCALE: 1/2" = 12"
ROY E. HANSON JR. MFG.	
1600 E. WASHINGTON BLVD. LOS ANGELES, CA 90021	