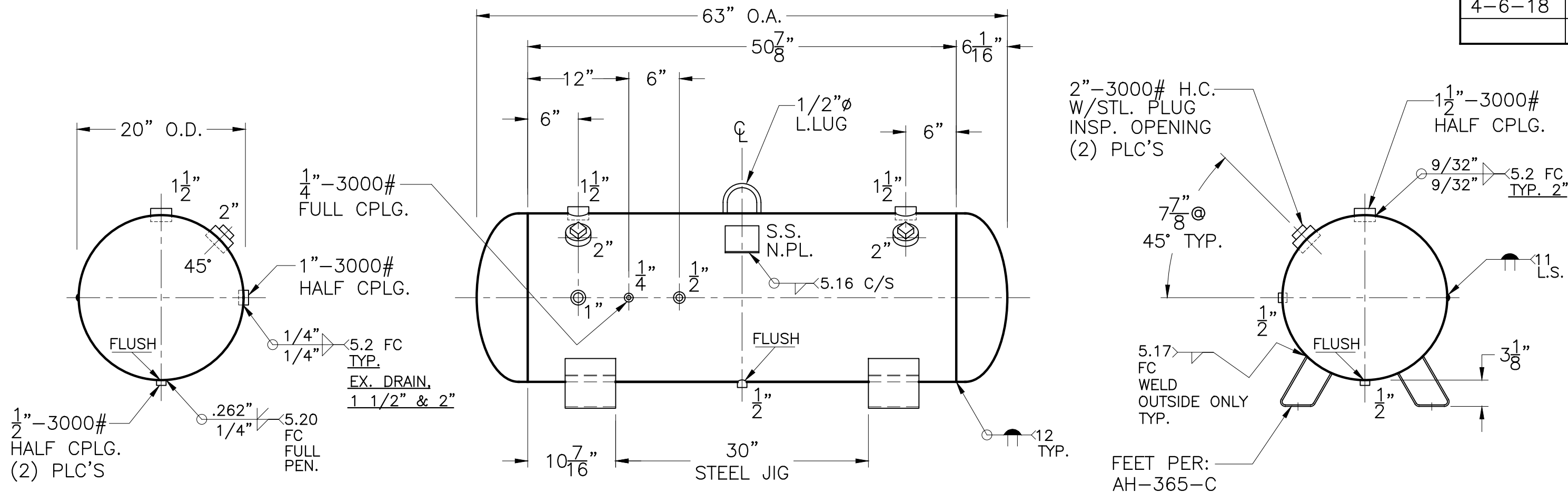


DATE	BY
4-6-18	JG



VIEW W/O SUPT'S

NOTE: 1) HYDRO @ 520 PSIG. MIN.

SHELL / HEADS	.200" SA-455 2:1 S.E.	AH-724-B	REV. 4-6-18	
	JOGGLE		DATE: 1-26-11	
	.262" SA-612	FOR:	HORIZ. COMPRESSED AIR TANK	
		SURFACE AREA = 29.6 SQ. FT.		
M.A.W.P. 400 PSIG. @ 400 °F	INSIDE: UNPAINTED			
M.D.M.T. -20 °F @ 400 PSIG.	OUTSIDE: PRIME			
ASME. SECTION VIII DIV. 1, 2017				
X-RAY: RT-4 SPOT G.S. ONLY				
GALLONS: 80	WT. 350 LBS.	BY: J.G./C.J.	SCALE: 1"=12"	
SERIAL NO.	ROY E. HANSON JR. MFG.			
N.B.	LOS ANGELES, CA 90021			