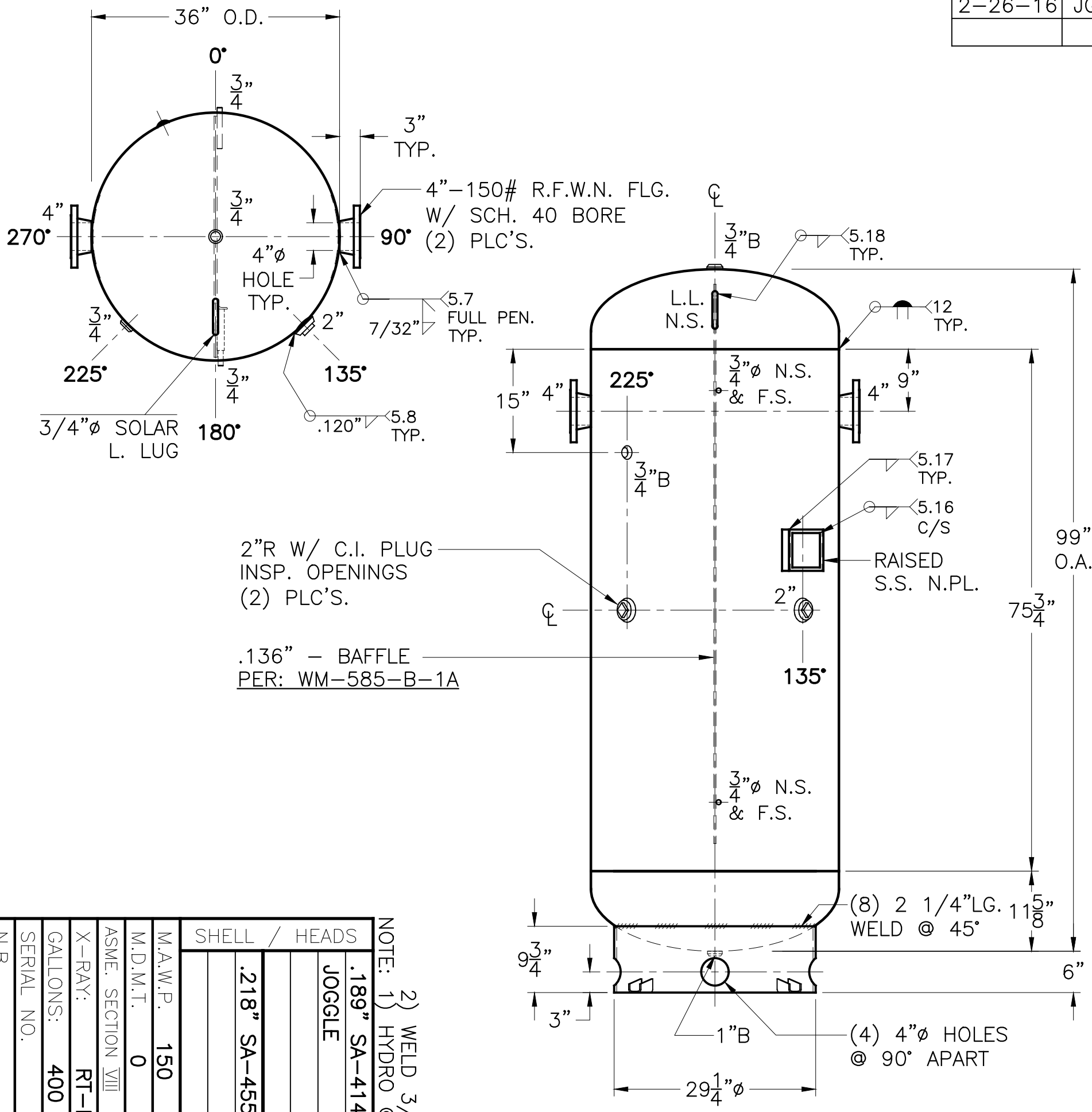


DATE	BY
2-26-16	JG



4"-150# R.F.W.N. FLG. W/ SCH. 40 BORE (2) PLC'S.

5.7 FULL PEN. TYP.

5.8 TYP.

3/4" SOLAR L. LUG

2"R W/ C.I. PLUG INSP. OPENINGS (2) PLC'S.

.136" - BAFFLE PER: WM-585-B-1A

3/4" ROUND BAR 304 S.S. x 6" LG. (2) PLC'S. PER: WM-191-B DETAIL

1/4" THK. CLIPS PER MA-395-B (4) PLC'S. W/ 9/16" HOLE ON 32 3/8" B.C.; WELD OUTSIDE VERT. EDGE OF CLIP ONLY

3/4" ROUND BAR SA-36 x 6" LG. (2) PLC'S.

NOTE: 1) WELD 3/4" ROUND BARS TO SHELL AFTER HEADS ARE IN PLACE. 2) HYDRO @ 195 PSIG. MIN.

SHELL / HEADS	
JOGGLE	.189" SA-414-G 2:1 S.E.
	.218" SA-455
M.A.W.P.	150 PSIG. @ 200 °F
M.D.M.T.	0 °F @ 150 PSIG.
ASME. SECTION VIII	DIV. 1, 2015
X-RAY:	RT-NO
GALLONS:	400
WT.	972 LBS.
SERIAL NO.	
N.B.	
FOR: VERT. CHILLED WATER TANK	
SURFACE AREA = 83.1 SQ. FT.	
INSIDE: UNPAINTED	
OUTSIDE: S. BLAST & PRIME	
BY: E.S. / R.V.	SCALE: 3/4"=12"
ROY E. HANSON JR. MFG.	
LOS ANGELES, CA 90021	
WM-585-B	REV. 2-26-16
	DATE: 1-28-09