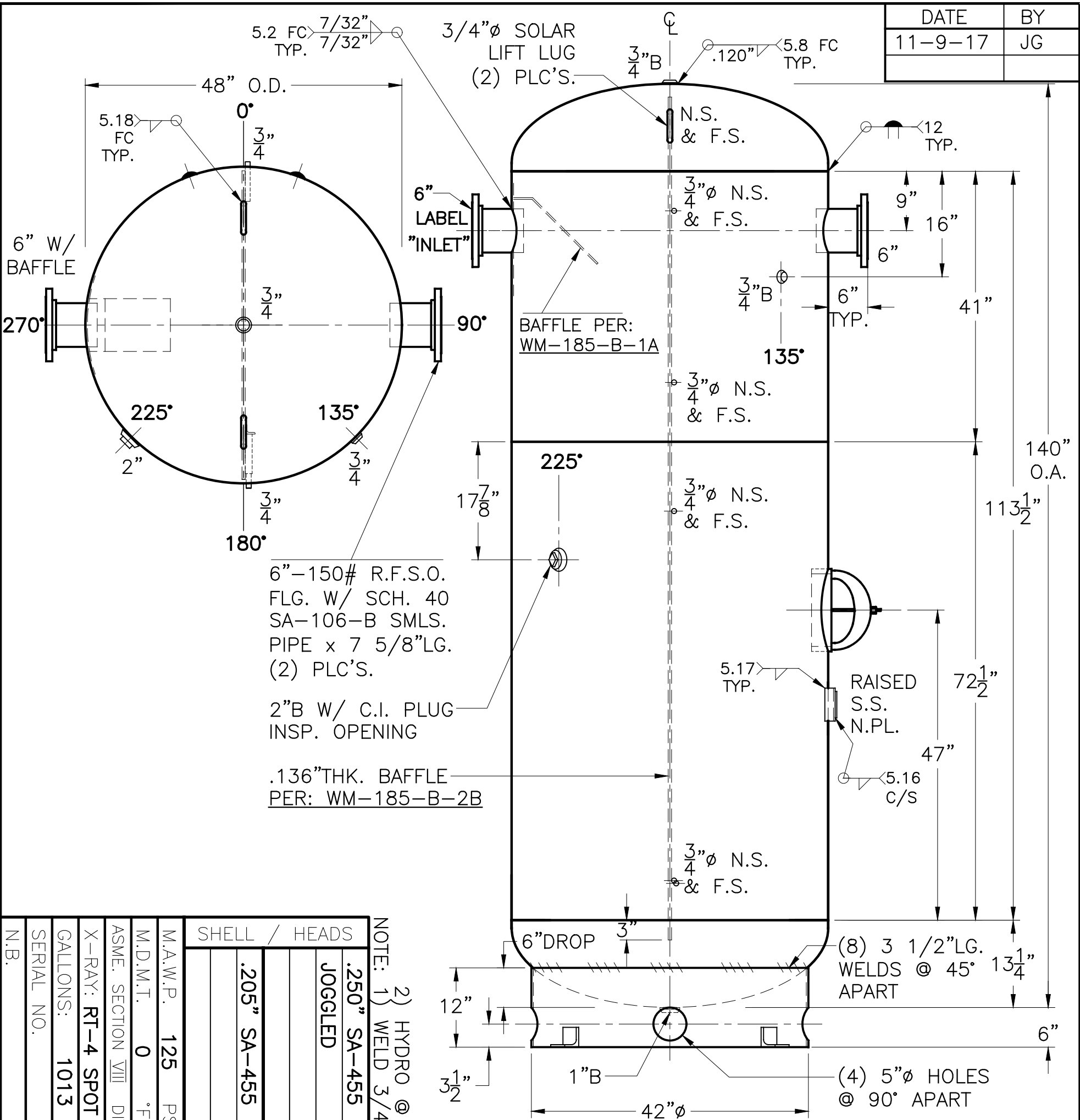


DATE	BY
11-9-17	JG



6"-150# R.F.S.O. FLG. W/ SCH. 40 SA-106-B SMLS. PIPE x 7 5/8" LG. (2) PLC'S.

2"B W/ C.I. PLUG INSP. OPENING

.136" THK. BAFFLE PER: WM-185-B-2B

SHELL / HEADS	.250" SA-455 2:1 S.E.	
	JOGGLED	
M.A.W.P.	125 PSIG. @	200 °F
M.D.M.T.	0 °F @	125 PSIG.
ASME SECTION VIII	DIV. 1, 2015	
X-RAY:	RT-4 SPOT .205" L.S. ONLY	
GALLONS:	1013	WT. 2032 LBS.
SERIAL NO.		
N.B.		

NOTE: 1) WELD 3/4" Ø ROUND BARS TO SHELL AFTER HEADS ARE IN PLACE.

2) HYDRO @ 163 PSIG. MIN.

FOR:	WM-185-B	REV. 11-9-17
DATE:	1-17-08	
VERT. CHILLED WATER TANK.		
SURFACE AREA = 156.2 SQ. FT.		
INSIDE: UNPAINTED		
OUTSIDE: PRIME		
BY: J.G./R.V.	SCALE: 3/4"=12"	
ROY E. HANSON JR. MFG.		
LOS ANGELES, CA 90021		

