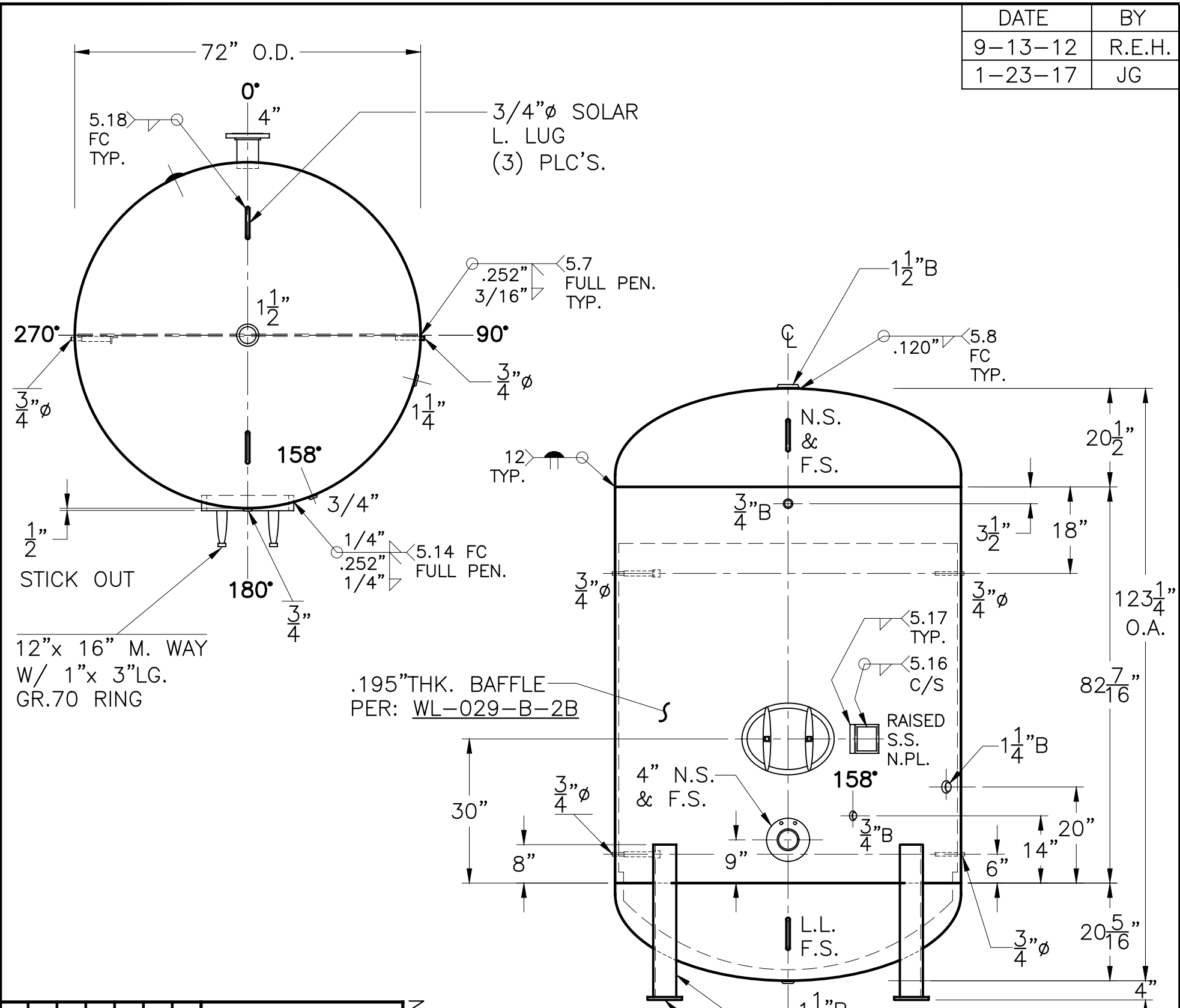


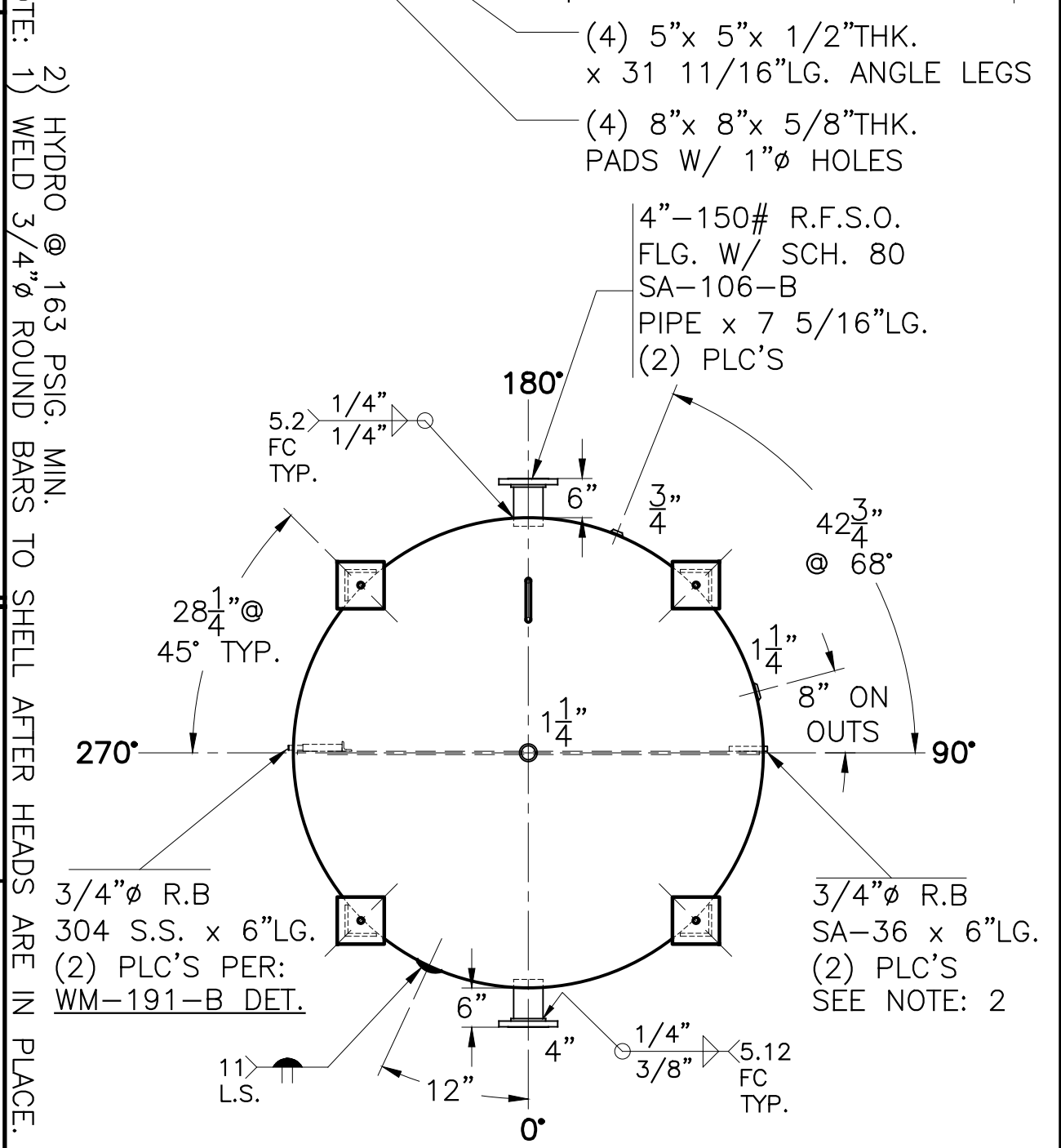
| DATE    | BY     |
|---------|--------|
| 9-13-12 | R.E.H. |
| 1-23-17 | JG     |



| SHELL / HEADS                     |               |
|-----------------------------------|---------------|
| .230" MIN. SA-455                 | 2:1 S.E.      |
| M.A.W.P. 125 PSIG. @ 200 °F       |               |
| M.D.M.T. 0 °F @ 125 PSIG.         |               |
| ASME SECTION VIII DIV. 1, 2015    |               |
| X-RAY: RT-4 SPOT L.S. & HDS. G.S. |               |
| GALLONS: 1950                     | WT. 3272 LBS. |
| SERIAL NO.                        |               |
| N.B.                              |               |

NOTE: 1) WELD 3/4" Ø ROUND BARS TO SHELL AFTER HEADS ARE IN PLACE.  
 2) HYDRO @ 163 PSIG. MIN.

|                               |                   |
|-------------------------------|-------------------|
| <b>WL-029-B</b>               | REV: 1-23-17      |
| DATE: 5-9-05                  |                   |
| FOR: VERT. CHILLED WATER TANK |                   |
| SURFACE AREA = 213.3 SQ. FT.  |                   |
| UW-21 (b)                     |                   |
| INSIDE: UNPAINTED             |                   |
| OUTSIDE: S. BLAST, INORGANIC  |                   |
| ZINC PRIME & R-16             |                   |
| LEG-ZONE 4-15 KM.             |                   |
| BY: E.S. / R.V.               | SCALE: 1/2" = 12" |
| <b>ROY E. HANSON JR. MFG.</b> |                   |
| LOS ANGELES, CA 90021         |                   |



(4) 5"x 5"x 1/2" THK. x 31 11/16" LG. ANGLE LEGS  
 (4) 8"x 8"x 5/8" THK. PADS W/ 1" Ø HOLES

4"-150# R.F.S.O. FLG. W/ SCH. 80 SA-106-B PIPE x 7 5/16" LG. (2) PLC'S

3/4" Ø R.B 304 S.S. x 6" LG. (2) PLC'S PER: WM-191-B DET.

3/4" Ø R.B SA-36 x 6" LG. (2) PLC'S SEE NOTE: 2