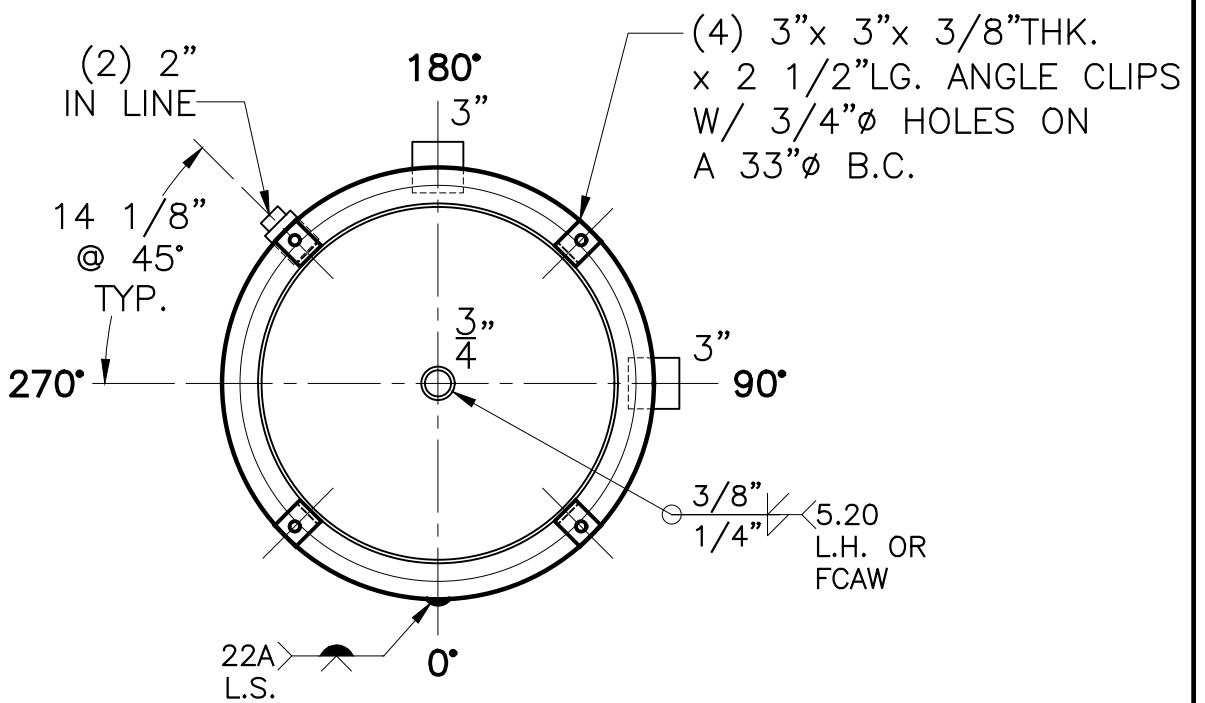
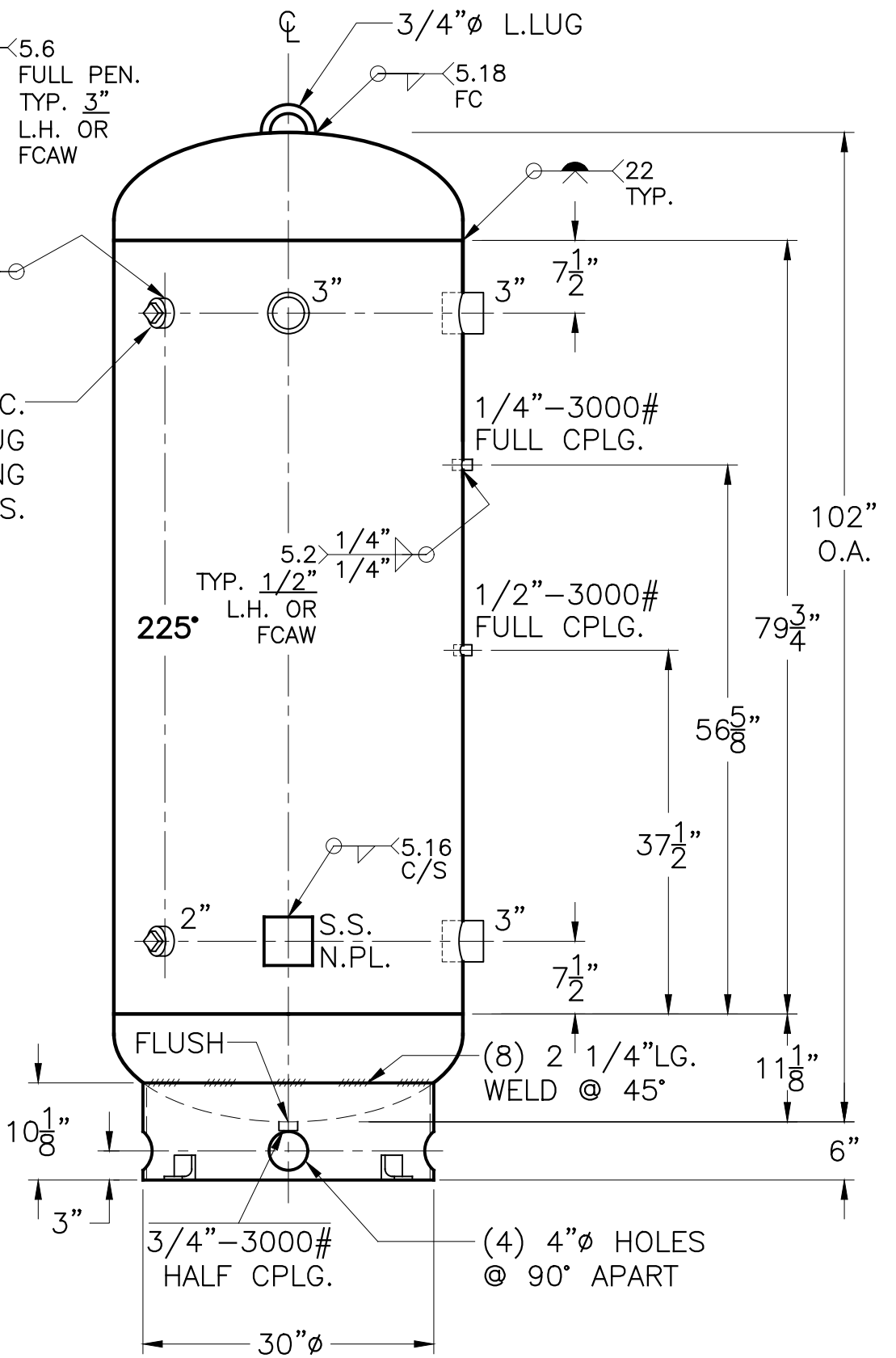


5.2 FC TYP. 2" 5/16" 11/32" 2"

2"-3000# F.C. W/ C. STL. PLUG INSP. OPENING (2) PLC'S.



NOTE: 1) PRE HEAT ALL WELDS TO 150°F.
 2) WELDS TO, OR JOINING SA-612 HAVE WPS W/SUFFIX "B".
 3) HYDRO @ 715 PSIG. MIN.

SHELL / HEADS		.500" SA-516-70 2:1 S.E.		36-VK-400-R		REV. 8-9-18
HOT FORM		(.483" MIN.) BEVEL		FOR: HANSON STANDARD		DATE: 9-9-81
.500" SA-612				VERT. AIR TANK		
				SURFACE AREA = 85.5 SQ. FT.		
				INSIDE: UNPAINTED		
				OUTSIDE: PRIME		
M.A.W.P.	550 PSIG. @ 400 °F			CAD-"B" UNDER "STD"-SERIES		
M.D.M.T.	-20 °F @ 550 PSIG.			BY: J.G.		
ASME SECTION VIII DIV. 1, 2017				SCALE: 3/4"=12"		
X-RAY: RT-4 SPOT L.S. & SPOT G.S.				ROY E. HANSON JR. MFG.		
GALLONS: 400	WT. 1950 LBS.			LOS ANGELES, CA 90021		
SERIAL NO.						
N.B.						