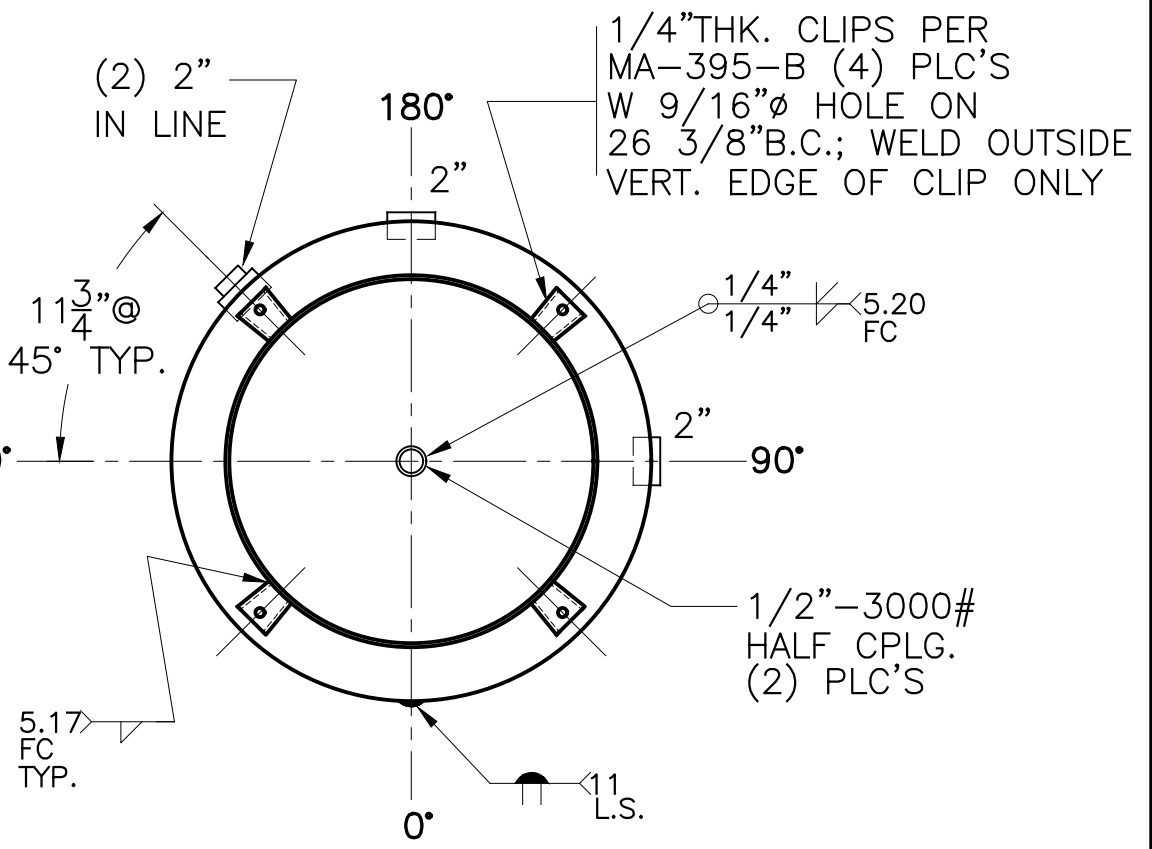


NOTE: 1) HYDRO @ 715 PSIG. MIN.
 2) PRE HEAT BEFORE WELDING TO 150°F



SHELL / HEADS	
.500" SA-516-70 2:1 S.E.	
BEVEL	
HOT FORMING NOT REQUIRED	
UCS 79(D)	
.500" SA-455	
M.A.W.P. 550 PSIG. @ 400 °F	
M.D.M.T. -20 °F @ 550 PSIG.	
ASME. SECTION VIII DIV. 1, 2017	
X-RAY: RT-4 SPOT L.S. ONLY	
GALLONS: 240	WT. 1397 LBS.
SERIAL NO.	
N.B.	
30-VK-240-R	
FOR: HANSON STANDARD	REV. 6-14-19
VERT. AIR TANK	DATE: 3-9-99
SURFACE AREA = 62.3 SQ. FT.	
INSIDE: UNPAINTED	
OUTSIDE: PRIME	
CAD-"B" SIZE UNDER "STD"-SERIES	
BY: J.A.	SCALE: 1"=12"
ROY E. HANSON JR. MFG.	
LOS ANGELES, CA 90021	