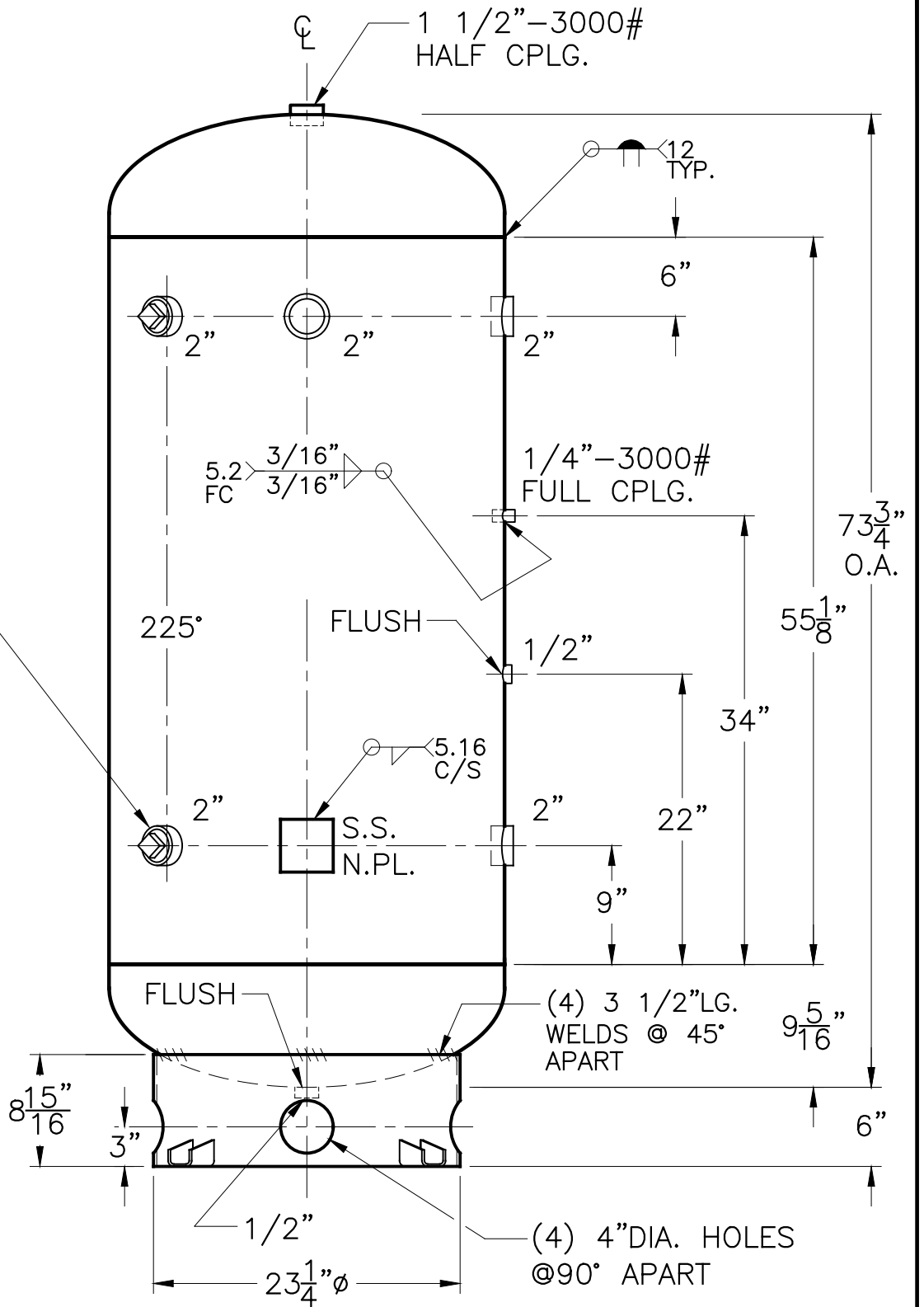


2" - 3000# H.C. W/STL. PLUG INSP. OPENING (2) PLC'S



NOTE: 1) HYDRO @ 520 PSIG. MIN.

SHELL / HEADS	
.338" SA-455 2:1 S.E. TRIM (.336" MIN.)	
M.A.W.P. 400 PSIG. @ 400 °F	
M.D.M.T. -20 °F @ 400 PSIG.	
ASME SECTION VIII DIV. 1, 2015	
X-RAY: RT-4 SPOT L.S. ONLY	
GALLONS: 200	WT. 795 LBS.
SERIAL NO.	
N.B.	

30-VJ-200-R	REV. 11-1-17
FOR: HANSON STANDARD	DATE: 3-24-99
VERT. AIR TANK	
SURFACE AREA = 52.0 SQ. FT.	
INSIDE: UNPAINTED	
OUTSIDE: PRIME	
CAD-"B" SIZE UNDER "STD"-SERIES	
BY: J.G.	SCALE: 1"=12"
<b>ROY E. HANSON JR. MFG.</b>	
LOS ANGELES, CA 90021	

