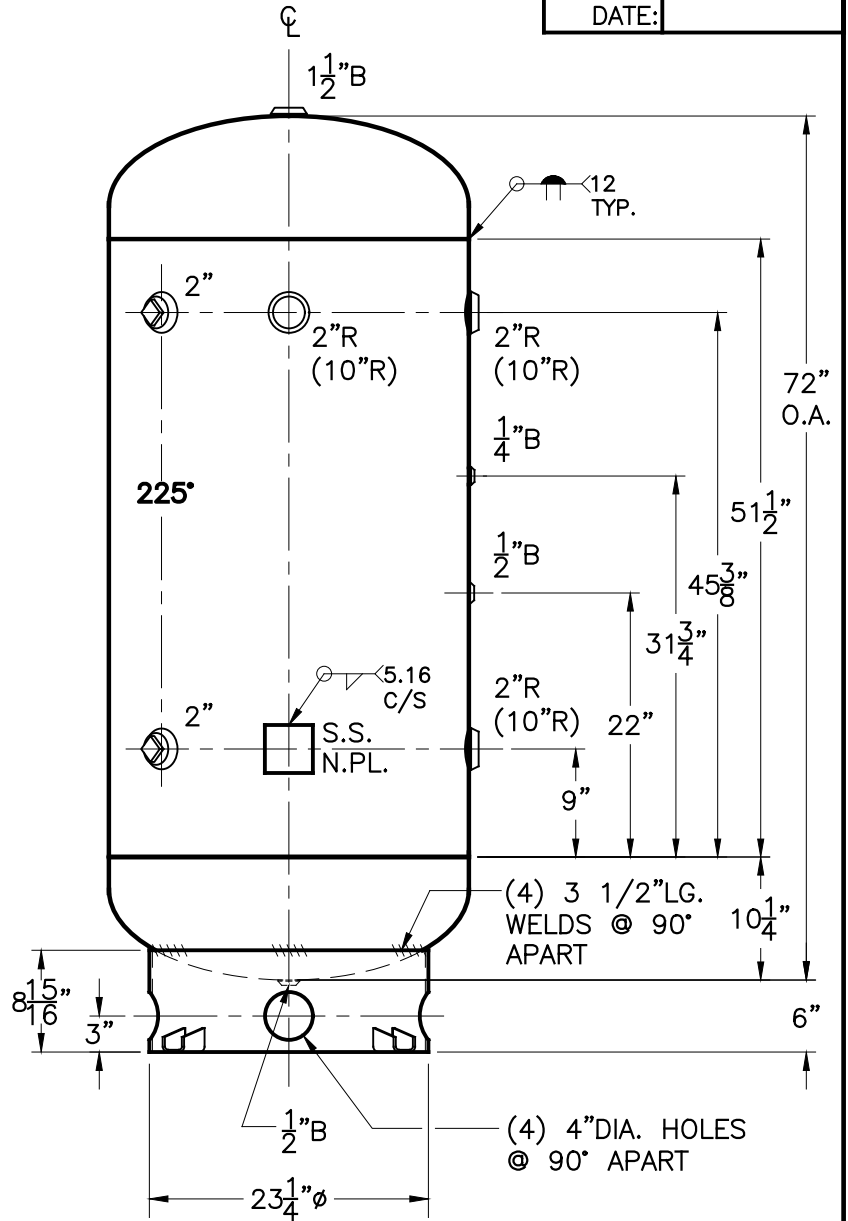
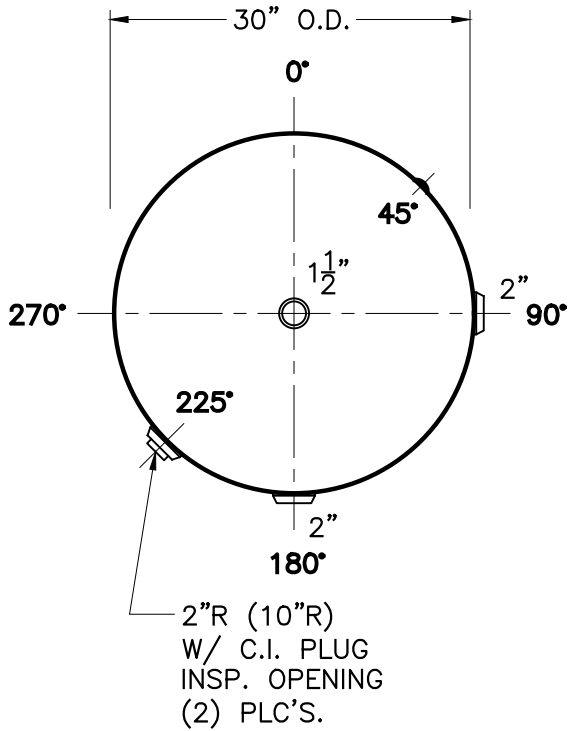
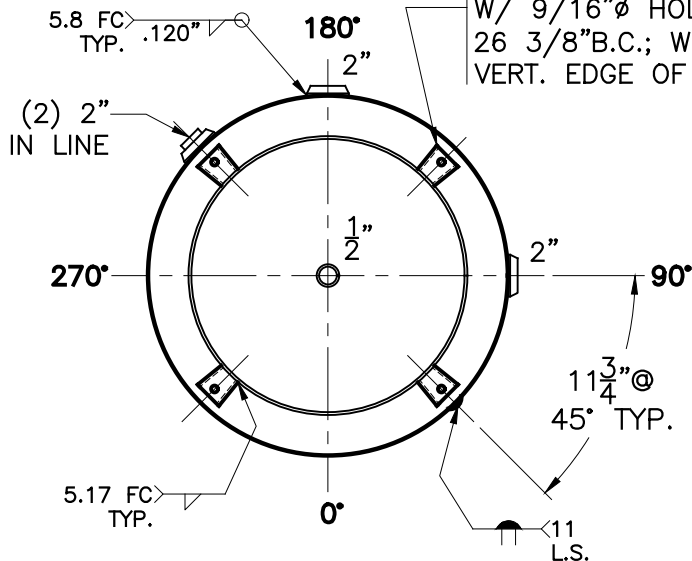


JOB No. _____
 DATE: _____



1/4" THK. CLIPS PER MA-395-B (4) PLC'S. W/ 9/16" ø HOLE ON 26 3/8" B.C.; WELD OUTSIDE VERT. EDGE OF CLIP ONLY



NOTE: 1) HYDRO @ 325 PSIG. MIN.

SHELL / HEADS		.252" SA-455 2:1 S.E.	
JOGGLE			
.250 SA-455			
M.A.W.P.	250 PSIG. @ 400 °F		
M.D.M.T.	-20 °F @ 250 PSIG.		
ASME. SECTION VIII DIV. 1, 2017			
X-RAY:	RT-NO		
GALLONS:	200	WT.	600 LBS.
SERIAL NO.			
N.B.			
30-VC-200-R		REV.	11-13-19
FOR: HANSON STANDARD		DATE:	11-24-86
VERT. AIR TANK		SURFACE AREA = 50.9 SQ. FT.	
INSIDE:	UNPAINTED		
OUTSIDE:	PRIME		
BY: J.G.	SCALE: 3/4"=12"		
ROY E. HANSON JR. MFG.			
LOS ANGELES, CA 90021			