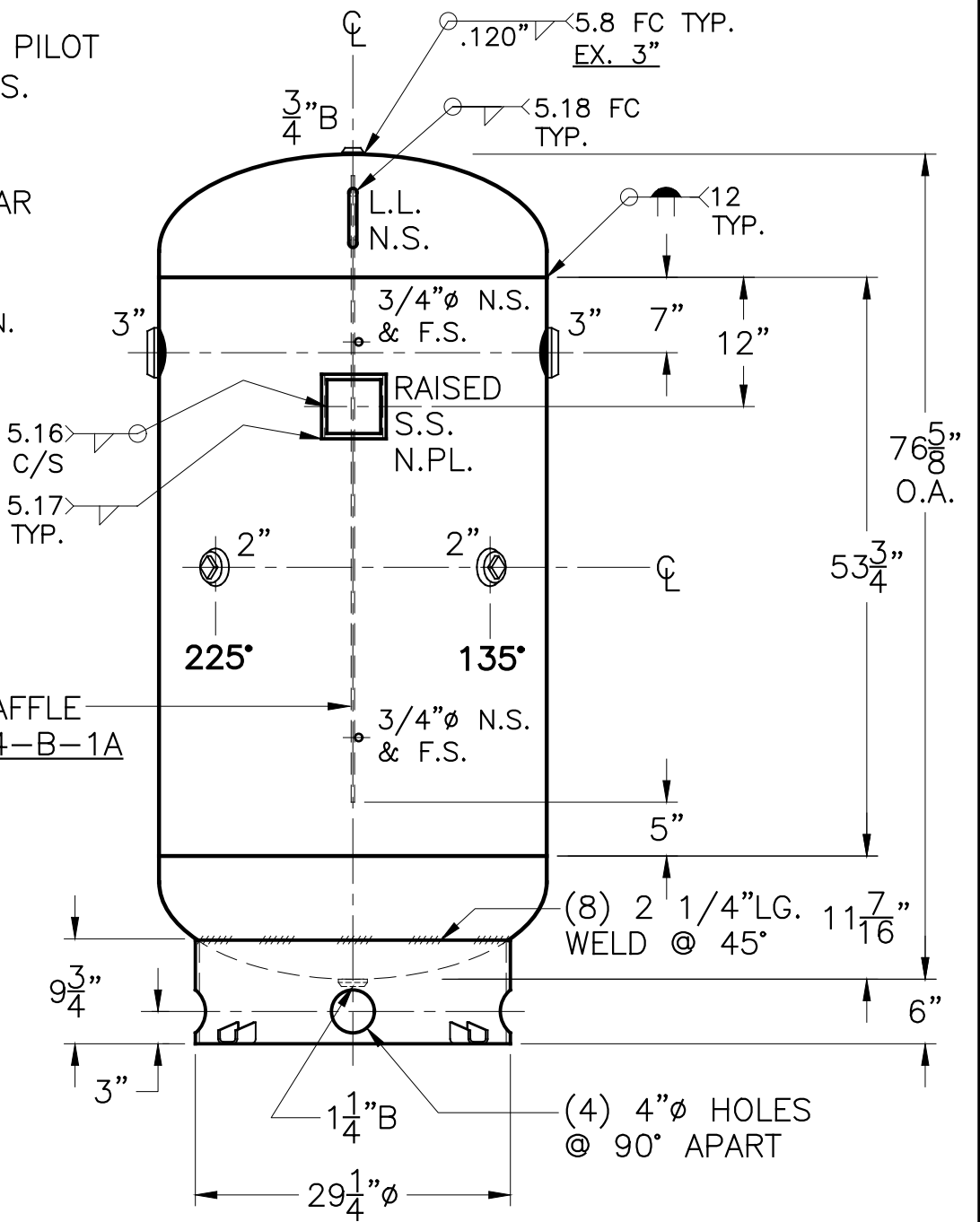
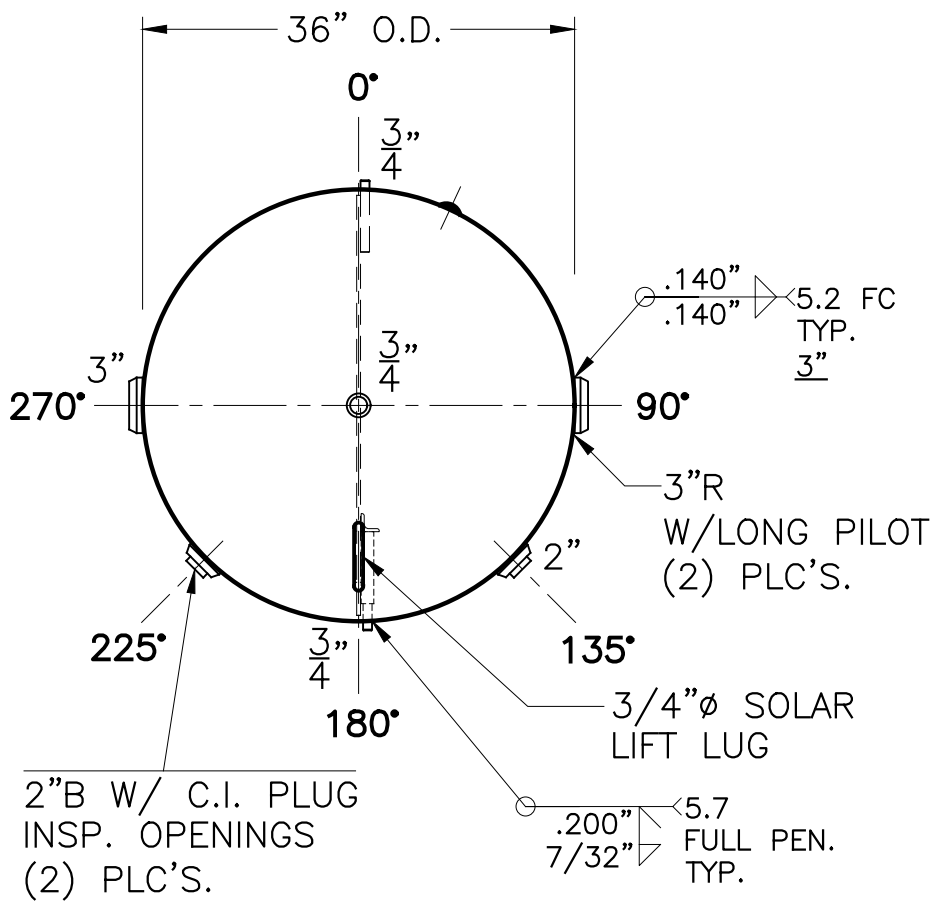
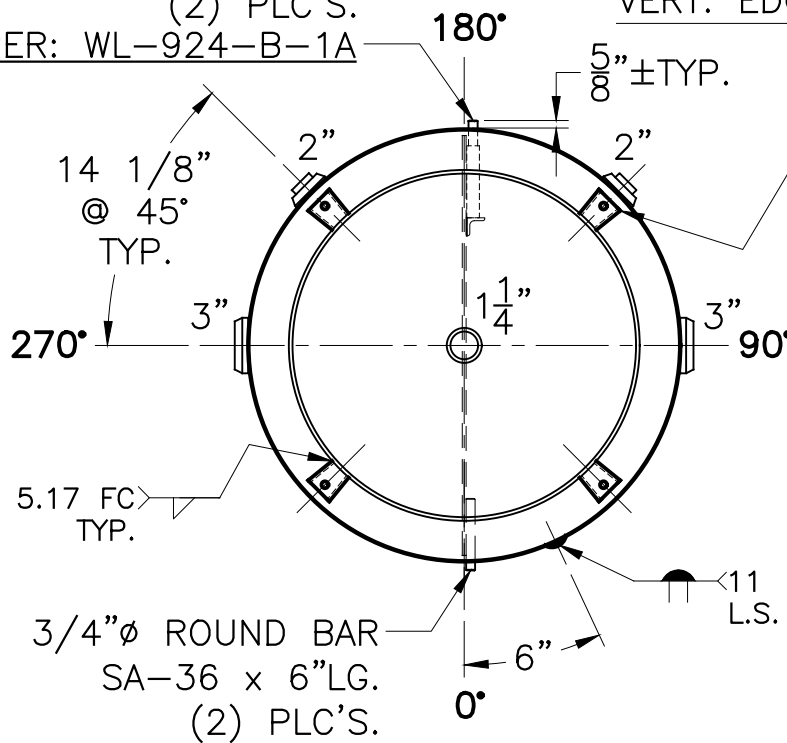


| DATE    | BY |
|---------|----|
| 3-22-16 | ES |
| 1-27-16 | JG |



1/4" THK. CLIPS PER MA-395-B (4) PLC'S. W/ 9/16" Ø HOLE ON 32 3/8" B.C.; WELD OUTSIDE VERT. EDGE OF CLIP ONLY



NOTE: 1) WELD 3/4" Ø ROUND BARS TO SHELL AFTER HEADS ARE IN PLACE.  
2) HYDRO @ 195 PSIG. MIN.

|                                |                    |                         |          |
|--------------------------------|--------------------|-------------------------|----------|
| SHELL / HEADS                  |                    | .189" SA-414-G 2:1 S.E. |          |
| JOGGLE                         |                    |                         |          |
| .200" SA-414-G (.181" MINIMUM) |                    |                         |          |
| M.A.W.P.                       | 150 PSIG. @ 200 °F |                         |          |
| M.D.M.T.                       | 0 °F @ 150 PSIG.   |                         |          |
| ASME SECTION VIII DIV. 1, 2015 |                    |                         |          |
| X-RAY:                         | RT-NO              |                         |          |
| GALLONS:                       | 300                | WT.                     | 855 LBS. |
| SERIAL NO.                     |                    |                         |          |
| N.B.                           |                    |                         |          |
| FOR: HANSON STANDARD           |                    | WL-924-B                |          |
| VERT. CHILLED WATER TANK       |                    | REV. 1-30-17            |          |
| SURFACE AREA = 65.0 SQ. FT.    |                    | DATE: 5-16-07           |          |
| INSIDE: UNPAINTED              |                    |                         |          |
| OUTSIDE: PRIME                 |                    |                         |          |
| BY: E.S.                       | SCALE: 3/4"=12"    |                         |          |
| ROY E. HANSON JR. MFG.         |                    |                         |          |
| LOS ANGELES, CA 90021          |                    |                         |          |