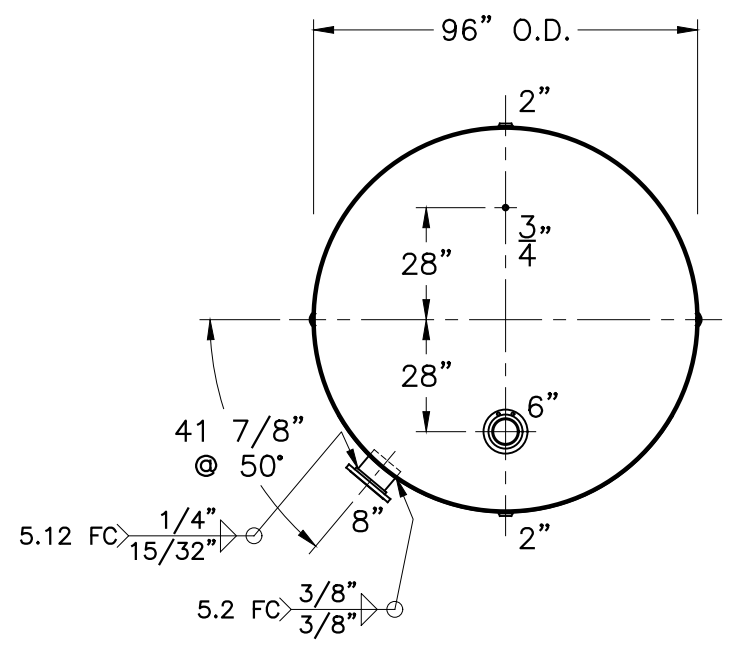
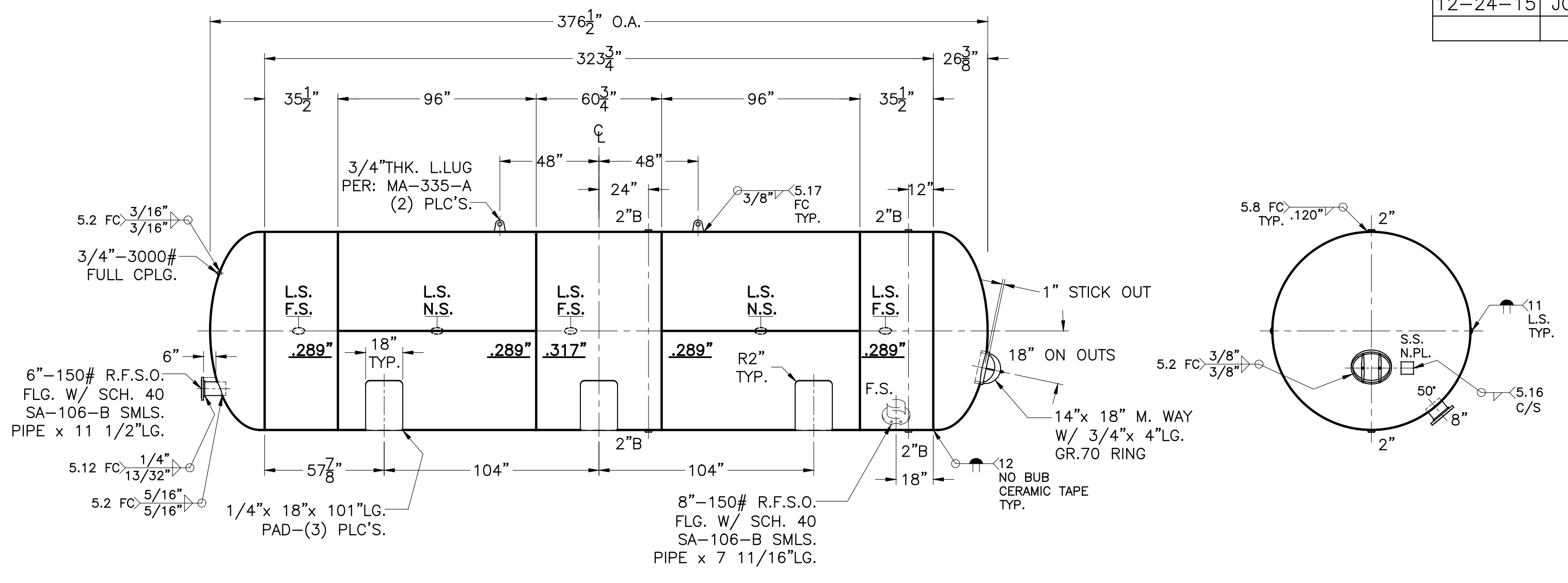


DATE	BY
12-24-15	JG



NOTE: 1) HYDRO @ 124 PSIG. MIN.

HEADS	.375" SA-516-70 2:1 S.E.
	(.358" MIN.)
SHELL	.289" SA-455
	.317" SA-455 @ CENTER
M.A.W.P.	95 PSIG. @ 180 °F
M.D.M.T.	-20 °F @ 95 PSIG.
ASME. SECTION VIII DIV. 1, 2015	
X-RAY: RT-4 SPOT .289" L.S. ONLY	
GALLONS:	11102
WT.	11,743 LBS.
SERIAL NO.	
N.B.	

<b>WO-804-B</b>	REV.
	DATE: 12-24-15
FOR:	
HORIZ. WATER/AIR TANK	
SURFACE AREA = 824.5 SQ. FT.	
UW-21(b)	
INSIDE: UNPAINTED	
OUTSIDE: PRIME	
BY: E.S. / B.C.	SCALE: 1/4"=12"
<b>ROY E. HANSON JR. MFG.</b>	
LOS ANGELES, CA 90021	