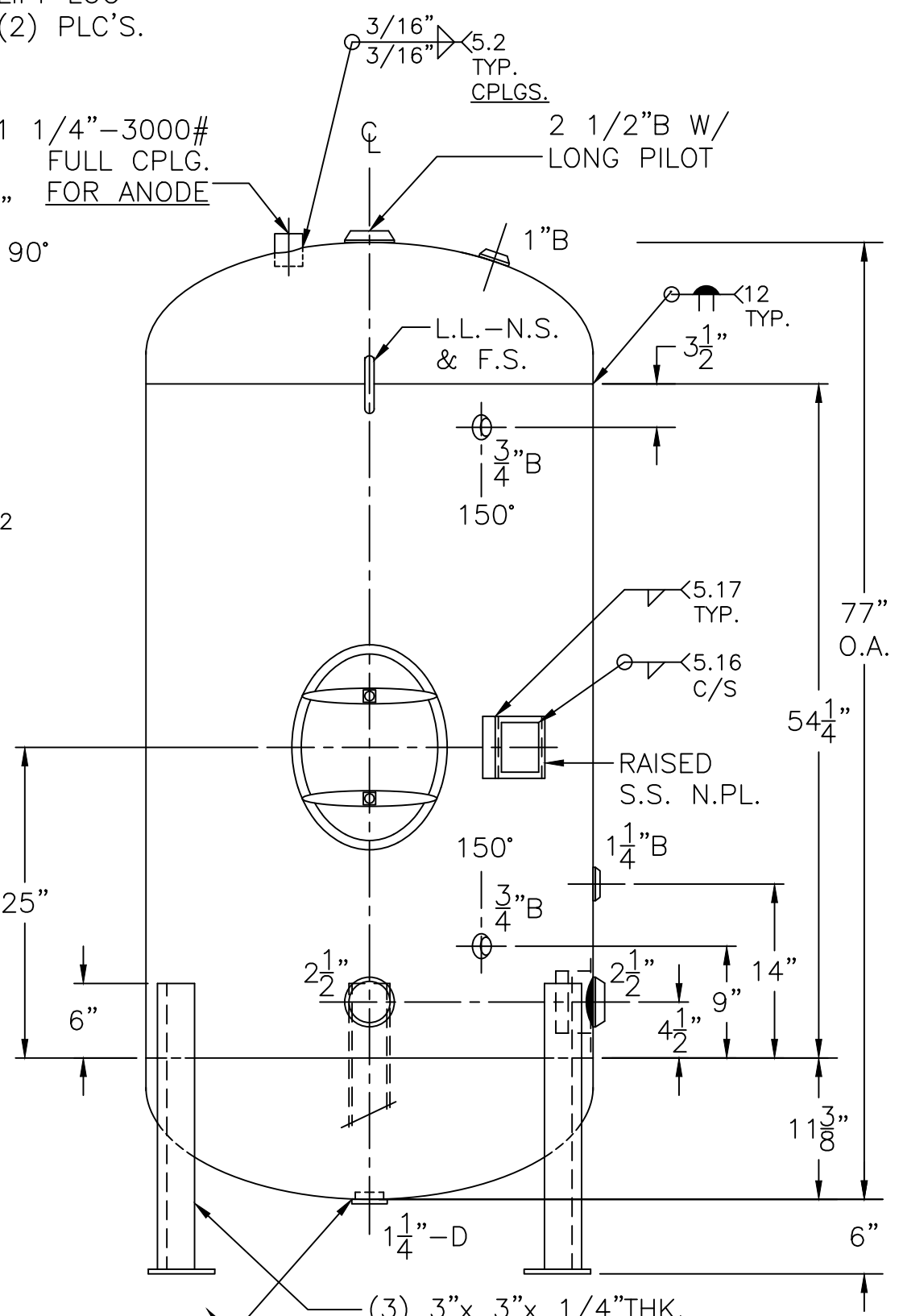
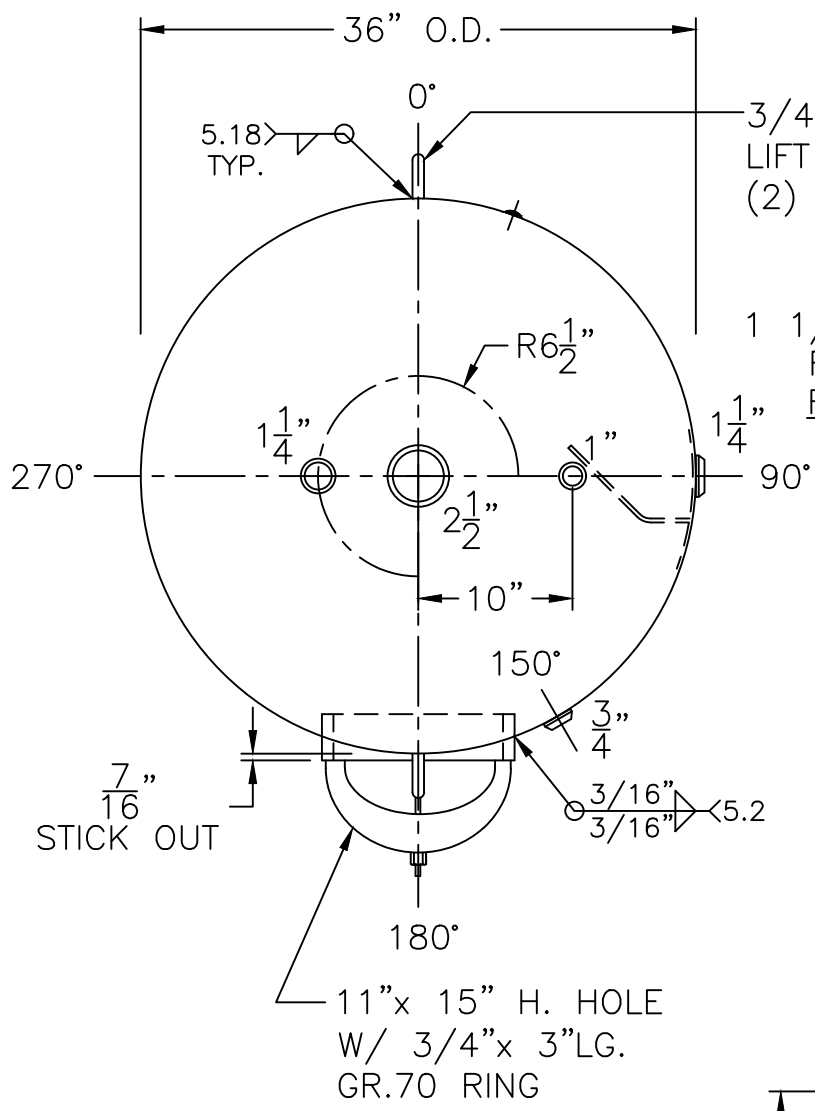
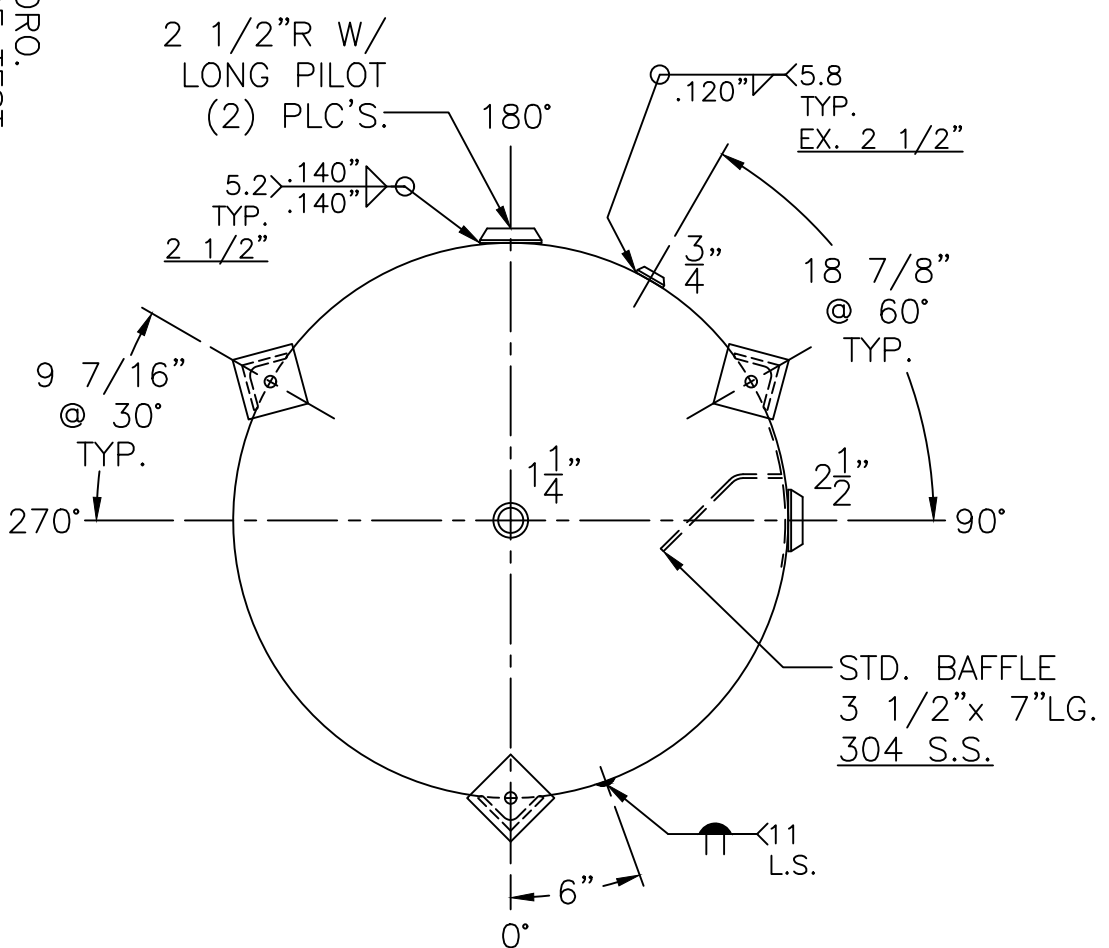


JOB No. \_\_\_\_\_  
DATE: \_\_\_\_\_



(3) 3"x 3"x 1/4" THK. x 23" LG. ANGLE LEGS  
(3) 4"x 4"x 3/8" THK. PAD W/ 7/8"  $\phi$  HOLE



NOTE: 1) SHIP LOOSE W/ (1) 1 5/16"x 60" LG. FLEX. MAG. ANODE.	2) 4-1-04 PROOF TEST.	3) 240 PSIG. HYDRO.
SHELL / HEADS		
.189" SA-414-G 2:1 S.E.		
JOGGLE		
.165" SA-414-G		
M.A.W.P. 160 PSIG. @ 210 °F		
ASME SECTION IV 2017		
X-RAY: RT-NO / H.L.W.		
GALLONS: 305	WT. 613 LBS.	
SERIAL NO.		
N.B.		

FOR: HANSON STANDARD	REV: 6-10-19
VERT. WATER TANK	DATE: 5-30-90
SURFACE AREA = 65.2 SQ. FT.	
INSIDE: GLASS LINED	
OUTSIDE: PRIME	
SF: 1.5	LEG-ZONE 4-15 KM.
CAD "B" SIZE UNDER STD. SERIES	
BY: J.A.	SCALE: 1" = 12"
<b>ROY E. HANSON JR. MFG.</b>	
LOS ANGELES, CA 90021	