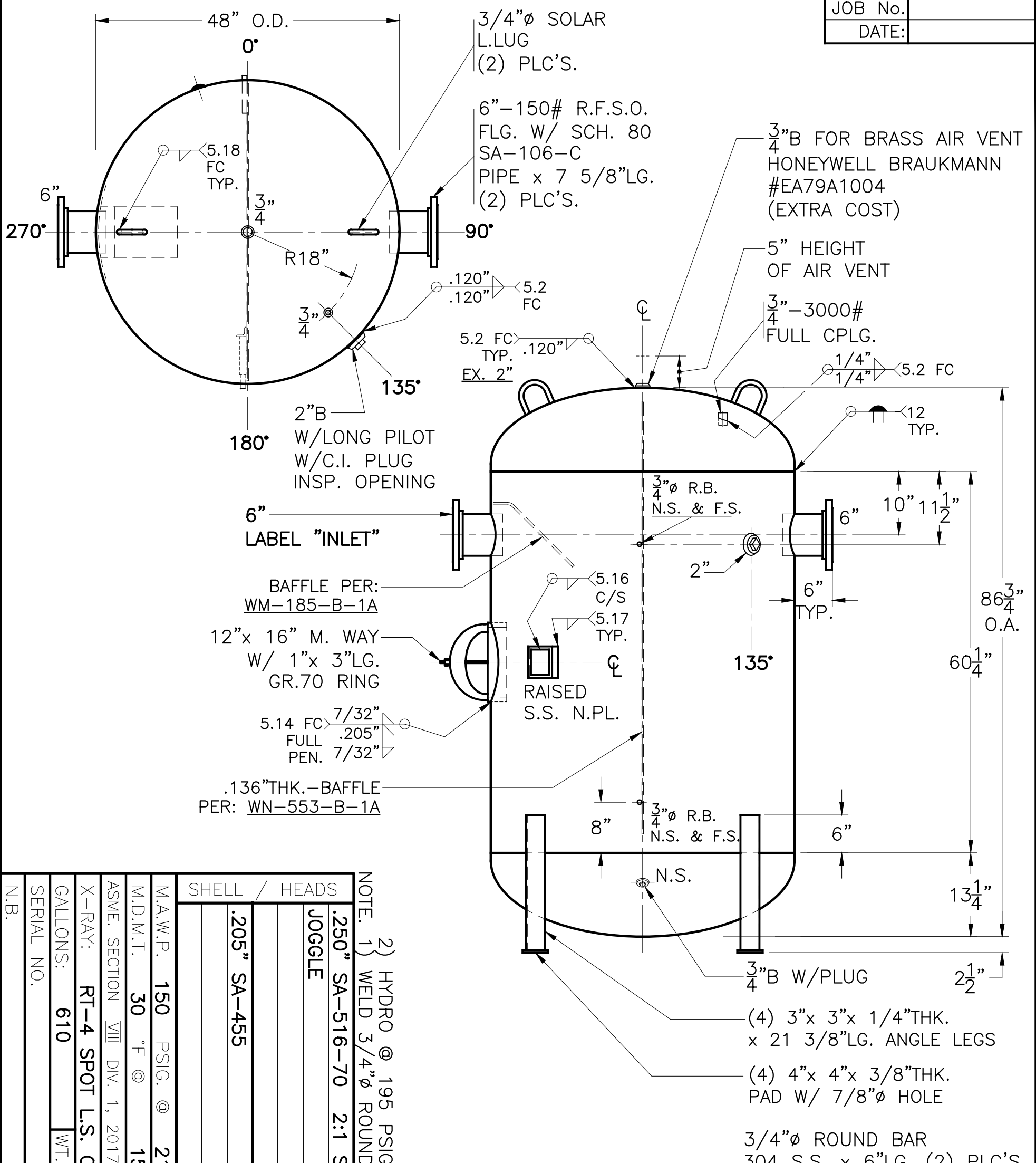


JOB No. _____
DATE: _____



SHELL / HEADS	
JOGGLE	.250" SA-516-70 2:1 S.E.
	.205" SA-455
M.A.W.P.	150 PSIG. @ 212 °F
M.D.M.T.	30 °F @ 150 PSIG.
ASME SECTION	VIII DIV. 1, 2017
X-RAY:	RT-4 SPOT L.S. ONLY
GALLONS:	610 WT. 1362 LBS.
SERIAL NO.	
N.B.	

NOTE. 1) WELD 3/4" ϕ ROUND BARS TO SHELL AFTER HEADS ARE IN PLACE

2) HYDRO @ 195 PSIG. MIN.

FOR: HANSON BUFFER TANK	B-610-48	REV. 6-5-19
SURFACE AREA = 100.7 SQ. FT.	DATE: 6-15-12	
INSIDE: UNPAINTED		
OUTSIDE: PRIME		
LEG-ZONE 4-15 KM.	SCALE: 3/4"=12"	
BY: J.A.		
ROY E. HANSON JR. MFG.		
LOS ANGELES, CA 90021		