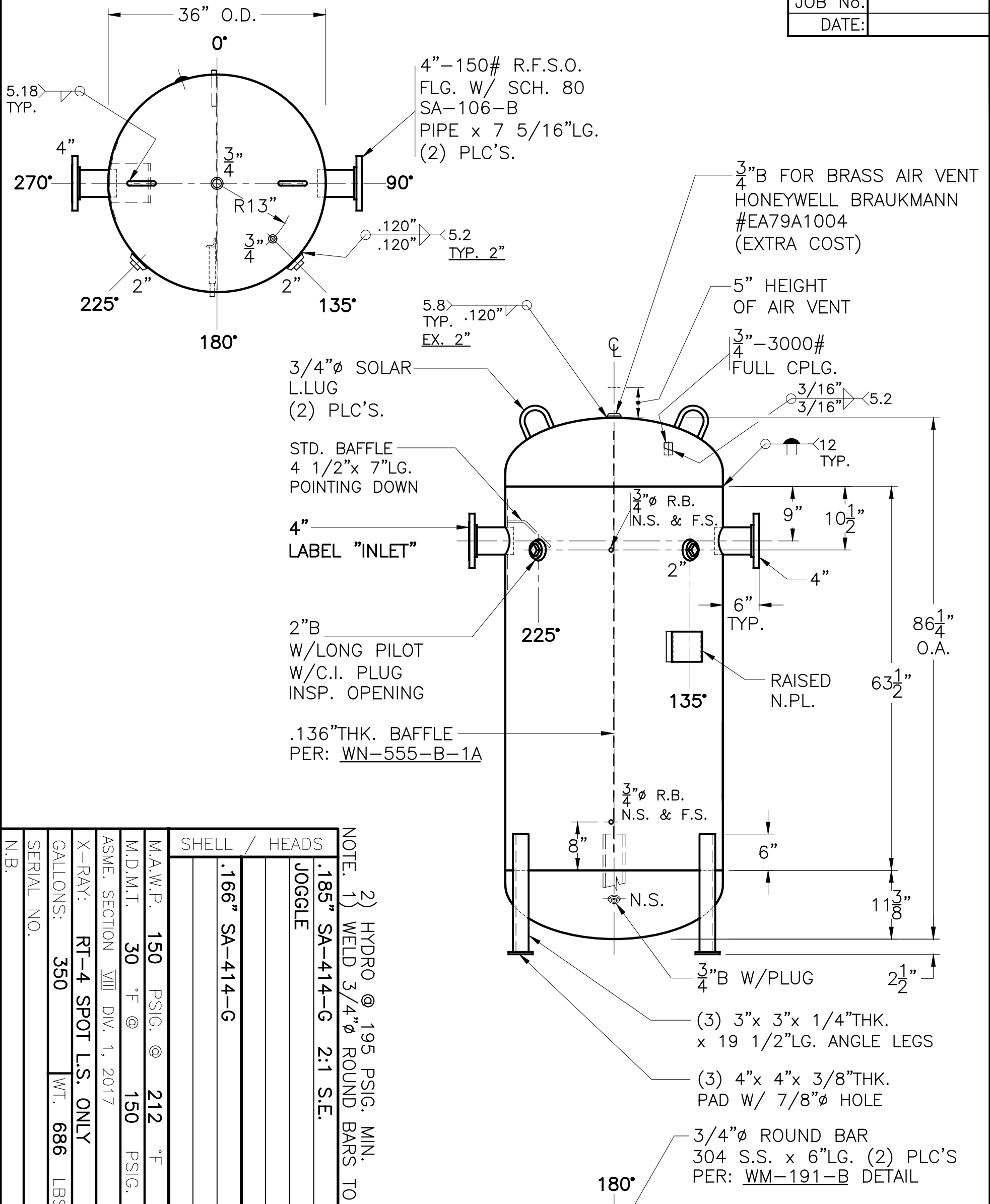


JOB No. _____
 DATE: _____



SHELL / HEADS	
JOGGLE	.185" SA-414-G 2:1 S.E.
	.166" SA-414-G
M.A.W.P.	150 PSIG. @ 212 °F
M.D.M.T.	30 °F @ 150 PSIG.
ASME SECTION	VIII DIV. 1, 2017
X-RAY:	RT-4 SPOT L.S. ONLY
GALLONS:	350 WT. 686 LBS.
SERIAL NO.	
N.B.	

NOTE. 1) WELD 3/4" Ø ROUND BARS TO SHELL AFTER HEADS ARE IN PLACE
 2) HYDRO @ 195 PSIG. MIN.

FOR: HANSON BUFFER TANK	B-350-36	REV. 6-6-19
		DATE: 6-15-12
SURFACE AREA = 73.1 SQ. FT.		
INSIDE: UNPAINTED	UW-21 (b)	
OUTSIDE: PRIME		
LEG-ZONE 4-15 KM.		
BY: J.A.	SCALE: 3/4"=12"	
ROY E. HANSON JR. MFG.		
LOS ANGELES, CA 90021		