

2" B W/ C.I. PLUG FOR INSPECTION OPENINGS (2) PLC'S.

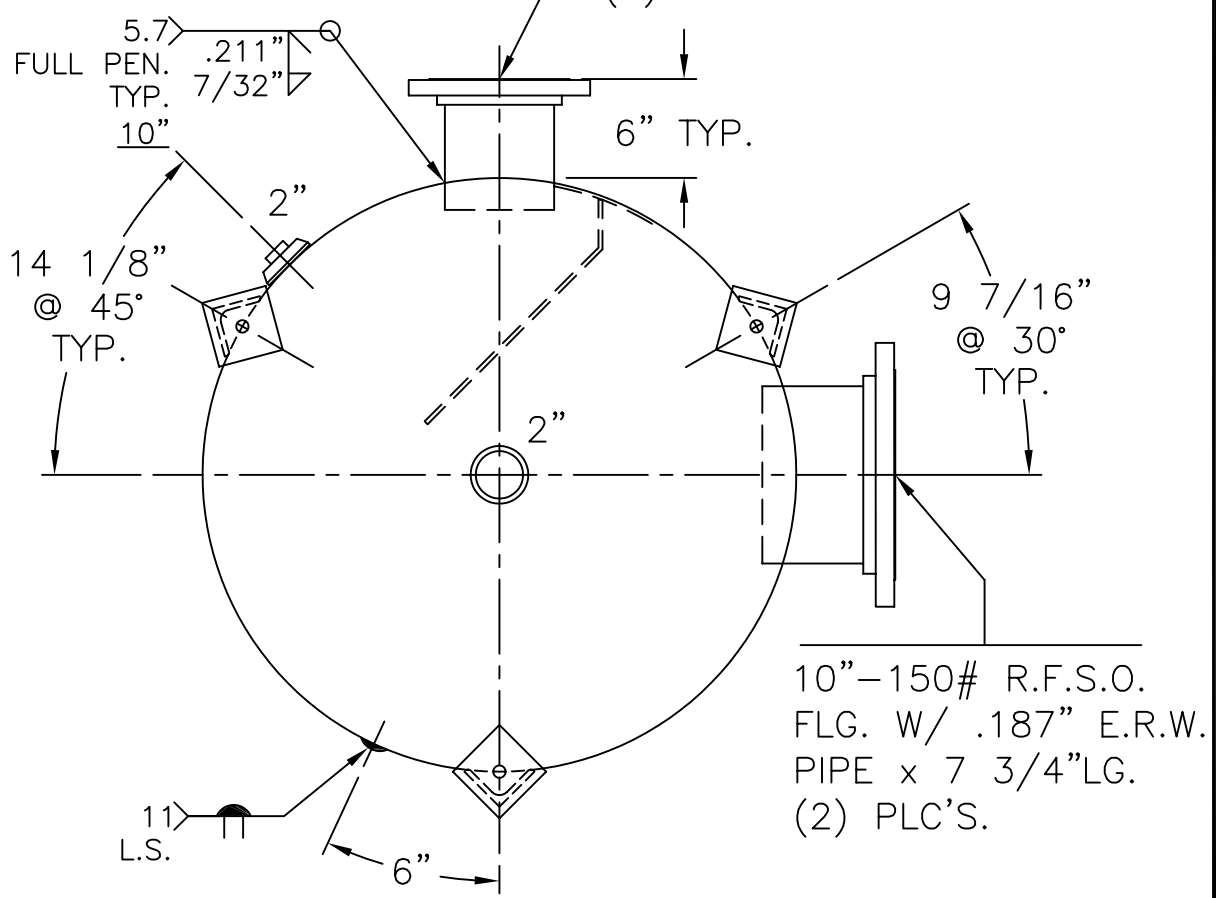
1/4" THK. BAFFLE PER: WI-297-B-1A (2) PLC'S.

(3) 2 1/2" x 2 1/2" x 3/16" THK. x 23 3/4" LG. ANGLE LEGS

(3) 4" x 4" x 1/4" THK. PAD W/ 3/4" Ø HOLE FOR 1/2" Ø x 8" LG. BOLTS GRADE 5 OR BETTER 6" EMBEDMENT

6"-150# R.F.S.O. FLG. W/ SCH. 40 PIPE x 7 5/8" LG. (2) PLC'S.

10"-150# R.F.S.O. FLG. W/ .187" E.R.W. PIPE x 7 3/4" LG. (2) PLC'S.



NOTE: 1) HYDRO @ 197 PSIG. MIN.
 2) WELDS TO, OR JOINING SA-612 HAVE W.P.S. W/ SUFFIX "B".
 3) INSTALL 6" & 10" NOZZLES AFTER G.S. ARE WELDED.

SHELL / HEADS		.182" SA-455 2:1 S.E.	
JOGGLE - .209" OFFSET			
.211" SA-612			
M.A.W.P.	150 PSIG. @ 200 °F		
M.D.M.T.	-20 °F @ 150 PSIG.		
ASME SECTION VIII	DIV. 1, 2007 ADD 2007		
X-RAY:	RT-NO		
GALLONS:	300	WT.	787 LBS.
SERIAL NO.			
N.B.			
FOR: -		WM-285-B	
VERT. HOT WATER/BUFFER TANK		REV:	5-1-08
INSIDE: UNPAINTED		DATE:	4-22-08
OUTSIDE: SHOP PRIMER			
LEG-ZONE 1-15 KM.			
BY: E.S. / C.J. SCALE: 1" = 12"			
ROY E. HANSON JR. MFG.			
1600 E. WASHINGTON BLVD.			
LOS ANGELES, CA 90021			